



WEBER-MORGAN

HEALTH DEPARTMENT

ANNUAL REPORT 2017

LETTER FROM THE DIRECTOR

It's my pleasure to bring you this 2017 Annual Report, featuring highlights of the work performed by our staff to help our community to have a healthy place to work and live.

Weber-Morgan Health Department is in the second year of implementing our Community Health Improvement Plan to reduce obesity, teen substance abuse and suicide. This plan has enabled the health department to take an active role in such community-wide initiatives as OgdenCAN and IGP. Working in tandem with our community partners, we are putting in the groundwork to make changes that can bring about long lasting improved health in our community and in the lives of our residents.

Thank you to our board, staff and community partners for their support and guidance and collaboration in these efforts that often come in addition to our day-to-day activities of promotion, protection and prevention that you'll also read about in the following pages.

Brian Bennett



CHIP IN ACTION

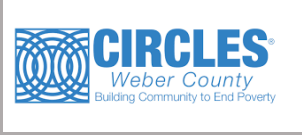
COMMUNITY HEALTH
IMPROVEMENT PLAN

OgdenCAN

INTERGENERATIONAL
POVERTY

OTHER COMMUNITY
COALITIONS

Ogden CAN Subcommittee Partners



- Area Residents
- Circles Weber County
- Get Healthy Utah
- Intermountain McKay-Dee Hospital
- Midtown Community Health Center
- Ogden City
- Ogden Regional Medical Center
- Ogden-Weber Community Action Partnership (OWCAP)
- USU Extension
- Weber-Morgan Health Department
- Weber Human Services
- Weber State University
- YMCA of Northern Utah

Aligning Community Health Priorities



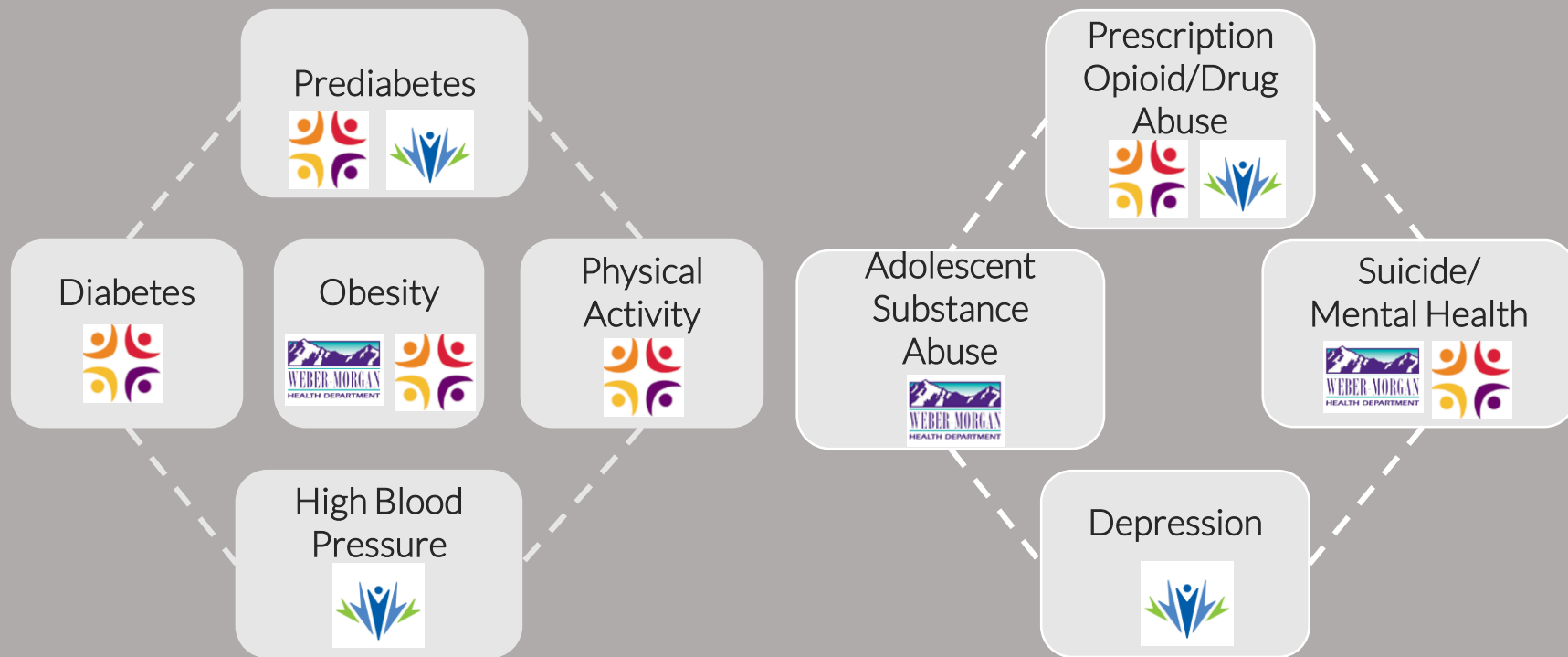
Weber-Morgan Health



McKay-Dee Hospital



Utah Health Department



FIRST BOOK PROGRAM

“PROMOTING LITERACY BY GETTING BOOKS INTO THE HANDS OF OUR YOUNGEST CLIENTS”

- Books purchased at low or no cost [firstbooks.com](https://www.firstbooks.com), a non-profit that works to get books into homes of disadvantaged populations.
- Popular, age-appropriate books are given to children receiving routine childhood immunizations and home visits, from baby to adolescent.
- Immunization nurse writes name of child and date given on a WMHD label inside the front cover of the book.



TARGETED CASE MANAGEMENT HOME VISITING PROGRAM

A YEAR OF TRANSITION & CHANGE

- Weber-Morgan's Targeted Case Management (TCM) program has been expanded from one home-visiting nurse to three home-visiting nurses.
- Medicaid-eligible children from 0-4 years old can receive a home visit from a trained RN to assess the child's growth and development, answer questions, give community resources and referrals, and ensure that the family has access to a medical home.
- Increased activities, including: flyers, letters, incentives, technological improvements using tablets to download information and decrease use of paper and save time, adding text messaging capabilities, and organizing a 'WMHD TCM Guide' for reference and training purposes.



INFLUENZA

- Visited all Weber and Ogden elementary schools.
- New in 2017, 12 junior high schools in Weber and Ogden school districts were added to the schedule.
- Total of 54 schools were reached providing not only influenza, but TDaP, varicella, and meningococcal.
- Influenza vaccinations were also offered to the community with a 'drive-by' clinic held in the Weber-Morgan Health Department parking lot. A great way for those who have a hard time getting in and out of the car to get their shot in the convenience of their very own vehicle!
- Influenza, and all other routine and travel immunizations, given in the Clinical Nursing Division of the health department.



WMHD Top 10 Reported Diseases*

	2017	2016	2015	2014	2013
1. Chlamydia Trachomatis Infection	888	873	790	693	789
2. Gonorrhea	262	212	144	121	90
3. Hepatitis C Virus Infection, Chronic	246	250	260	317	246
4. Influenza Activity	232	125	47	66	183
5. Influenza-Associated Hospitalization	147	141	84	94	113
6. Tuberculosis, Latent Infection	134	137	89	95	105
7. Syphilis, all stages*	84	59	46	52	28
8. Chickenpox (Varicella)	63	51	42	61	69
9. Pertussis	58	30	72	217	76
10. Campylobacteriosis	51	32	27	84	72

*5-year comparison using 2016 rankings. Confirmed cases may vary.

WMHD Top 10 Confirmed Diseases

	Disease	Reported	Actual
1.	Chlamydia Trachomatis Infection	888	887
2.	Gonorrhea	262	261
3.	Hepatitis C Virus Infection, Chronic	246	179
4.	Influenza Activity	232	230
5.	Influenza-Associated Hospitalization	147	147
6.	Tuberculosis, Latent Infection	134	103
7.	Syphilis, all stages*	84	18
8.	Chickenpox (Varicella)	63	19
9.	Pertussis	58	40
10.	Campylobacteriosis	51	49

WIC OUTREACH

Informing the community about WIC with outreach flyers and our new pass along cards.

Your child has you, and you have WIC

- Nutrition Counseling
- Healthy Eating
- Prenatal Nutrition
- Health Assessment
- Breastfeeding Support
- Healthy Foods

Effective July 1, 2017 - June 30, 2018

Household Size	Monthly (Gross)	Yearly (Gross)
1	\$1,860	\$22,311
2	\$2,504	\$30,044
3	\$3,148	\$37,777
4	\$3,793	\$45,510
5	\$4,437	\$53,243
6	\$5,082	\$60,976
7	\$5,726	\$68,709
8	\$6,371	\$76,442

Dietary Guideline Recommendations	WIC Foods
Fruits and Vegetables	Fresh fruits and vegetables; baby foods; and juice
Whole grains	Whole wheat bread and pasta, whole wheat or corn tortillas, brown rice, whole grain cereals
Fat free and low fat dairy products	Fat free and low fat milk and yogurt; infant formula
Protein	Tuna fish; salmon; beans; peanut butter; and eggs



*Note: If you are pregnant, you may count your unborn child in your family size.



Medical Providers

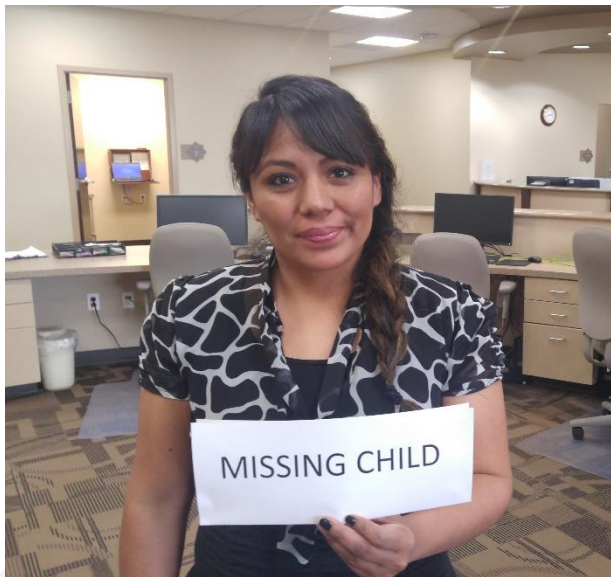
Visited OBGYN, Family Practice, and Pediatric medical offices to build relationships, bring outreach materials, and encourage referrals

Safe Kids Day/ Weber State Football Games

Taught families about healthy eating

Refer a Friend Program

Families participating in WIC can now receive a pack of diapers for every friend they refer that qualifies for WIC



MISSING CHILD DRILLS

The most common emergency we face at WIC is a child getting separated from their family

In 2017 we reviewed, practiced and updated our missing child procedures.

We started having practice drills so that we can efficiently find lost children and identify quickly if we need to include the police department in the search.

BREASTFEEDING LOUNGE

WIC has sponsored a breastfeeding Lounge at the Weber County Fair since 2014

In 2017 we arranged for furniture from Rent A Center in exchange for advertising to create a nice comfortable place for moms to feed their infants along with some entertainment for their other children while they waited.



SUICIDE PREVENTION

In 2017, WMHD, in collaboration with community partners, held the following events:

- In partnership with Ogden School District, NUHOPE, and Weber Human Services, the first Annual HOPE Art Contest was held. 125 students submitted artwork depicting what brings them hope.
- 25 suicide prevention trainings including QPR, SafeTALK, and ASIST.
- Nearly 600 community members were trained in suicide prevention.



SEXUAL VIOLENCE PREVENTION

New Upstanding Sexual Violence Prevention Program trains and prepares individuals with the skills and knowledge to understand violence prevention and teach basic skills within their communities and lives.

Goals of Upstanding:

- Increase knowledge of definitions and education of violence and harm in their communities
- Learn skills and techniques for violence prevention and intervention
- Develop and practice intervention skills
- Increase efficacy to intervene in some way

HOW CAN I HELP PREVENT SEXUAL VIOLENCE?

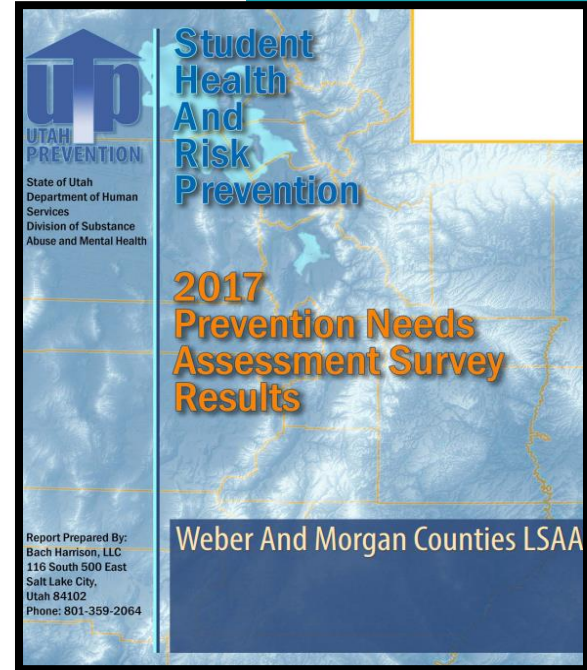
UPSTANDING TIP #1:
Anyone can be an **Upstander!** An **Upstander** steps in when they see someone being harmed or see the potential for harm.



SHARP SURVEY

Collaborated with community partners to implement the Student Health and Risk Prevention Survey (SHARP) in the Morgan School District for the first time since 2011.

- 544 students in the Morgan School District participated in the biennial survey.
- Data help community's understand trends in the risk and protective factors that impact the health of youth. With this information, community's can make informed decisions about what their community needs best.



FARM-TO-PRESCHOOL

WMHD provided grant funding and training on how to incorporate Farm-to-Preschool at daycare centers in Weber County. Three childcare centers participated providing 378 children with hands-on education.



HARMFUL ALGAE BLOOMS

In 2017, Harmful Algal Blooms were reported in 10 water bodies in Utah, including Ogden's 21st Street Pond

- Harmful Algal Blooms can be caused by high nutrients, warm water temperatures, abundant sunlight and stagnant or slow-moving water.
- Toxins in the blooms can be harmful to people, pets, livestock and wildlife.
- Weber-Morgan Health Department established a program to monitor, assess and respond should another bloom occur. Inform the public of possible health risks in a timely way.
- We work fast to inform the public of health risks.



AIR QUALITY

The Weber-Morgan Board of Health added diesel powered vehicles to the I/M program in September of 2016, with an implementation date of January 1, 2017.



I/M TECHNICIAN TRAINING

Staff trained 350 technicians in 12 classes before implementation date.



WAIVERS

Implementation plans allowed 1-year waivers for vehicles that failed.. Issued 198 waivers.



FIRST YEAR RESULTS

Total Tests – 10,727 (7% of total fleet)

Diesel Failure Rate – 1,999 (19% failure rate)

Tampered Diesels – 801 (7.5% of diesel vehicles)

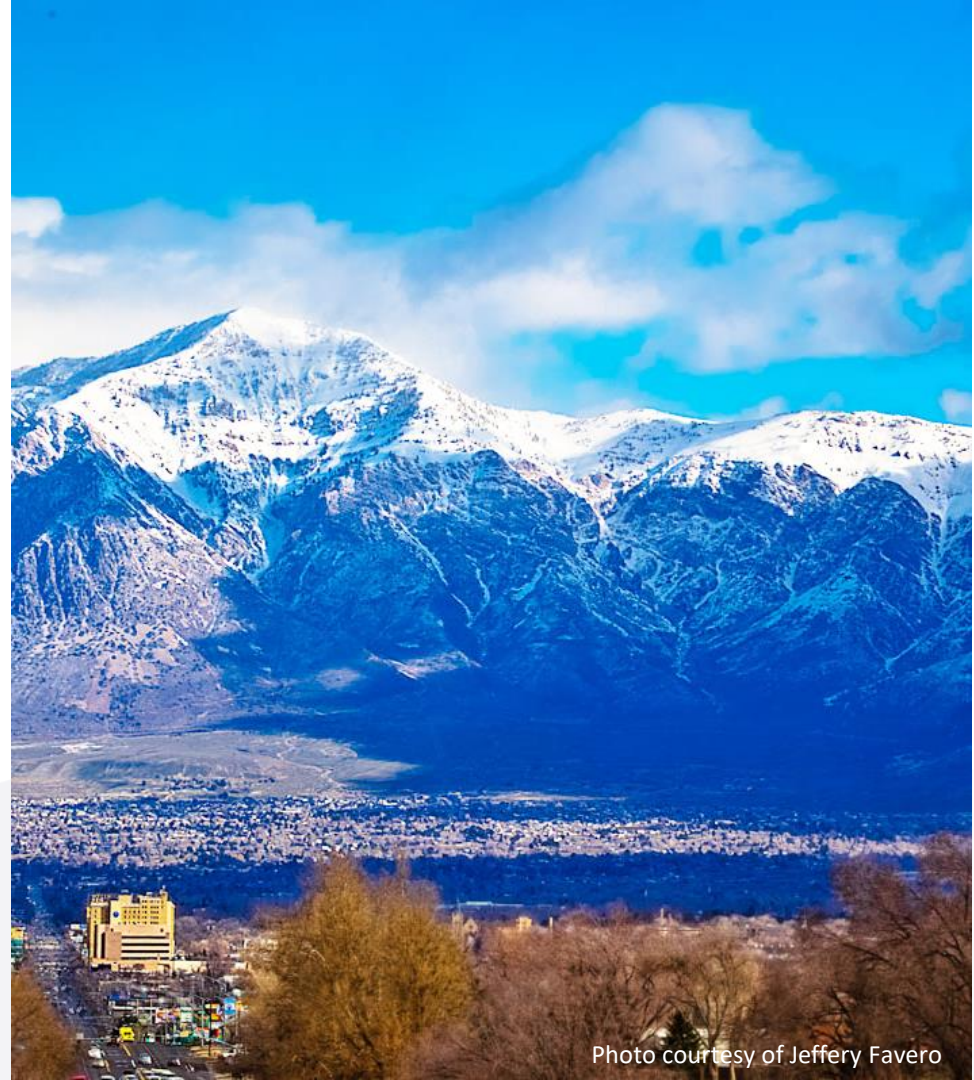


Photo courtesy of Jeffery Favero

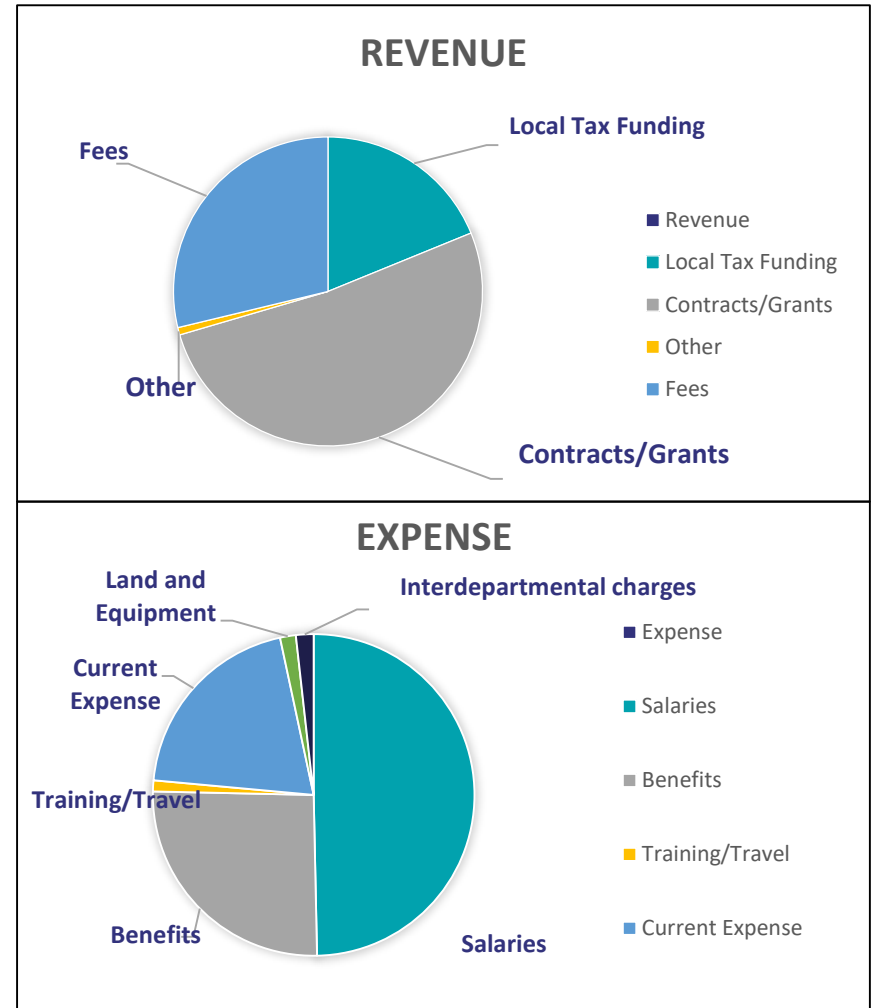
2017 Budget

Revenue

Local Tax Funding	\$1,487,715
Contracts/Grants	\$4,078,650
Other	\$61,334
Fees	\$2,271,987
Total Revenue	\$7,899,686

Expense

Salaries	\$4,046,203
Benefits	\$2,091,886
Training/Travel	\$90,420
Current Expense	\$1,644,812
Land and Equipment	\$129,039
Interdepartmental charges	\$144,314
Total Expense	\$8,146,674
Use of Fund Balance	-\$246,987
Beginning Fund Balance	\$3,756,760
Ending Fund Balance	\$3,509,773



WMHD STATISTICS

ENVIRONMENTAL HEALTH DIVISION

Food Service Plans Submitted for Review	63
Food Service Permits Issues	84
Food Service Inspections	1,968
Temporary Food Inspections	971
Temporary Mass Gatherings	37
Food Service Enforcement Actions	8
Food Safety Managers Certified	209
Food Handlers Trained and/or Permitted	9,214
Food Borne Illness Complaints	37
School and Playground Inspections	87
Underground Storage Tank Inspections	85
Public Water Samples and Inspections	419
Motor Vehicle Emissions – Station Audits	669
Waste Oil Facility Inspections	63
Emergency Response Call-Outs	29
All Other Nuisance Complaint Inspections	327
Daycare Food Service Inspections	99
Public Pools and Spas Inspections	138
Public Pools Water Samples Taken	927
Wastewater Permits Issue	167
Wastewater Soil Excavations	120
Wastewater System Failures	20
New Wastewater Systems	103
Meth Contamination Properties	50

WOMEN, INFANTS, AND CHILDREN DIVISION

(Quarterly Averages)	
Certified Participants	6,192
Number of Women Who Initiated Breastfeeding	1,040
Number of Women Who Are Breastfeeding	471
Classes Taught	112
Amount of Food Dollars Provided	3,400,000
Total Food Dollars Used for 2017	3,280,151

NURSING AND CLINICAL SERVICES DIVISION

Family Planning Visits	26
Baby Your Baby	150
TCM Home Visits	402
Home Visit Program Ages 0-5	332
NFP Visits	814
Immunizations: Ages 0-2	605
Ages 3-6	1,346
Ages 7-18	3,536
Adult	4,457
STD Visits	311
HIV Testing	103
TB Testing	1,230
# of new active cases	0
Communicable Disease Investigations	2,403
Cancer Screening Exams	340
Immigration Physical Exams	68
Flu Vaccination School Clinics	3,037
Non-Flu Vaccination School Clinics	481

ADMINISTRATIVE SERVICES DIVISION

Vital Statistics	
Birth Certificates	8,840
Stillbirth Certificates	8
Death Certificates	2,654
Marriage/Divorce Certificates	40
Additional/Multiple Copies	14,697
Reissues	1,330
Affidavits	136
Expedites	58

HEALTH PROMOTION DIVISION

Injury Prevention	
Car Seat Program Participants	177
Seat Belt Program Participants	2,800
Other Injury Prevention Participants	5,294
Falls Injury Prevention Participants	66
Number of Suicide Training/Presentations	25
Community Members Trained in Suicide Prevention	598
Participants in Other Outreach Programs	2,256
Tobacco Programs	
Students/Community Members Reached	7,139
END Participants	16
Cessation to WIC, providers, physicians, etc.	67
Retailers Trained/Educated	155
Compliance Checks Conducted	568
Teen Health	
Abstinence Education Participants	3,818
Number of Education Partners (Teachers)	99
Personal Responsibility Education Program Participants	419
Sexual Violence Prevention Program Participants	89
Number of Community Partners (Agencies)	17
Healthy Living	
Number of Students Reached	27,971
Healthy Childcare (TOPStar) Children Reached	2,021
Healthy Childcare (TOPStar) Childcare Providers Trained	89
Worksites that Complete a Health Risk Appraisal	2
Worksites that develop or strengthen a Breastfeeding Policy	1
Number of New Community Partnerships (Clinical and Community)	24
Number of Clinics Engaged in Quality Improvement Protocols	6