

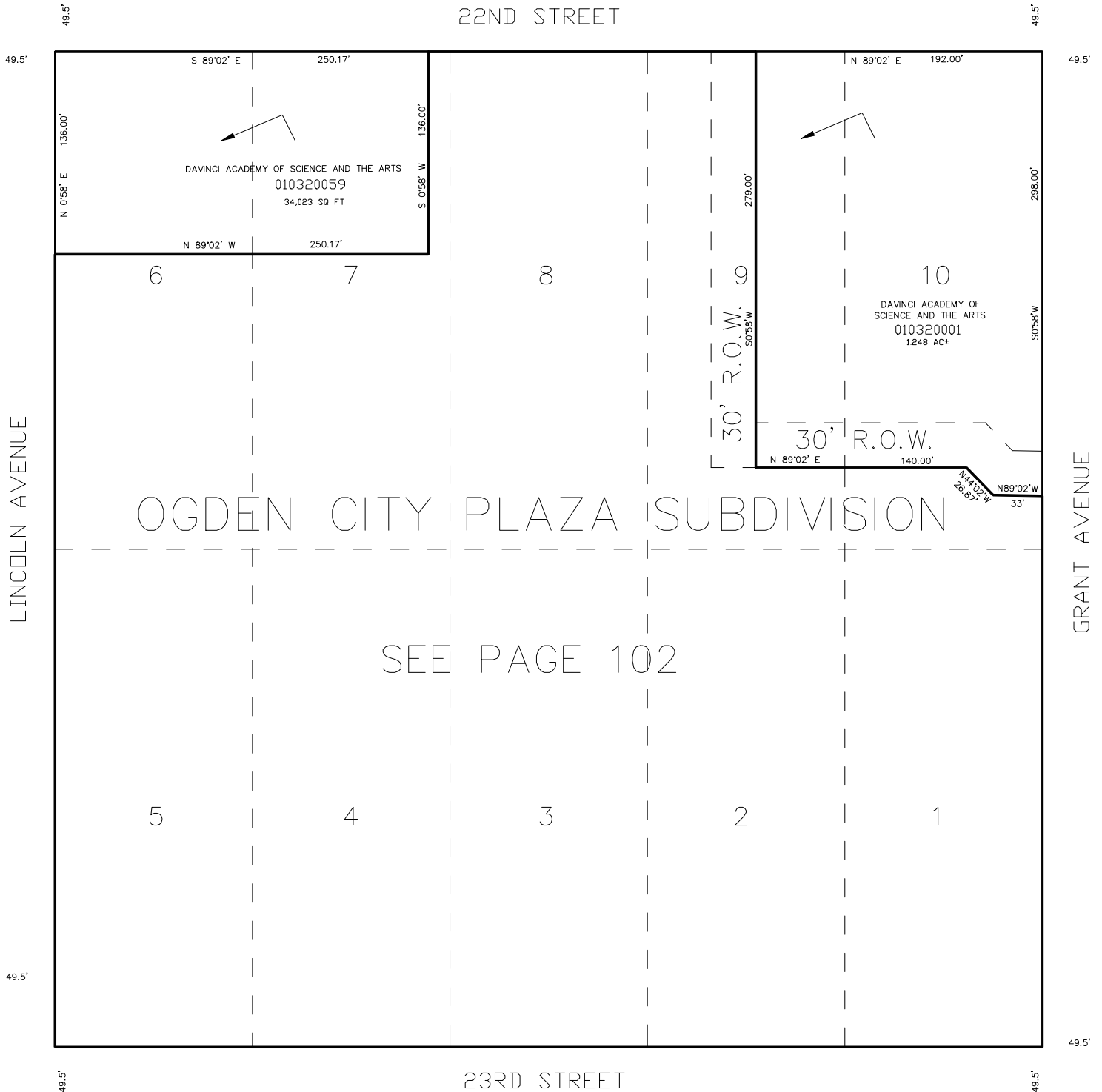
TAXING UNIT: 93

BLOCK 38 PLAT A

32

IN OGDEN CITY
SCALE 1" = 50'

SEE PAGE 41
22ND STREET



OGDEN CITY PLAZA SUBDIVISION

SEE PAGE 102

NOTE: OGDEN CITY ENG. DEPT. SHOWS EACH LOT AS BEING 133.4' X 331.02' SEE PAGE 29

FOR TAX PURPOSES ONLY

MTT 08-96

SEE PAGE 31

SEE PAGE 33