

# BLOCK 43 PLAT A

37

TAXING UNIT: 25, 521

IN OGDEN CITY

SCALE 1" = 50'

21ST

SEE PAGE 46

STREET

49.5'

49.5'

JEFFERSON AVENUE

SEE PAGE 38

JEFFERSON AVENUE

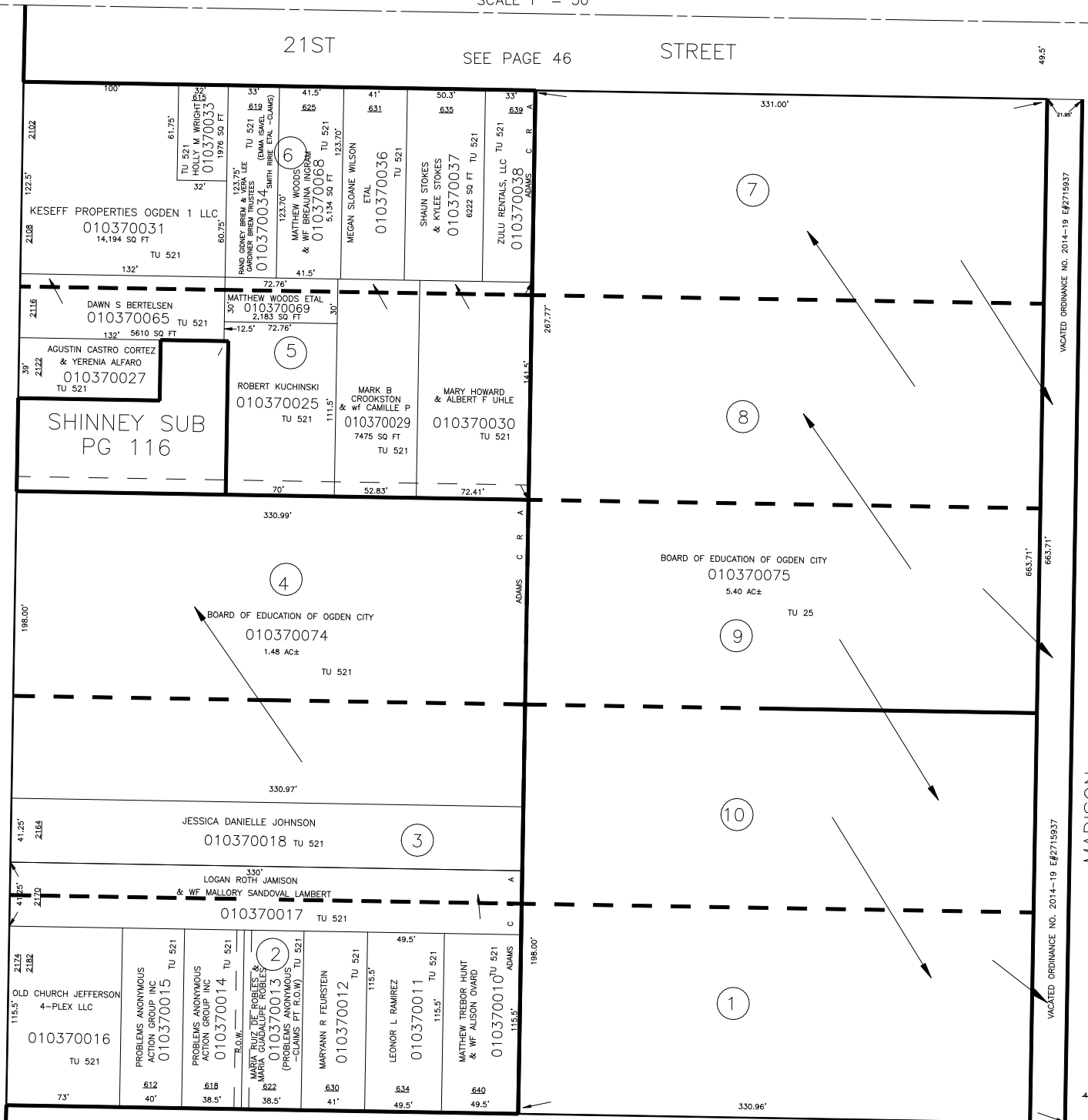
JEFFERSON AVENUE

SEE PAGE 84

MADISON AVENUE

VACATED ORDINANCE NO. 2014-19 E#2715937

VACATED ORDINANCE NO. 2014-19 E#2715937



\*FOR TAX PURPOSES ONLY\*

SEE PAGE 36

OGDEN CITY ENG. DEPT. DATA SHOWS EACH LOT AS BEING 132.68'x330.85'

W.F.J. 8-69