

PART OF LOTS 4,5,6,7,8, AND 9, BLOCK 20 PLAT A OGDEN CITY SURVEY

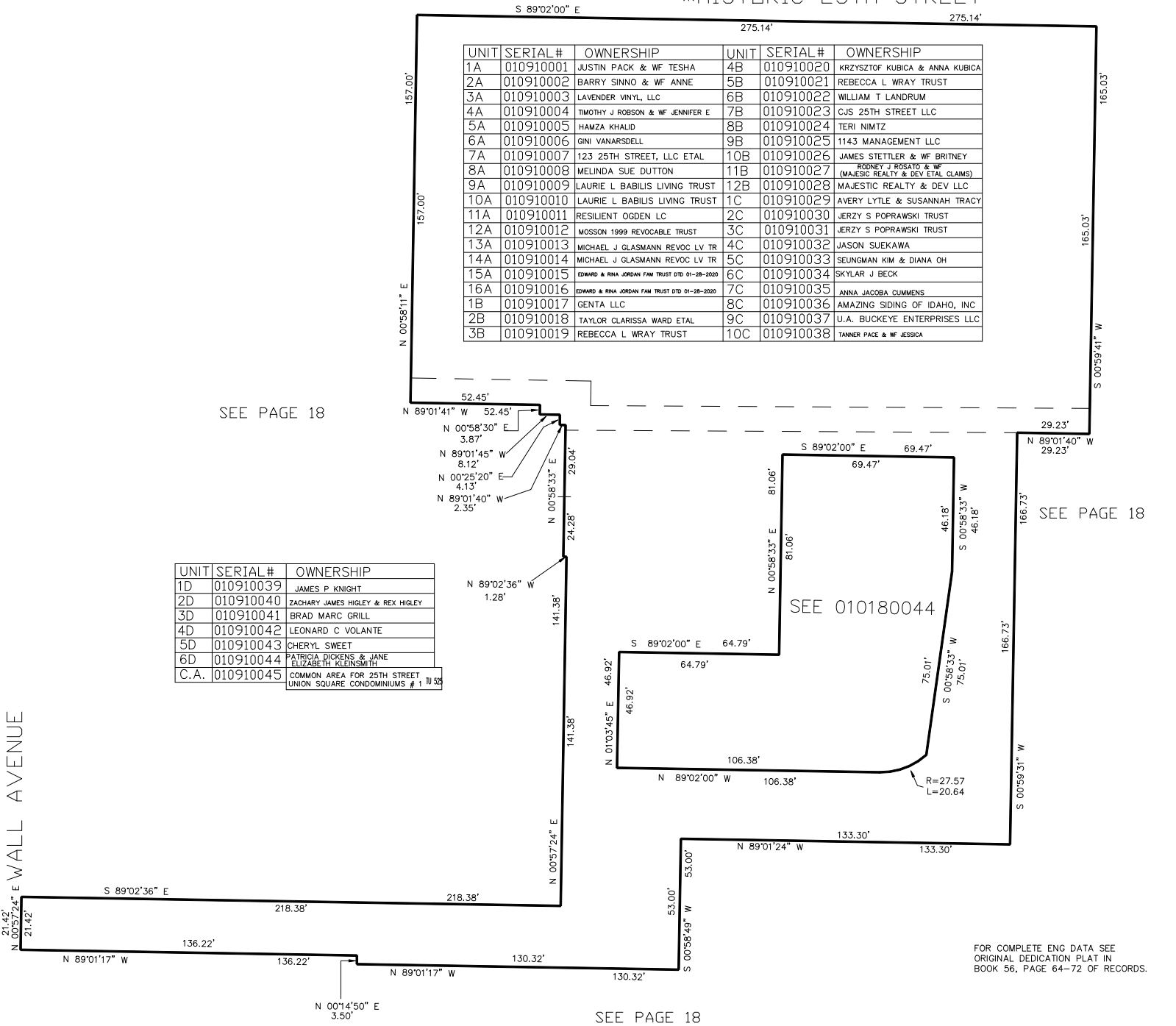
# 25TH STREET UNION SQUARE CONDOMINIUMS—PHASE 1

TAXING UNIT: 25

IN OGDEN CITY  
SCALE 1" = 30'

SEE PAGE 18

\*HISTORIC 25TH STREET



UNIT	SERIAL#	OWNERSHIP
1D	010910039	JAMES P. KNIGHT
2D	010910040	ZACHARY JAMES HIGLEY & REX HIGLEY
3D	010910041	BRAD MARC GRILL
4D	010910042	LEONARD C. VOLANTE
5D	010910043	CHERYL SWEET
6D	010910044	PATRICIA DICKENS & JANE ELIZABETH KLEINSMITH
C.A.	010910045	COMMON AREA FOR 25TH STREET UNION SQUARE CONDOMINIUMS # 1 TO 52

SEE 010180044

FOR COMPLETE ENG DATA SEE  
ORIGINAL DEDICATION PLAT IN  
BOOK 56, PAGE 64-72 OF RECORDS.

\*FOR TAX PURPOSES ONLY\*