

PART OF LOT 9 & LOT 10, BLOCK 20, PLAT A, OGDEN CITY SURVEY
TIME SQUARE CONDOMINIUM

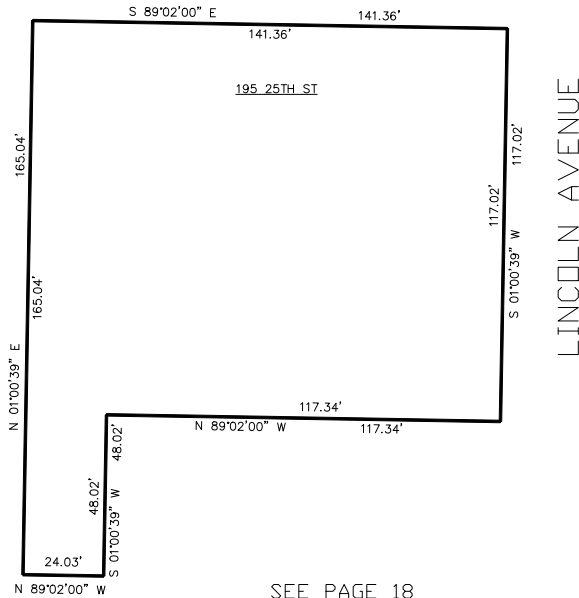
96

TAXING UNIT: 25

IN OGDEN CITY
 SCALE 1" = 30'

SEE PAGE 18

*HISTORIC 25TH STREET



SEE PAGE 18

SEE PAGE 18

SEE PAGE 18

UNIT	SERIAL#	OWNERSHIP	UNIT	SERIAL#	OWNERSHIP
1	010960001	B & N PROPERTIES, LLC	9	010960009	CAB PG, LLC
2	010960002	B & N PROPERTIES, LLC	TIME SQUARE COND. THIRD FLOOR FIRST AMENDMENT P. 107		
3	010960003	B & N PROPERTIES, LLC			
4	010960004	W 25TH ST. COMMERCIAL, LLC			
5	010960005	JARED E ALLEN			
6	010960006	STEVALL INVESTMENTS LLC,			
7	010960007	RYAN DENNIS & WF EVA			
8	010960008	RYAN DENNIS & WF EVA			
			C.A.	010960018	COMMON AREA IN TIME SQUARE CONDOMINIUM

10' UTILITY & DRAINAGE EASEMENTS EACH
 SIDE OF PROPERTY LINES AS INDICATED
 BY DASHED LINES EXCEPT AS OTHERWISE
 SHOWN.

FOR COMPLETE ENG DATA SEE
 ORIGINAL DEDICATION PLAT IN
 BOOK 62, PAGE 27-28 OF RECORDS.

*ORDINANCE 2009-56 E#3161269

FOR TAX PURPOSES ONLY

BK 08-05