

PART OF BLOCK 32, PLAT "A", OGDEN CITY SURVEY
 OGDEN CITY ENTERTAINMENT SUBDIVISION-PHASE 2 (AMENDED)
 LOT 11 2ND AMENDMENT

100

TAXING UNIT: 93

IN OGDEN CITY

SEE PAGE 99

SCALE 1" = 50'

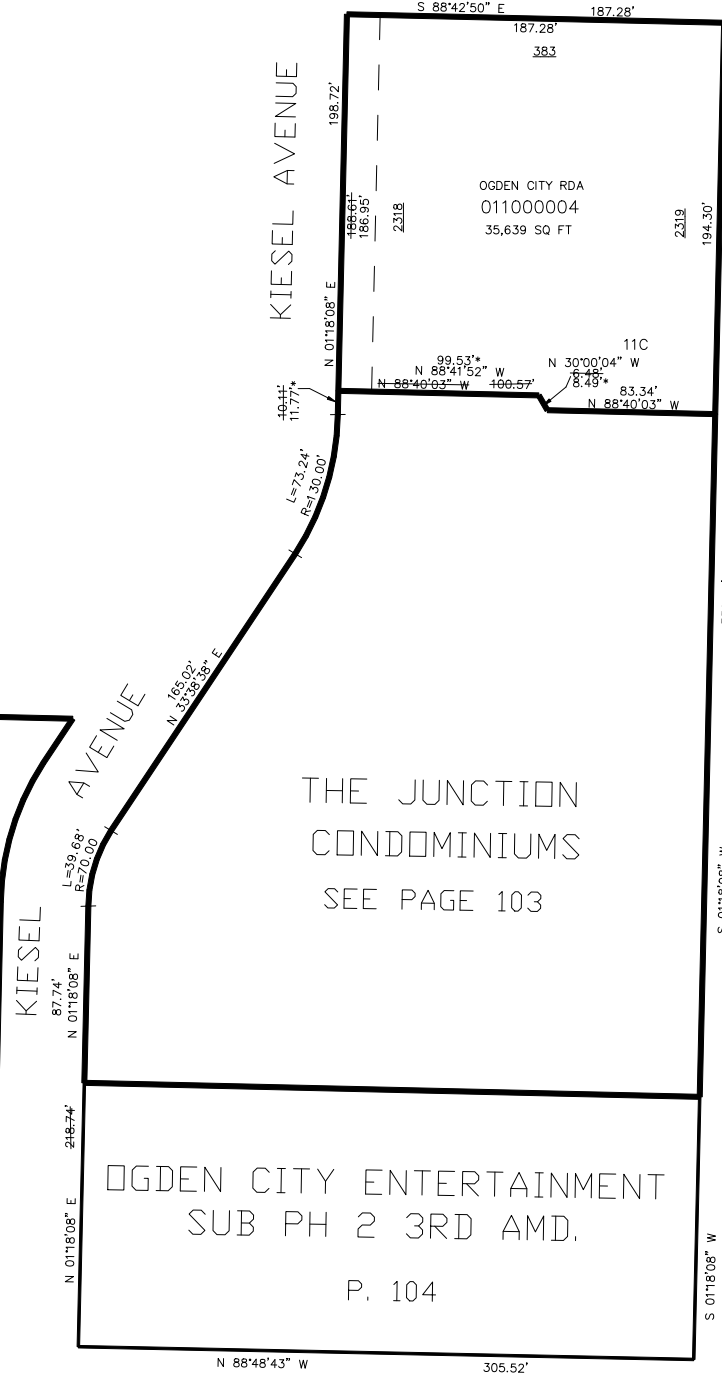
23RD STREET

SEE PAGE 99

THE JUNCTION
 CONDOMINIUMS
 SEE PAGE 103

SEE PAGE 99

10' UTILITY & DRAINAGE EASEMENTS EACH
 SIDE OF PROPERTY LINES AS INDICATED
 BY DASHED LINES EXCEPT AS OTHERWISE
 SHOWN.



THE JUNCTION
 CONDOMINIUMS
 SEE PAGE 103

OGDEN CITY ENTERTAINMENT
 SUB PH 2 3RD AMD.

P. 104

WASHINGTON BLVD.

SEE PAGE 99

*SEE PROPERTY LINE ADJUSTMENT
 RECORDED 27-AUG-2008 E#2361731

FOR COMPLETE ENG DATA SEE
 ORIGINAL DEDICATION PLAT IN
 BOOK 65, PAGE 56 OF RECORDS.

24TH STREET

SEE PAGE 99

FOR TAX PURPOSES ONLY

BK 03-07