

BLOCKS 49-52, 59-65 & LOTS 1-14, BLOCK 66, PLAT C

46

NOTE: NO RECORD OF BLOCKS 54-57 EVER HAVING BEEN SURVEYED OR PLATTED.

FOR BLOCKS 53 & 58, SEE VALLEY VIEW ADDITION

TAXING UNIT: 25, 238

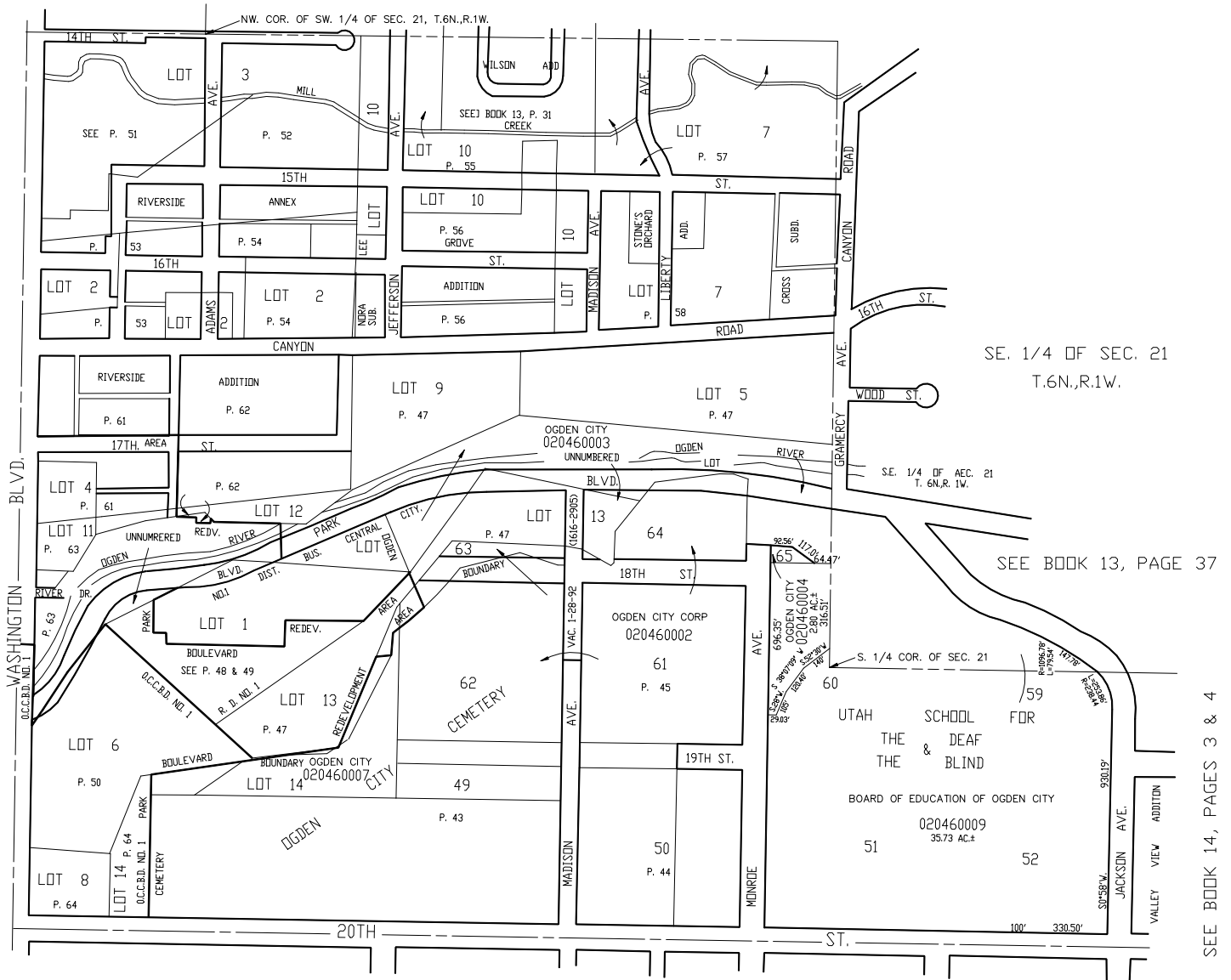
IN OGDEN CITY

SCALE 1" = 400'

SEE BOOK 12, PAGE 111

SEE BOOK 13, PAGE 37

SEE BOOK 13, PAGE 26



FOR COMPLETE ENG DATA SEE
ORIGINAL DEDICATION PLAT IN
BOOK 2, PAGE 1-4 OF RECORDS.

SEE BOOK 14, PAGES 3 & 4

FOR TAX PURPOSES ONLY

JPS 8-95