

BLOCK 7 FIVE ACRE PLAT A

LOTS 8,9,10,11,12 & 13 & PART OF LOT 7

IN OGDEN CITY

SCALE 1" = 100'

TAXING UNIT: 25

SEE BOOK 12 PAGE 126

1400.30' S89°11'E
FROM S.W. COR. OF
SEC. 20, T6N, R11W,
UTAH TRANSIT
AUTHORITY
SEE 121260010

SEE BOOK 12 PAGE 127

SEE 121270046

SEE 121260006

GIBSON AVE.

LOTUS 1790 GIBSON LLC
030150037
2.21 AC±

OGDEN REDEVELOPMENT AGENCY
030150036
4.16 AC±

13

OGDEN
WAL-MART
SUB 3RD AMD
SEE PG 58

OGDEN WAL-MART
SUB 1ST AMD
SEE PG 45

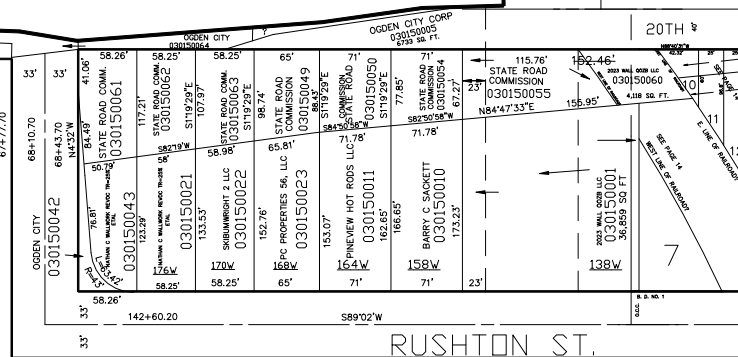
TAXING UNIT: 25, 390

SEE PAGE 12

SEE PAGE 15

SEE PAGE 9-2

NOTE: PLAT DRAWN FROM CITY ENG. PLAT DATA



FOR TAX PURPOSES ONLY

SEE PAGE 9-1

MTT 06-96