

BLOCK 3, SOUTH OGDEN SURVEY FLORENCE PARK ADDITION

BLOCKS 5 & 6

IN OGDEN CITY

SCALE 1" = 50'

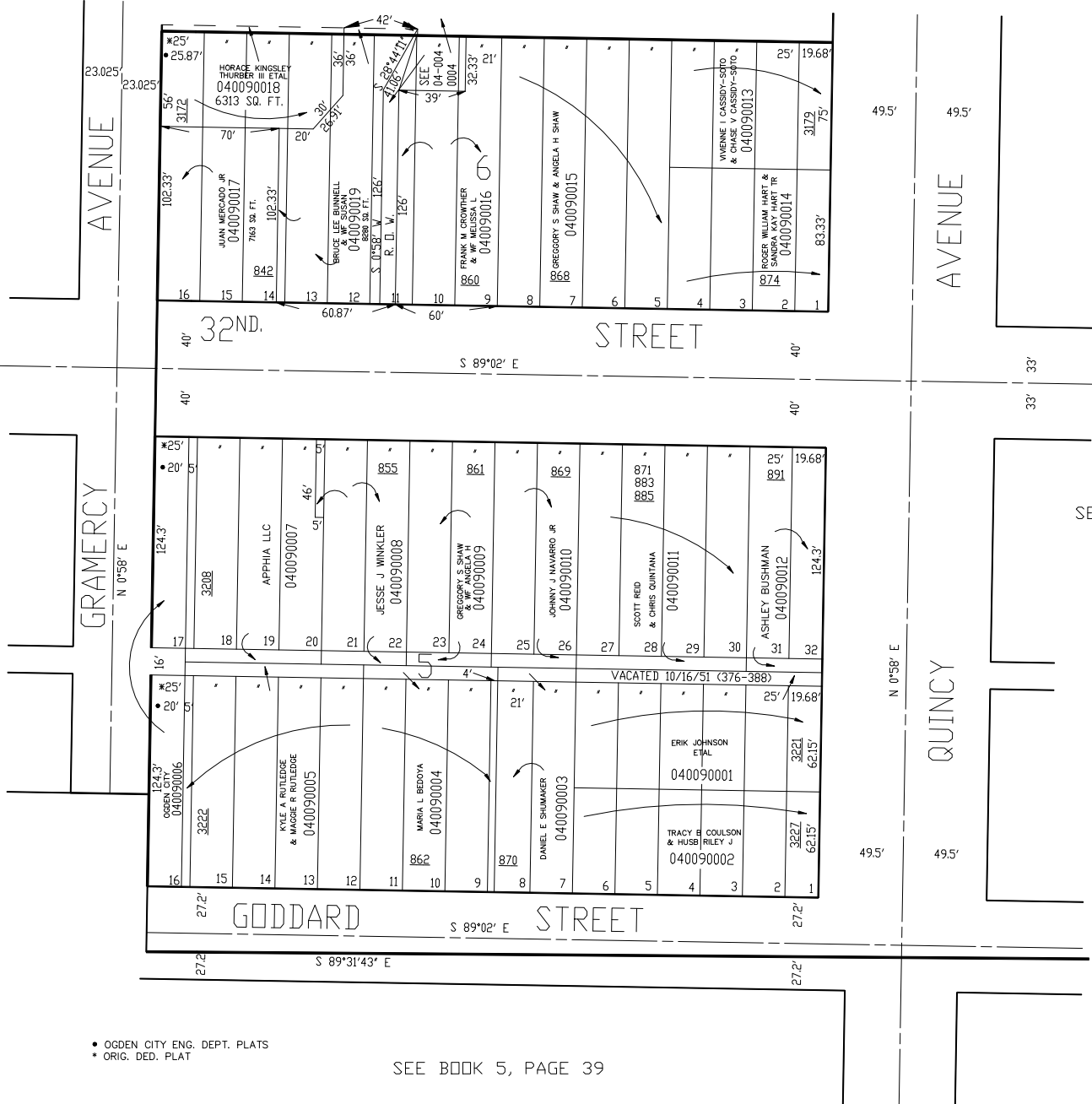
TAXING UNIT: 25

SEE PAGE 4

SEE BOOK 14, PAGE 59

SEE BOOK 14, PAGE 61

SEE PAGE 8



• OGDEN CITY ENG. DEPT. PLATS
* ORIG. DED. PLAT

SEE BOOK 5, PAGE 39

FOR TAX PURPOSES ONLY

JPS 5-95