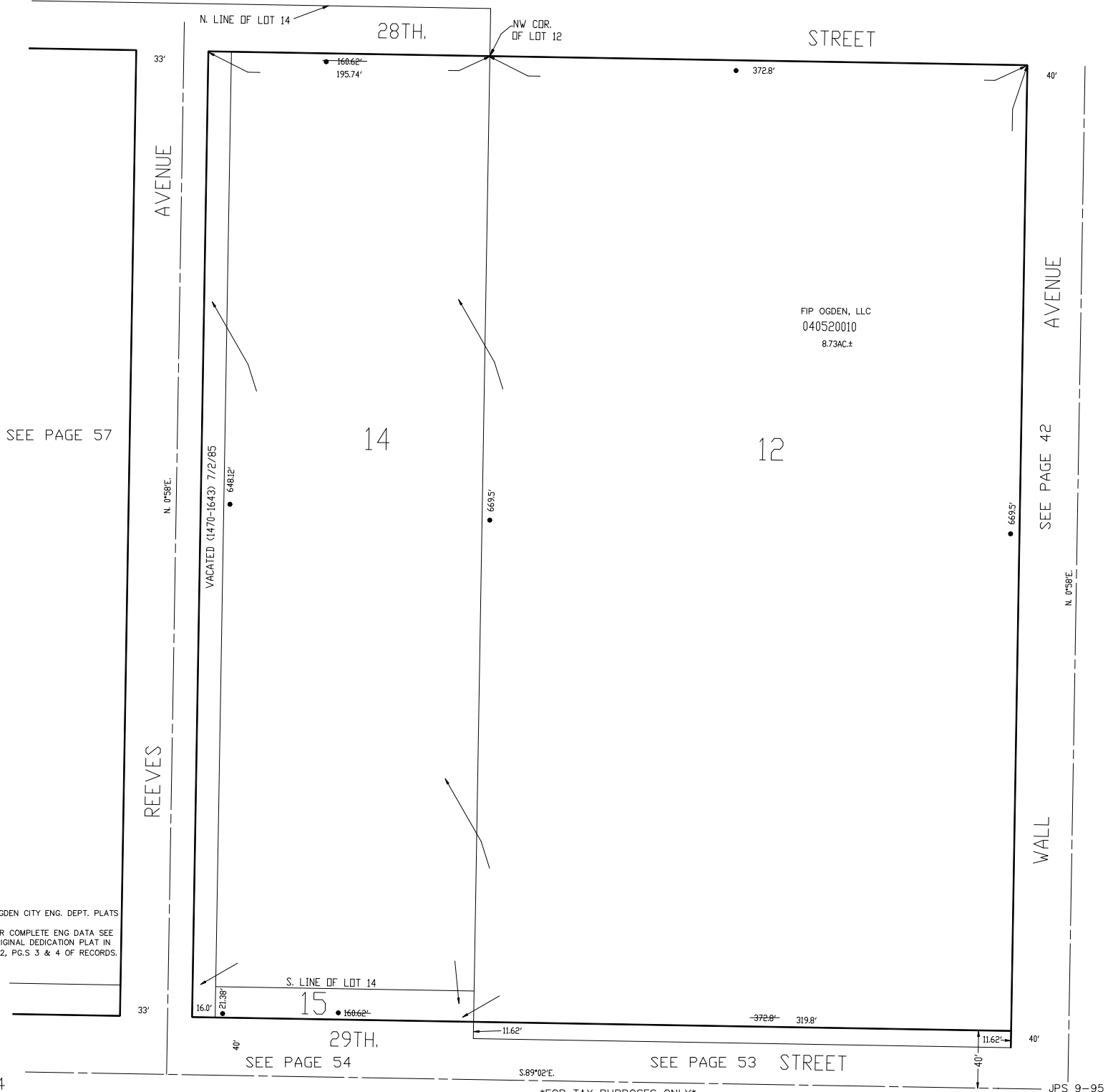


PART OF LOTS 12, 14 & 15, BLOCK 10
SOUTH OGDEN SURVEY

TAXING UNIT: 25

IN OGDEN CITY
SCALE 1" = 50'

SEE BOOK 3, PAGE 1



• OGDEN CITY ENG. DEPT. PLATS
FOR COMPLETE ENG DATA SEE
ORIGINAL DEDICATION PLAT IN
BK 2, PGS 3 & 4 OF RECORDS.

FOR TAX PURPOSES ONLY

JPS 9-95