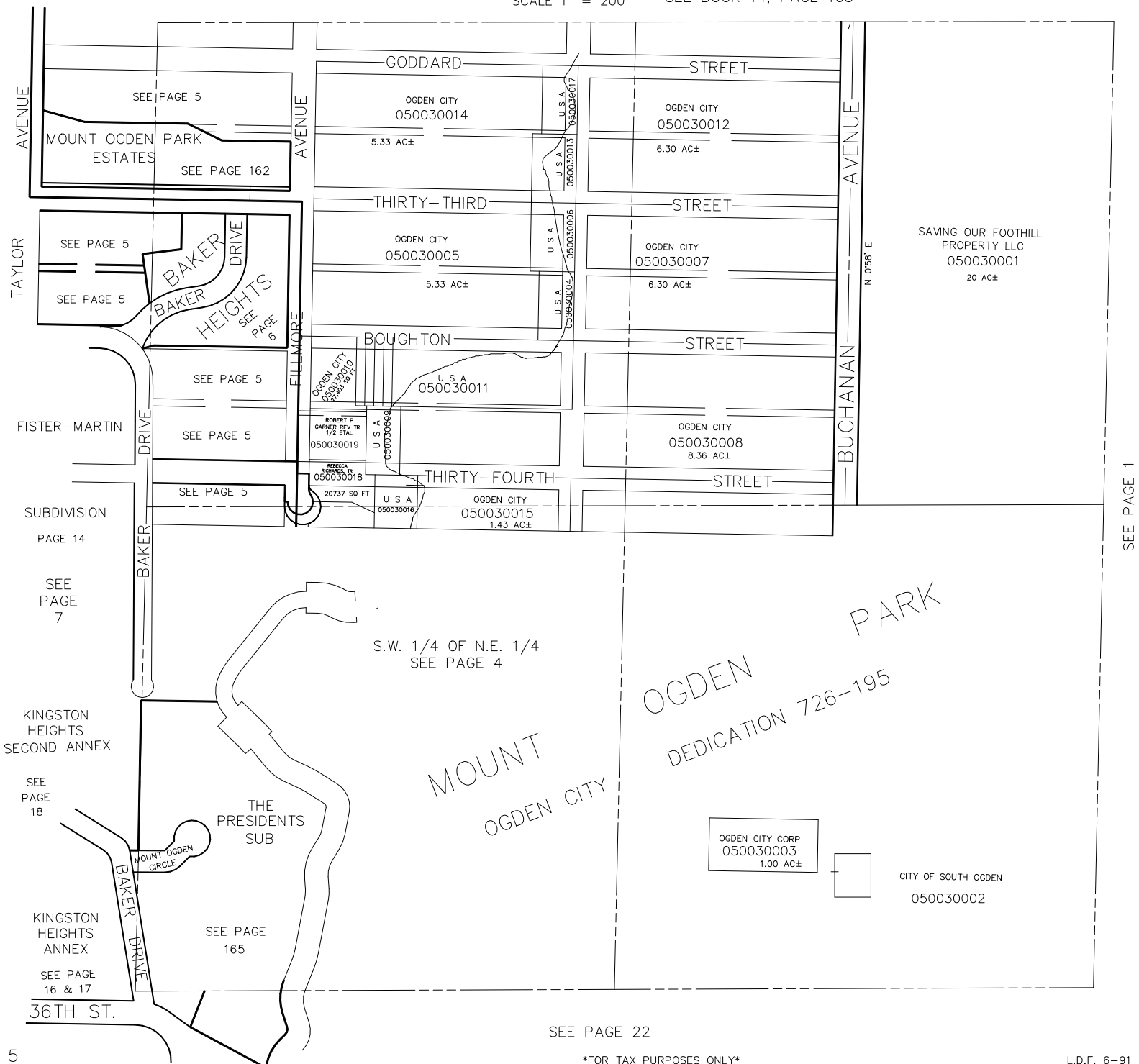


N.E. 1/4
SECTION 3, T.5N., R.1W., S.L.B. & M.
UNIVERSITY PLACE ADDITION

TAXING UNIT: 25

BLKS. 39 TO 41, 45 TO 47, & 50 TO 55
IN OGDEN CITY

SCALE 1" = 200' SEE BOOK 14, PAGE 103



SEE PAGE 22

FOR TAX PURPOSES ONLY