

PART OF THE NORTH 1/2, SEC. 3, T.5N., R.1W., S.L.B. & M.

5

UNIVERSITY PLACE ADDITION

BLOCKS 41, 42, 45, 52 & 53

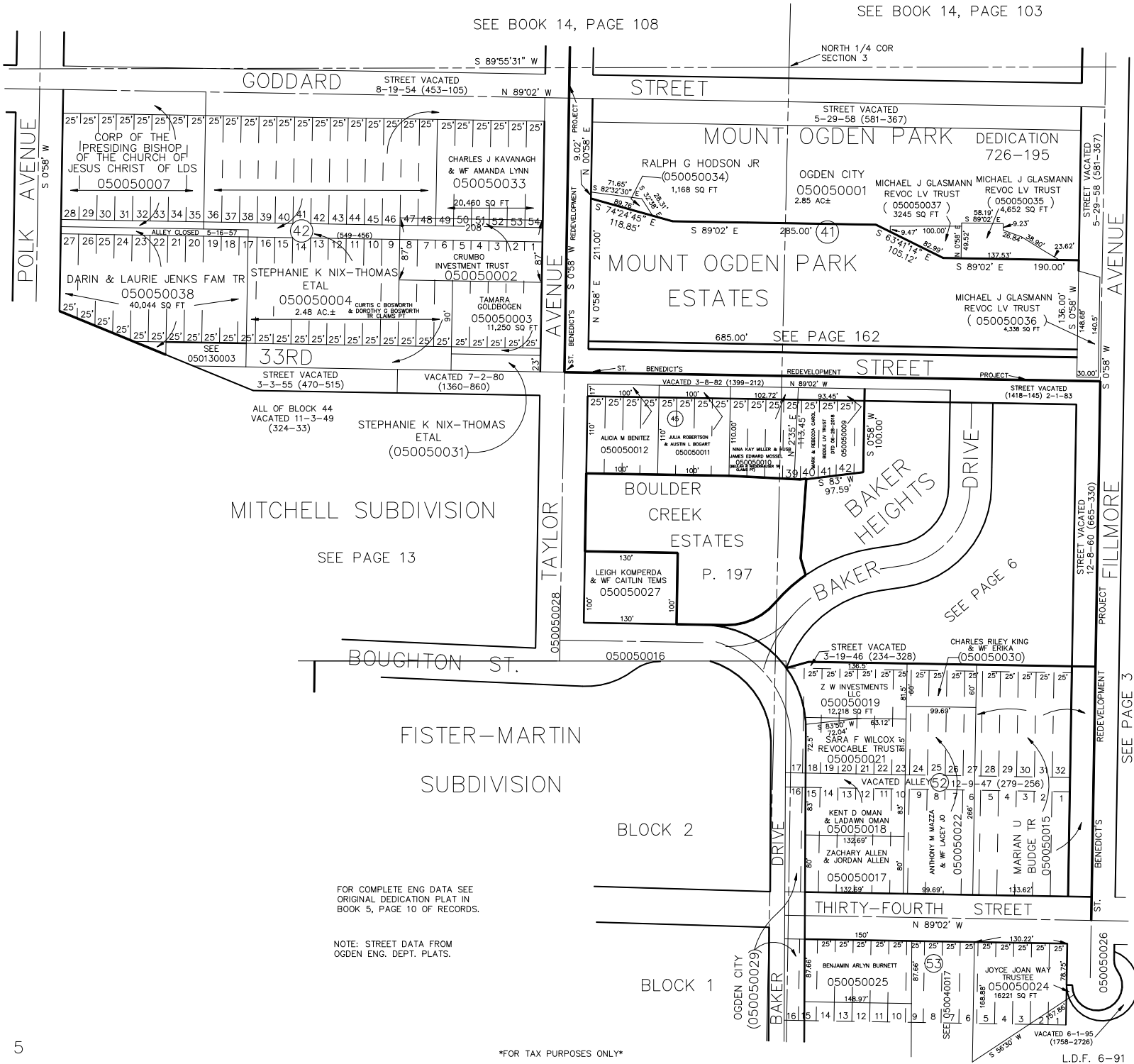
TAXING UNIT: 25

IN OGDEN CITY

SCALE 1" = 100'

SEE BOOK 14, PAGE 108

SEE BOOK 14, PAGE 103



5

FOR TAX PURPOSES ONLY

L.D.F. 6-91