

N.W. 1/4
SECTION 3, T.5N., R.1W., S.L.B. & M.

IN OGDEN CITY
SCALE 1" = 200'

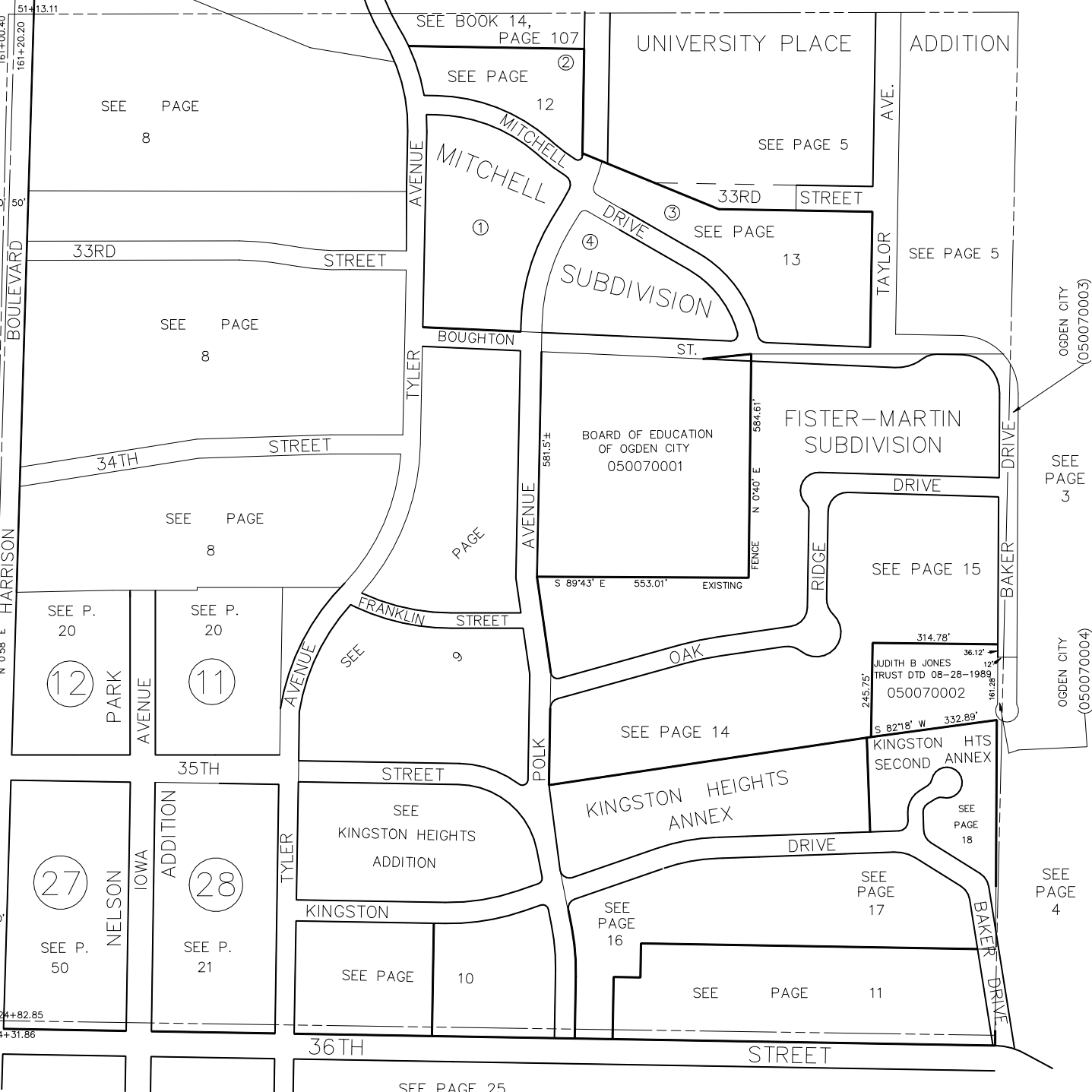
TAXING UNIT: 25

SEE BOOK 14, PAGE 62

SEE
PAGE
37

SEE
PAGE
43

SEE
PAGE
50



OGDEN CITY
(050070003)

SEE
PAGE
3

OGDEN CITY
(050070004)

SEE
PAGE
4