

PART OF NW 1/4
SECTION 3, T.5N., R.1W., S.L.B. & M.

TAXING UNIT: 25

IN OGDEN CITY
SCALE 1" = 100'

SEE PAGE 12

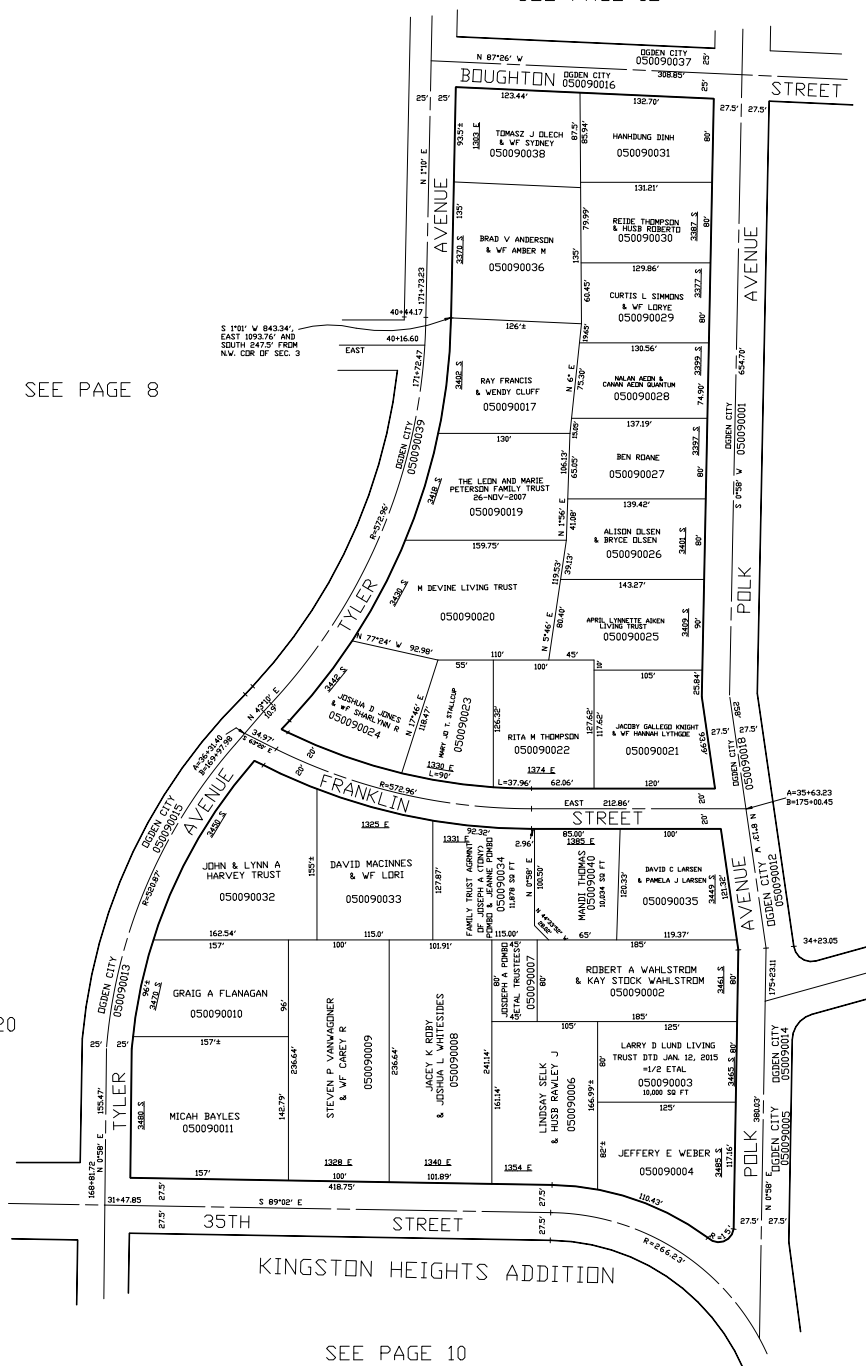
SEE PAGE 8

SEE PAGE 7

SEE PAGE 20

SEE PAGE 14

SEE PAGE 10



FOR TAX PURPOSES ONLY