

PART OF THE S.E. 1/4, SEC. 4, T.5N., R.1W., S.L.B. & M.

75

AMENDED PLAT OF

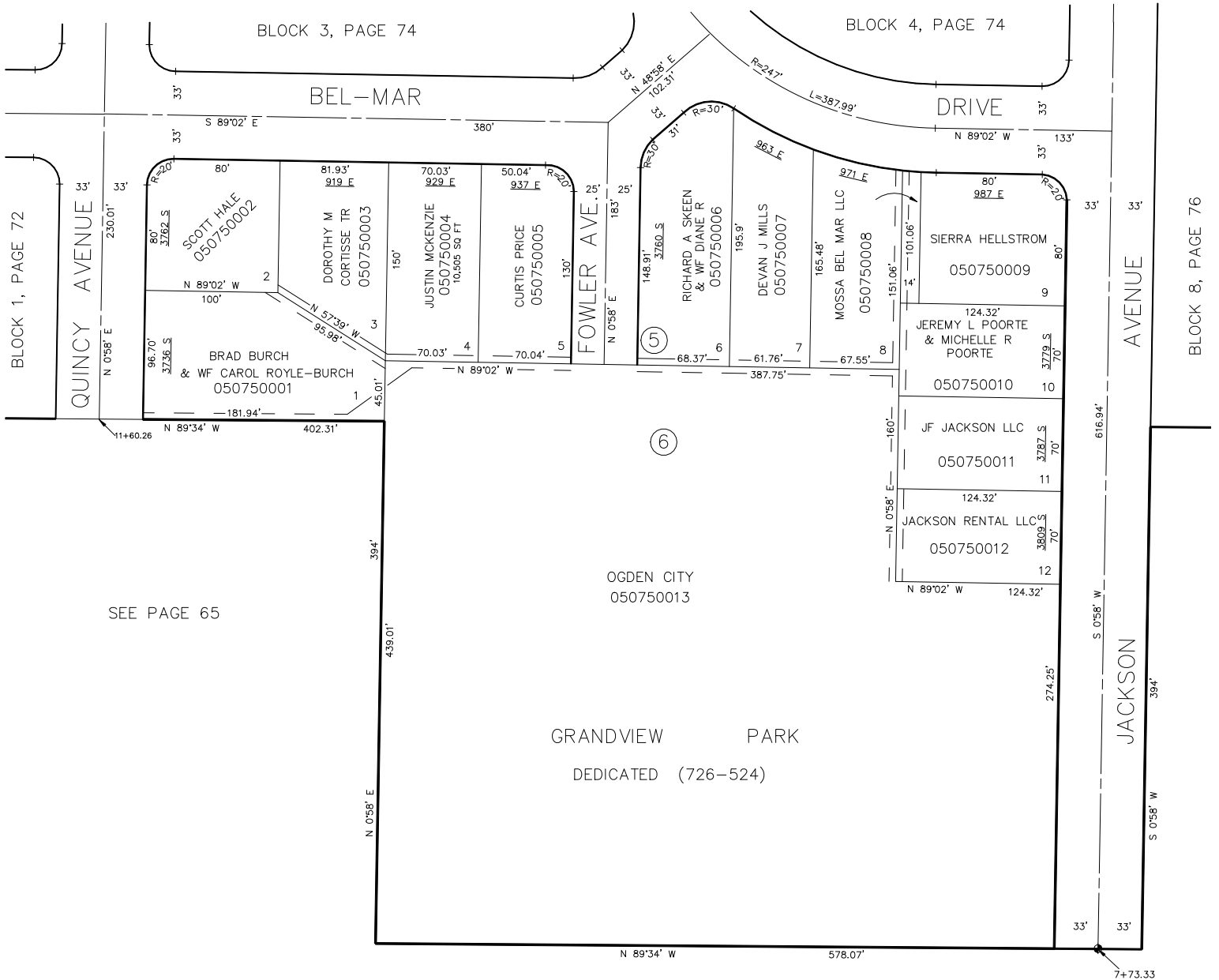
MONTE VISTA SUBDIVISION

TAXING UNIT: 25

BLOCKS 5 & 6

IN OGDEN CITY

SCALE 1" = 60'



SEE PAGE 65

OGDEN CITY
050750013

GRANDVIEW PARK
DEDICATED (726-524)

5' UTILITY & DRAINAGE EASEMENTS EACH
SIDE OF PROPERTY LINES AS INDICATED
BY DASHED LINES EXCEPT AS OTHERWISE
SHOWN.

(IN 1948 THIS PLAT WAS AMENDED BUT, THE WORD
AMENDED WAS LEFT OFF SOME LEGAL DESCRIPTIONS,
IN APRIL 2002 WE ADDED AMENDED BACK TO THE
LEGAL DESCRIPTIONS.)

FOR COMPLETE ENG DATA SEE
ORIGINAL DEDICATION PLAT IN
BOOK 9, PAGE 64 OF RECORDS.

FOR TAX PURPOSES ONLY

L.D.F. 4-91