

PART OF THE SE. 1/4 SECTION 5, & PART OF SW. 1/4 SECTION 4,
T.5N., R.1W., S.L.B. & M.

91

AMENDED PLAT OF LINWOOD PLACE BLOCKS 1 & 2

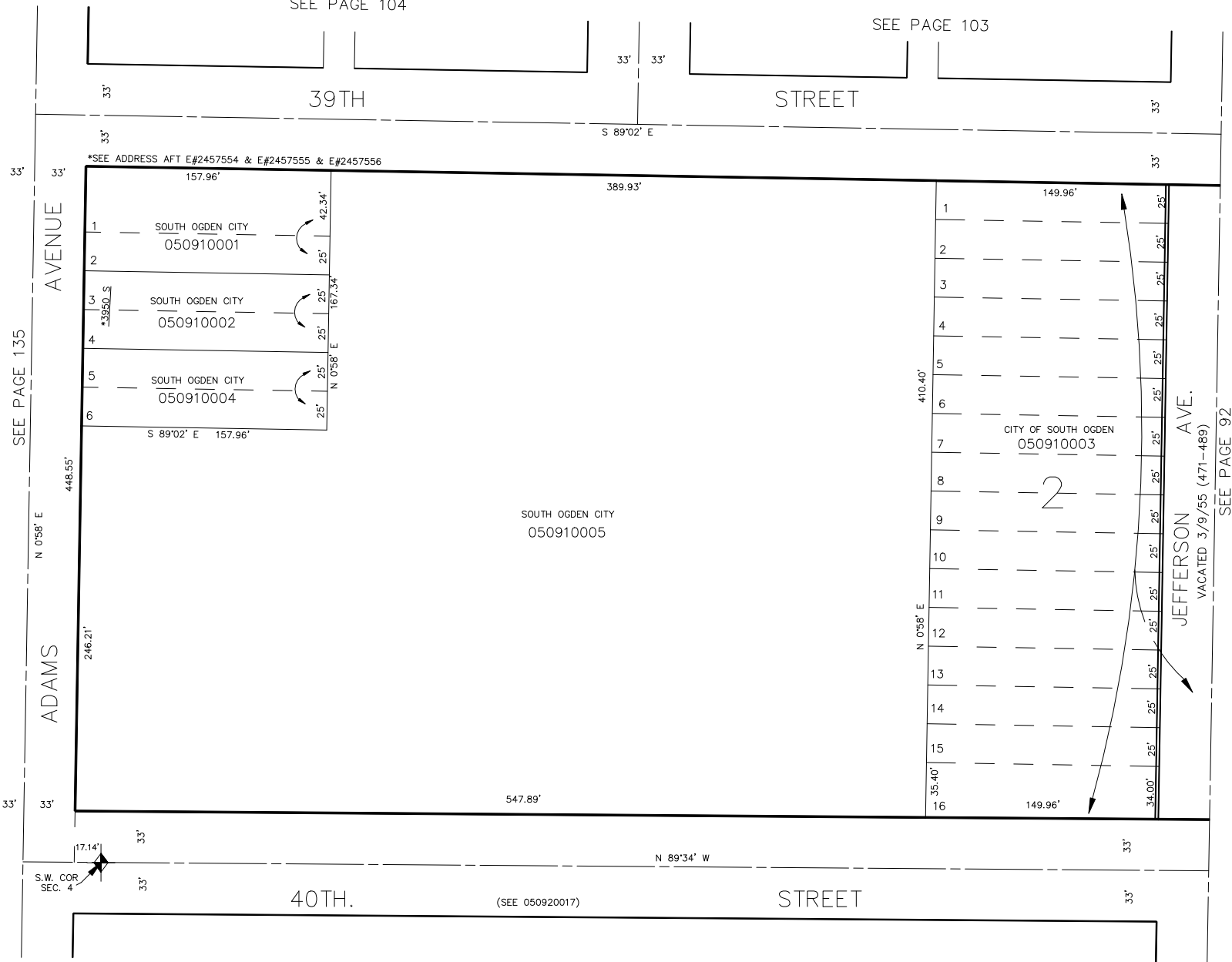
TAXING UNIT: 540

IN SOUTH OGDEN CITY

SCALE 1" = 50'

SEE PAGE 104

SEE PAGE 103



SEE BOOK 6, PAGE 83

FOR TAX PURPOSES ONLY

KBR 04-91