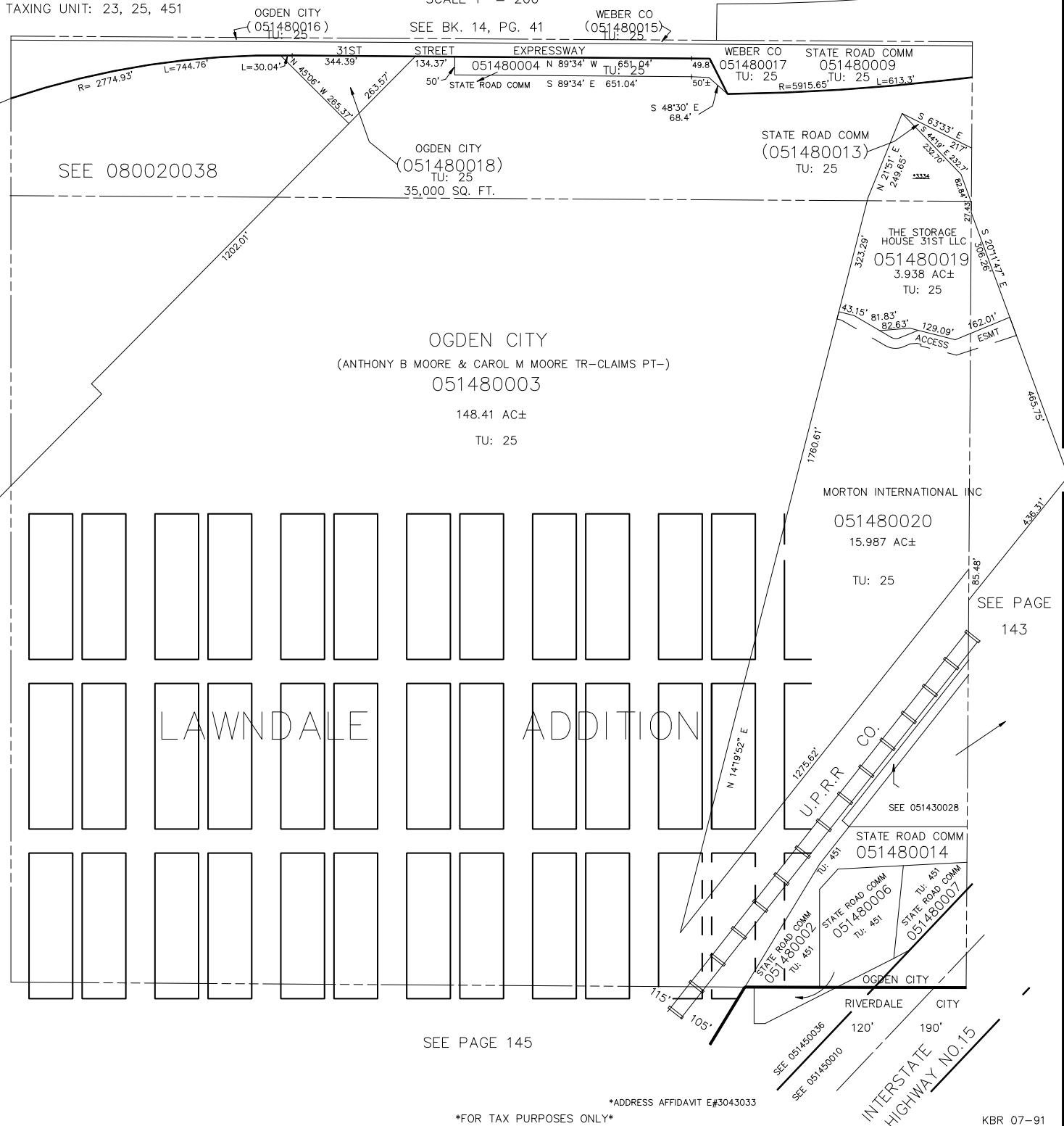


NW. 1/4 OF  
SECTION 6, T.5N., R.1W., S.L.B. & M.  
IN OGDEN CITY & RIVERDALE CITY

SCALE 1" = 200'

TAXING UNIT: 23, 25, 451



SEE 080020038

OGDEN CITY  
(ANTHONY B MOORE & CAROL M MOORE TR-CLAIMS PT-)  
051480003  
148.41 AC±  
TU: 25

STATE ROAD COMM  
(051480013)  
TU: 25

THE STORAGE  
HOUSE 31ST LLC  
051480019  
3.938 AC±  
TU: 25

MORTON INTERNATIONAL INC  
051480020  
15.987 AC±  
TU: 25

STATE ROAD COMM  
051480014  
TU: 451

STATE ROAD COMM  
051480002  
TU: 451

STATE ROAD COMM  
051480006  
TU: 451

STATE ROAD COMM  
051480007  
TU: 451

SEE PAGE 145

SEE PAGE  
143

SEE BK. 8  
PG. 2