

PART SE 1/4 OF SEC. 9 & PART NE 1/4 OF SEC. 16, T.5N., R.1W., S.L.B. & M.

34

OXFORD PLACE SUBDIVISION

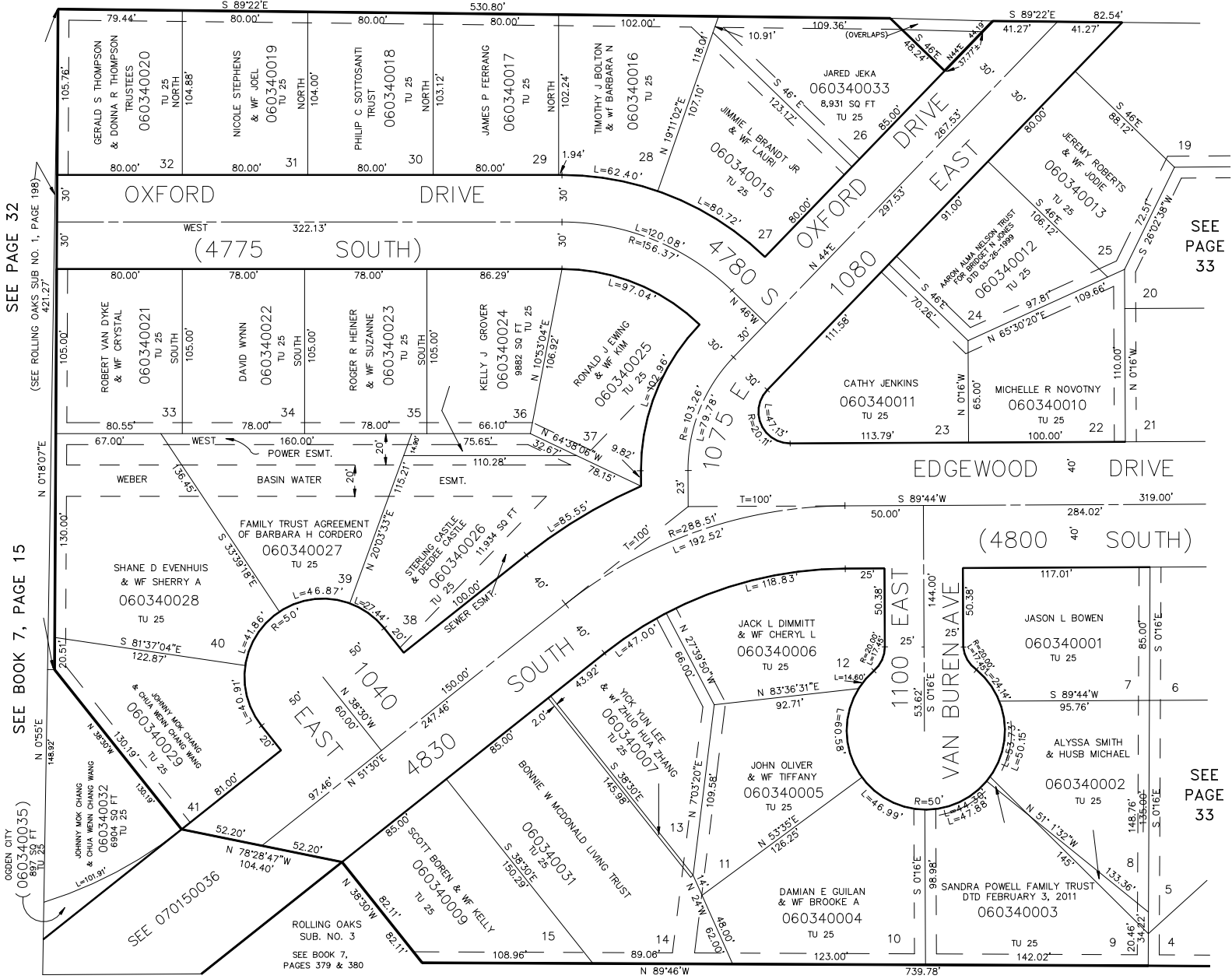
LOTS 7-15 & 22-41

TAXING UNIT: 25

IN OGDEN CITY

SCALE: 1"=50'

SEE PAGE 32



NOTE: ALL EASEMENTS (INDICATED BY DASHED LINES) ARE 7.0 FEET WIDE, UNLESS OTHERWISE INDICATED.

SEE BOOK 7, PAGE 15

FOR COMPLETE ENG. DATA SEE ORIGINAL DEDICATION PLAT IN BOOK 15, PAGE 56 OF RECORDS.

FOR TAX PURPOSES ONLY

S.H.L. 12-87