

PART OF NE 1/4 OF NW 1/4 SEC. 9, T.5N., R.1W., S.L.B. & M.

36

SOUTH OGDEN PLAT 'A'

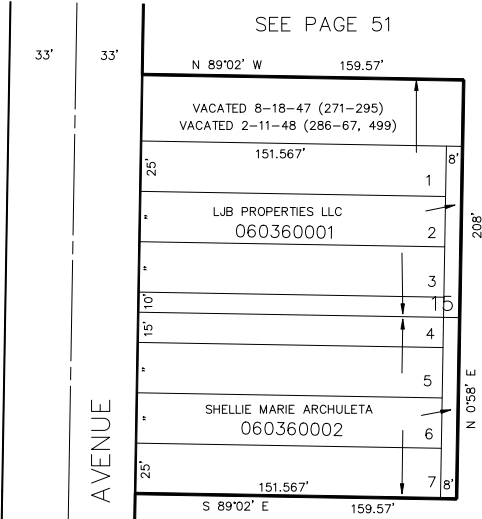
PART OF BLOCK 15

IN SOUTH OGDEN CITY

SCALE 1" = 50'

TAXING UNIT: 540

SEE PAGE 51



PLATTING OF LOTS 8-52
& ALLEY VACATED
2-11-48 (286-70)

SEE GOODSSELL ADDITION
PAGE 51

SEE PAGE 35

SEE GOODSSELL ANNEX
SUBDIVISION
SEE PAGE 52

FOR COMPLETE ENG DATA SEE
ORIGINAL DEDICATION PLAT IN
BOOK 6, PAGE 25 OF RECORDS.