

PART OF W 1/2 OF NW 1/4 OF SEC. 9, T.5N., R.1W., S.L.B. & M.

39

# SOUTH OGDEN PLAT 'A'

BLOCKS 20 & 21

TAXING UNIT: 27

IN SOUTH OGDEN CITY

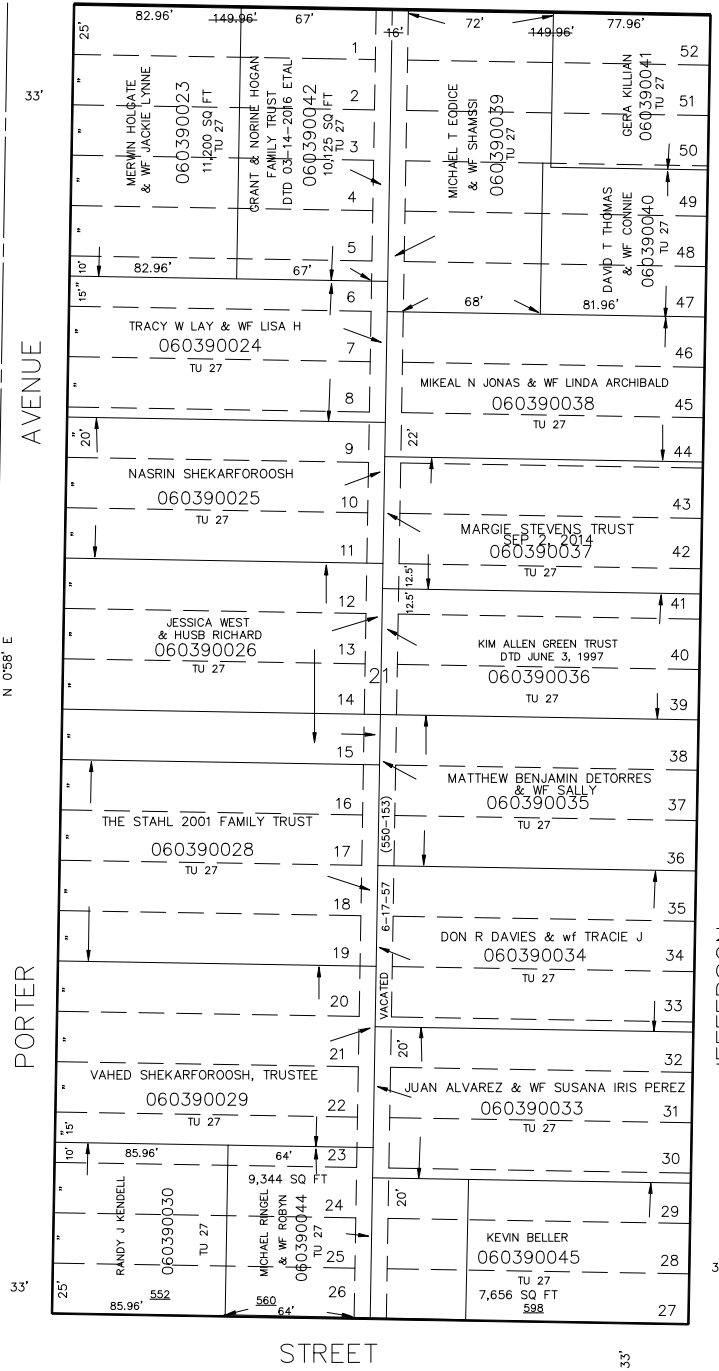
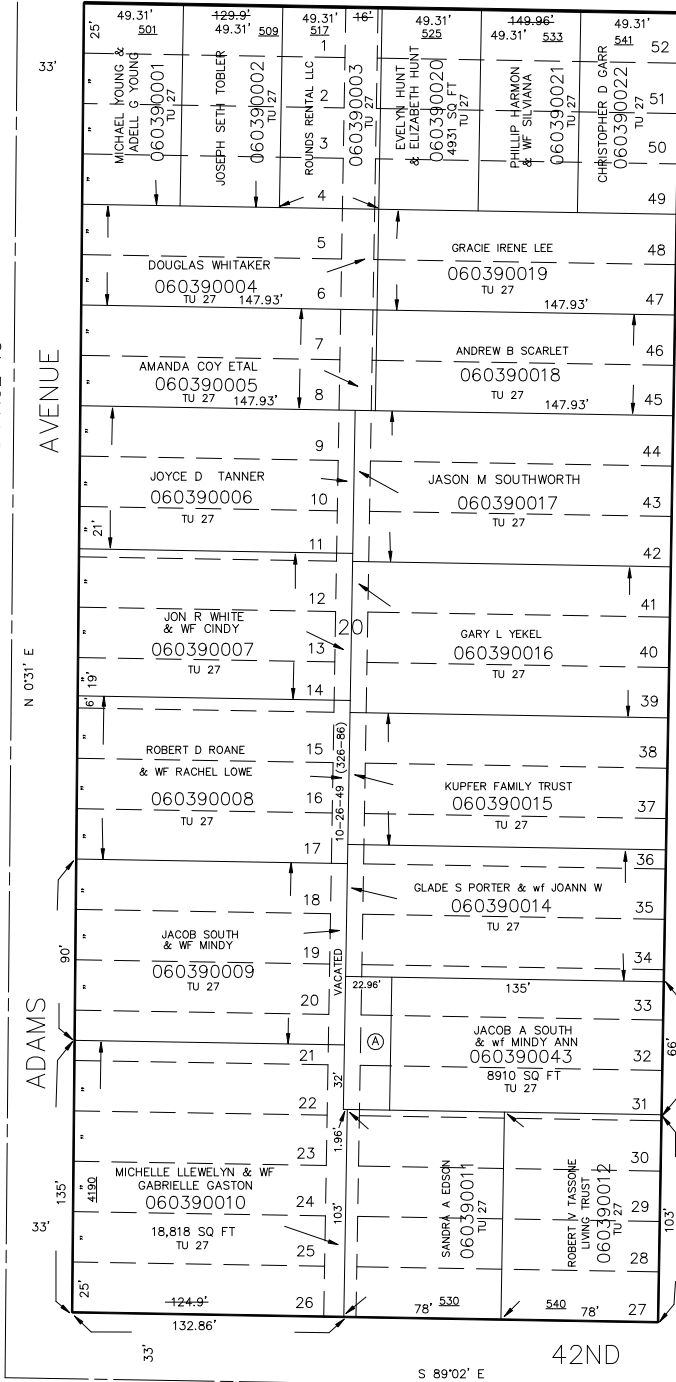
SEE PAGE 38

41ST

SCALE 1" = 50'

STREET

SEE PAGE 19



SEE PAGE 40

BARBARA BEEBE  
060390013  
1515 SQ FT  
TU 27

SEE PAGE 45

\*FOR TAX PURPOSES ONLY\*

FOR COMPLETE ENG DATA SEE  
ORIGINAL DEDICATION PLAT IN  
BOOK 6, PAGE 25 OF RECORDS.

KST 8-90