

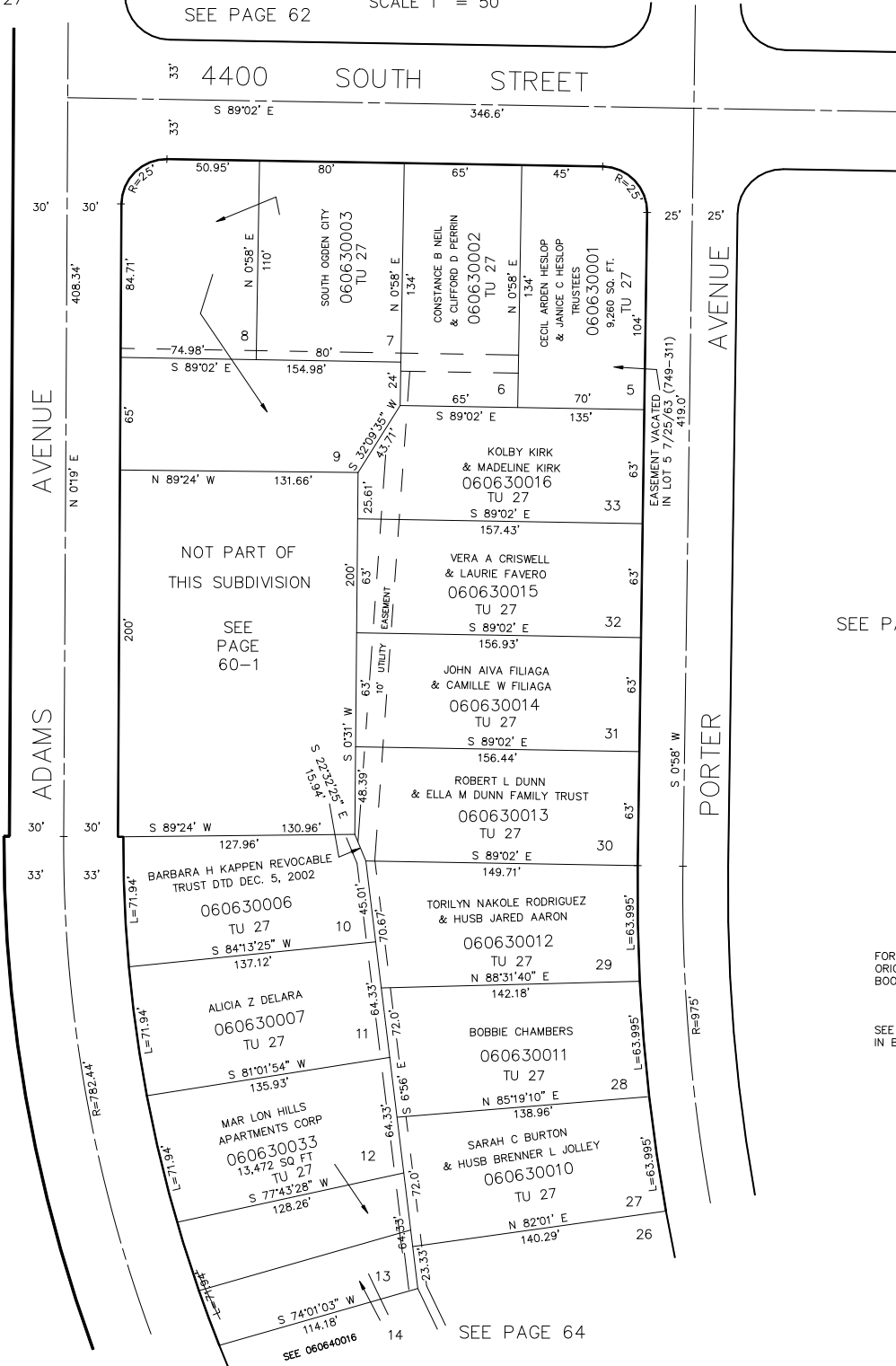
AMENDED PLAT OF PART OF
MAR LON HILLS NO. 1
LOTS 5-13 & 27-33

IN SOUTH OGDEN CITY

SCALE 1" = 50'

TAXING UNIT: 27

SEE PAGE 62



SEE PAGE 19

SEE PAGE 65

5' UTILITY & DRAINAGE EASEMENTS EACH
SIDE OF PROPERTY LINES AS INDICATED
BY DASHED LINES EXCEPT AS OTHERWISE
SHOWN.

FOR COMPLETE ENG DATA SEE
ORIGINAL DEDICATION PLAT IN
BOOK 9, PAGE 97 OF RECORDS.

SEE ORIGINAL AMENDED PLAT
IN BOOK 11, PAGE 12 OF RECORDS.

SEE PAGE 64

FOR TAX PURPOSES ONLY

L.D.F. 8-90