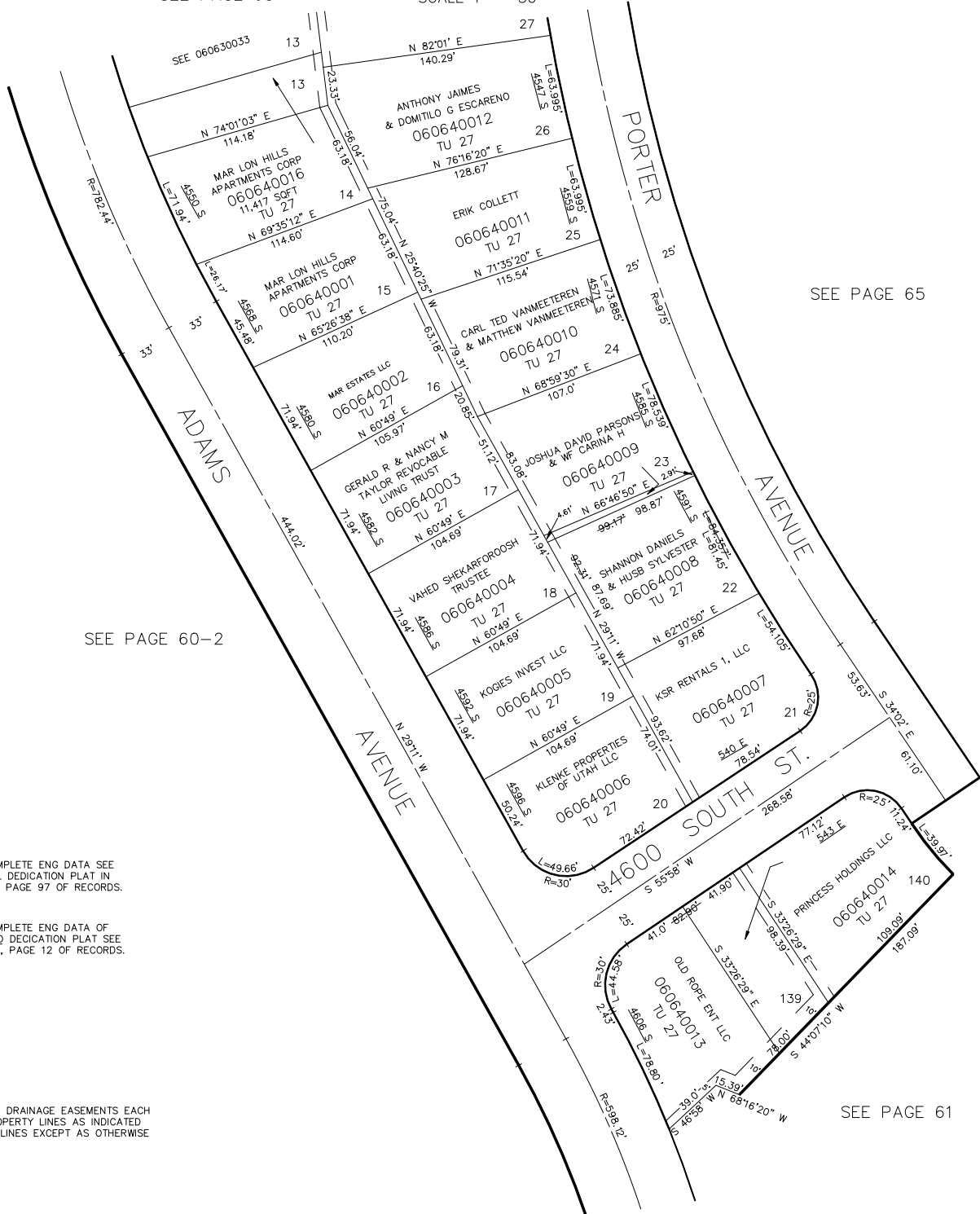


AMENDED PLAT OF PART OF
MAR LON HILLS NO. 1

LOTS 14-26, 139 & 140
IN SOUTH OGDEN CITY
SCALE 1" = 50'

TAXING UNIT: 27

SEE PAGE 63



SEE PAGE 65

SEE PAGE 60-2

FOR COMPLETE ENG DATA SEE
ORIGINAL DEDICATION PLAT IN
BOOK 9, PAGE 97 OF RECORDS.

FOR COMPLETE ENG DATA OF
AMENDED DEDICATION PLAT SEE
BOOK 11, PAGE 12 OF RECORDS.

5' UTILITY & DRAINAGE EASEMENTS EACH
SIDE OF PROPERTY LINES AS INDICATED
BY DASHED LINES EXCEPT AS OTHERWISE
SHOWN.

SEE PAGE 61

FOR TAX PURPOSES ONLY