

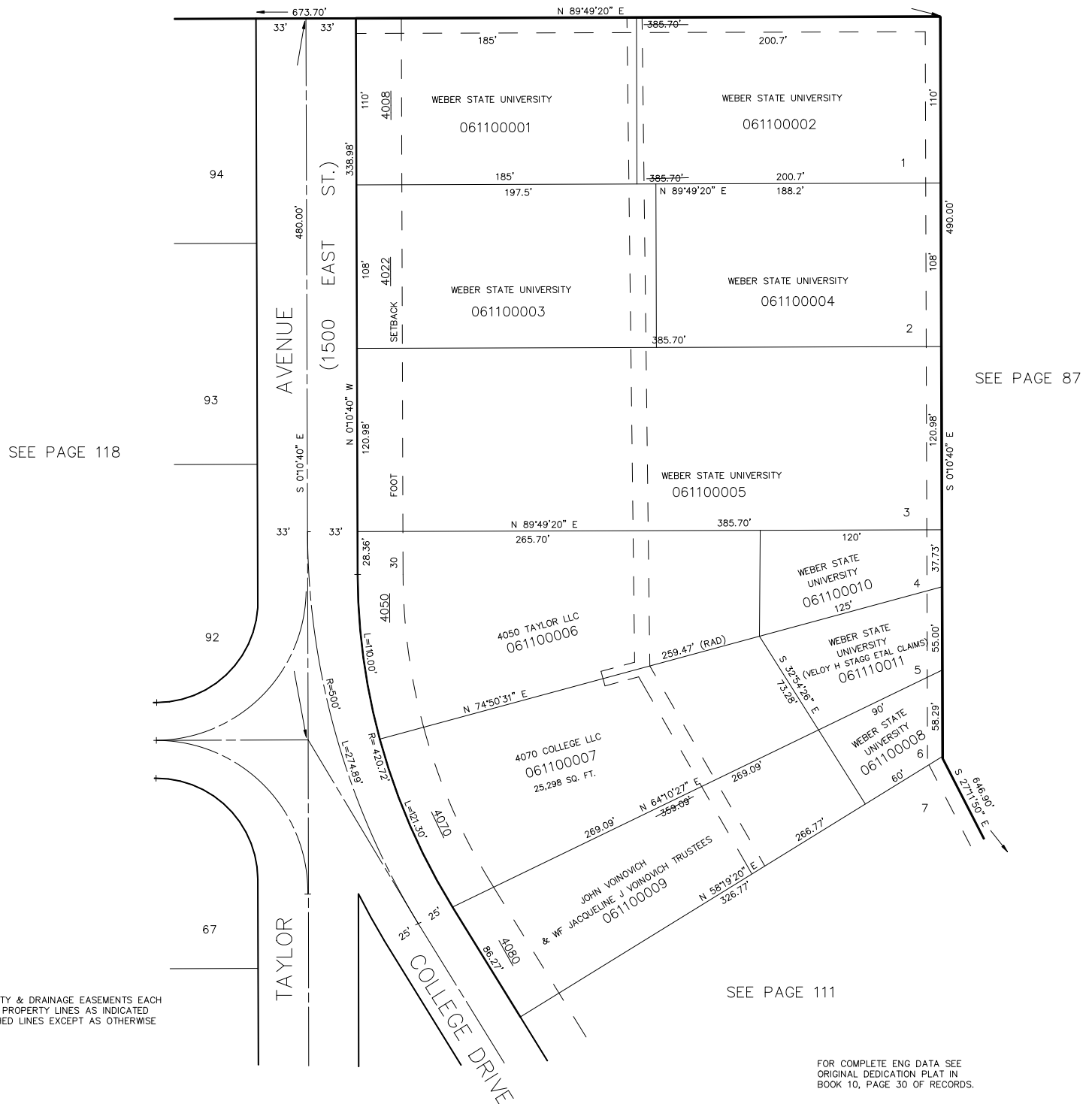
LOTS 1-6

IN OGDEN CITY

SCALE 1" = 50'

SEE BOOK 5, PAGE 25

TAXING UNIT: 25



FOR COMPLETE ENG DATA SEE
ORIGINAL DEDICATION PLAT IN
BOOK 10, PAGE 30 OF RECORDS.

FOR TAX PURPOSES ONLY

L.D.F. 9-90