

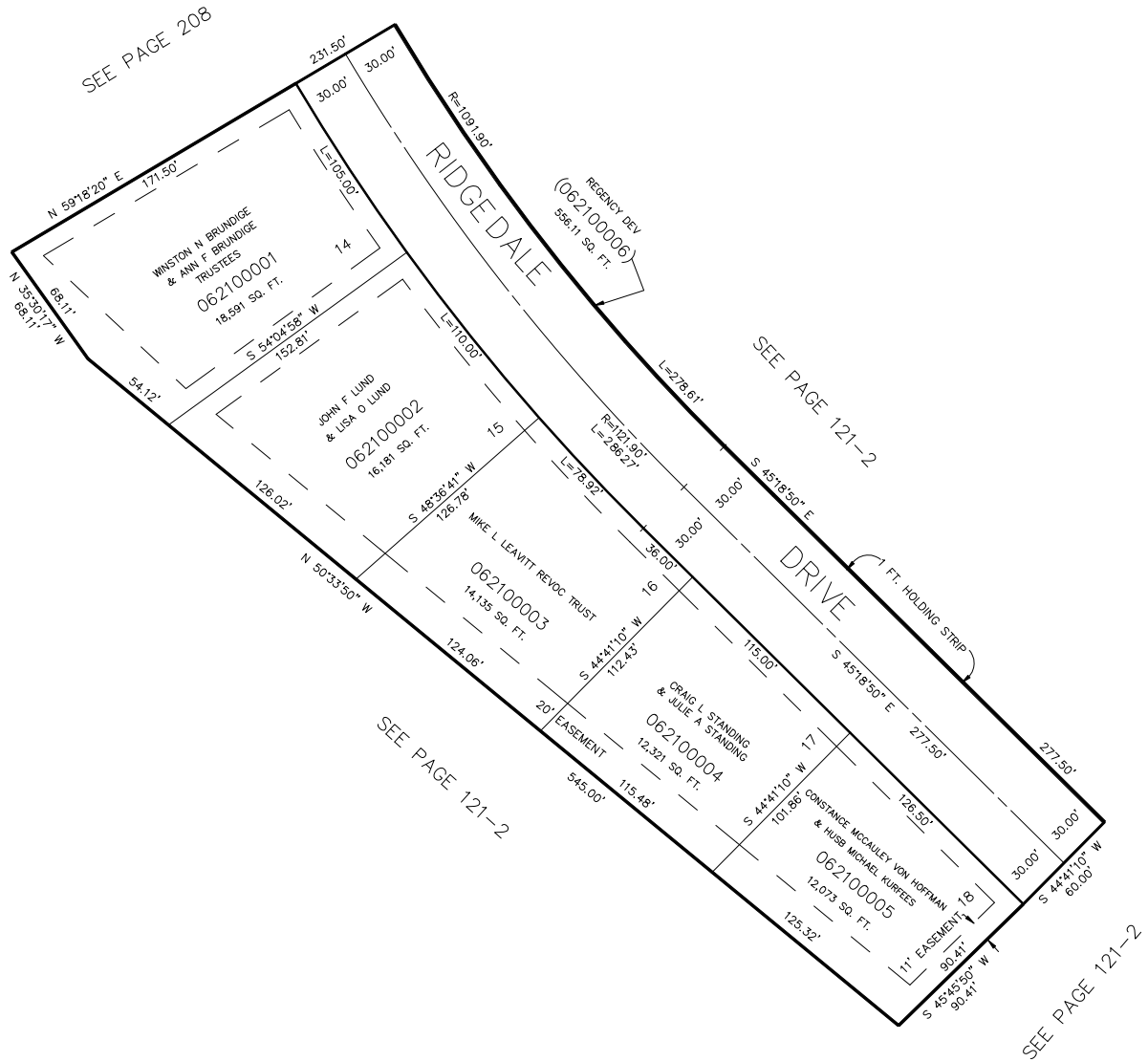
PART OF THE SW.1/4, SEC. 14, T.5N., R.1W., S.L.B. & M.
THE RIDGE AT REGENCY HEIGHTS NO. 3

210

IN OGDEN CITY

SCALE 1" = 50'

TAXING UNIT: 25



10' UTILITY & DRAINAGE EASEMENTS EACH
 SIDE OF PROPERTY LINES AS INDICATED
 BY DASHED LINES EXCEPT AS OTHERWISE
 SHOWN.

FOR COMPLETE ENG DATA SEE
 ORIGINAL DEDICATION PLAT IN
 BOOK 34, PAGE 42 OF RECORDS

FOR TAX PURPOSES ONLY

KBR 07-92