

PART OF THE S.E. 1/4, SEC. 9, T.5N., R.1W., S.L.B. & M.

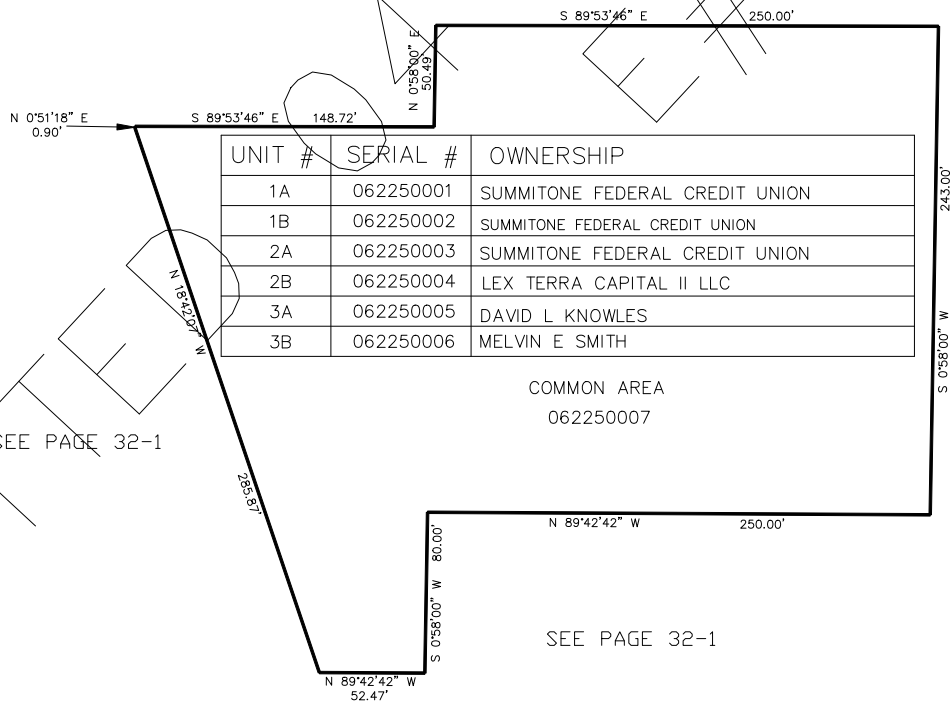
225

MCKAY-DEE PROFESSIONAL PLAZA

IN OGDEN CITY
SCALE 1" = 50'

TAXING UNIT: 25

SEE PAGE 32-1



SEE PAGE 32-1

SEE PAGE 32-1

FOR COMPLETE ENG DATA SEE
ORIGINAL DEDICATION PLAT IN
BOOK 38, PAGES 94 & 95
OF RECORDS.