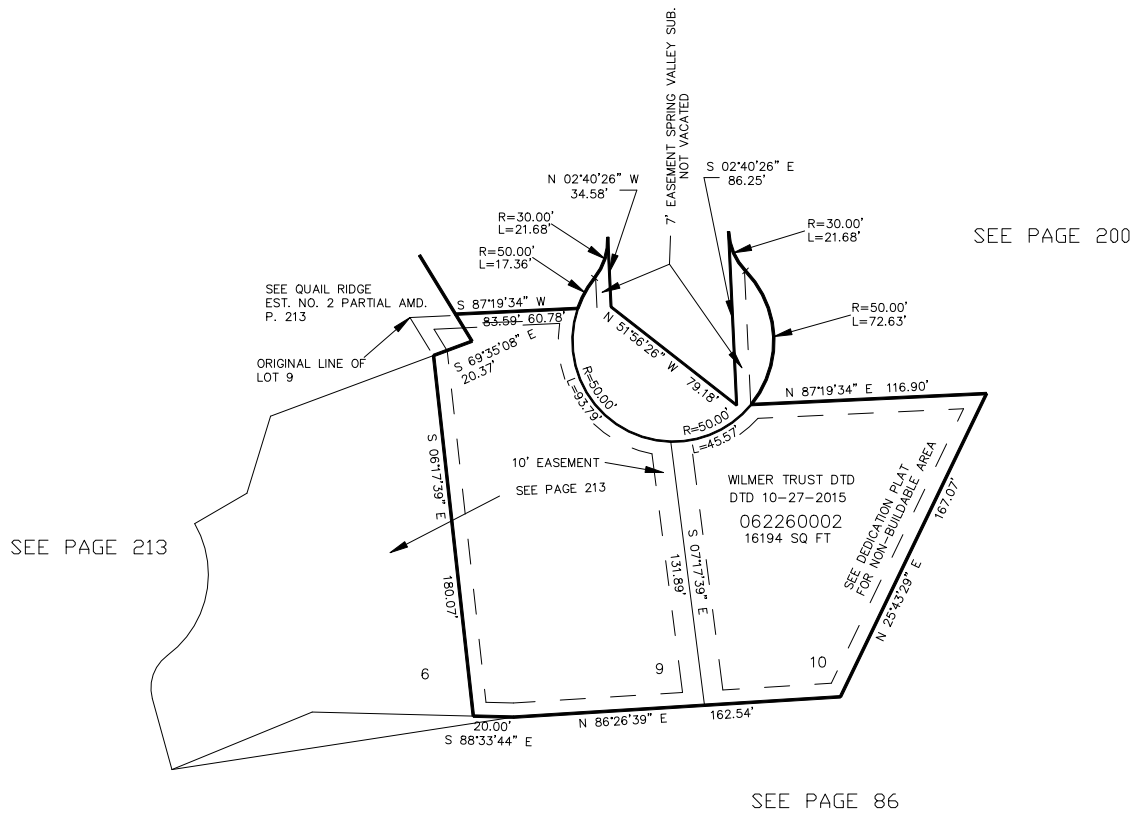


PART OF THE N.E. 1/4, SEC. 10, T.5N., R.1W., S.L.B. & M.  
**QUAIL RIDGE ESTATES NO. 3**

226

IN OGDEN CITY  
 SCALE 1" = 50'

TAXING UNIT: 25



7' UTILITY & DRAINAGE EASEMENTS EACH SIDE OF PROPERTY LINES AS INDICATED BY DASHED LINES EXCEPT AS OTHERWISE SHOWN.

FOR COMPLETE ENG DATA SEE ORIGINAL DEDICATION PLAT IN BOOK 39, PAGE 14 OF RECORDS.