

PART OF THE N.E. 1/4, SEC. 9, T.5N., R.1W., S.L.B. & M.

233

# HERITAGE PLACE

A P.R.U.D.

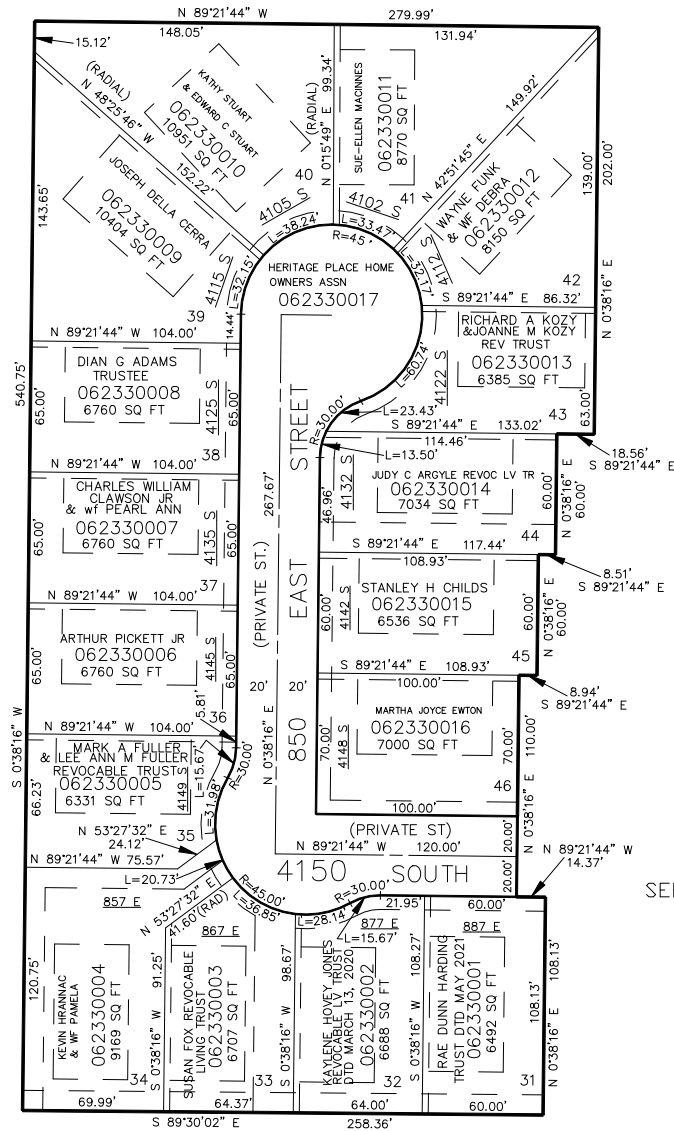
PHASE NO. 2

IN SOUTH OGDEN CITY

SCALE 1" = 50'

TAXING UNIT: 27

SEE PAGE 74



SEE PAGE 223

SEE PAGE 50

SEE PAGE 224

7' UTILITY & DRAINAGE EASEMENTS  
3' PRIVATE EASEMENTS EACH SIDE OF  
PROPERTY LINES AS INDICATED BY  
DASHED LINES EXCEPT AS OTHERWISE  
SHOWN.

SEE PAGE 53

BUILDING ENVELOPES ARE 37' WIDE  
AND 67' DEEP TYPICAL  
SEE ORIGINAL DEDICATION FOR  
DETAILED DIMENSIONS.

FOR COMPLETE ENG DATA SEE  
ORIGINAL DEDICATION PLAT IN  
BOOK 40, PAGE 10 OF RECORDS.

\*SEE CORRECTION AFFT.  
BOOK 1799 PAGE 2758  
E#1397859

\*FOR TAX PURPOSES ONLY\*

BMO 6-95