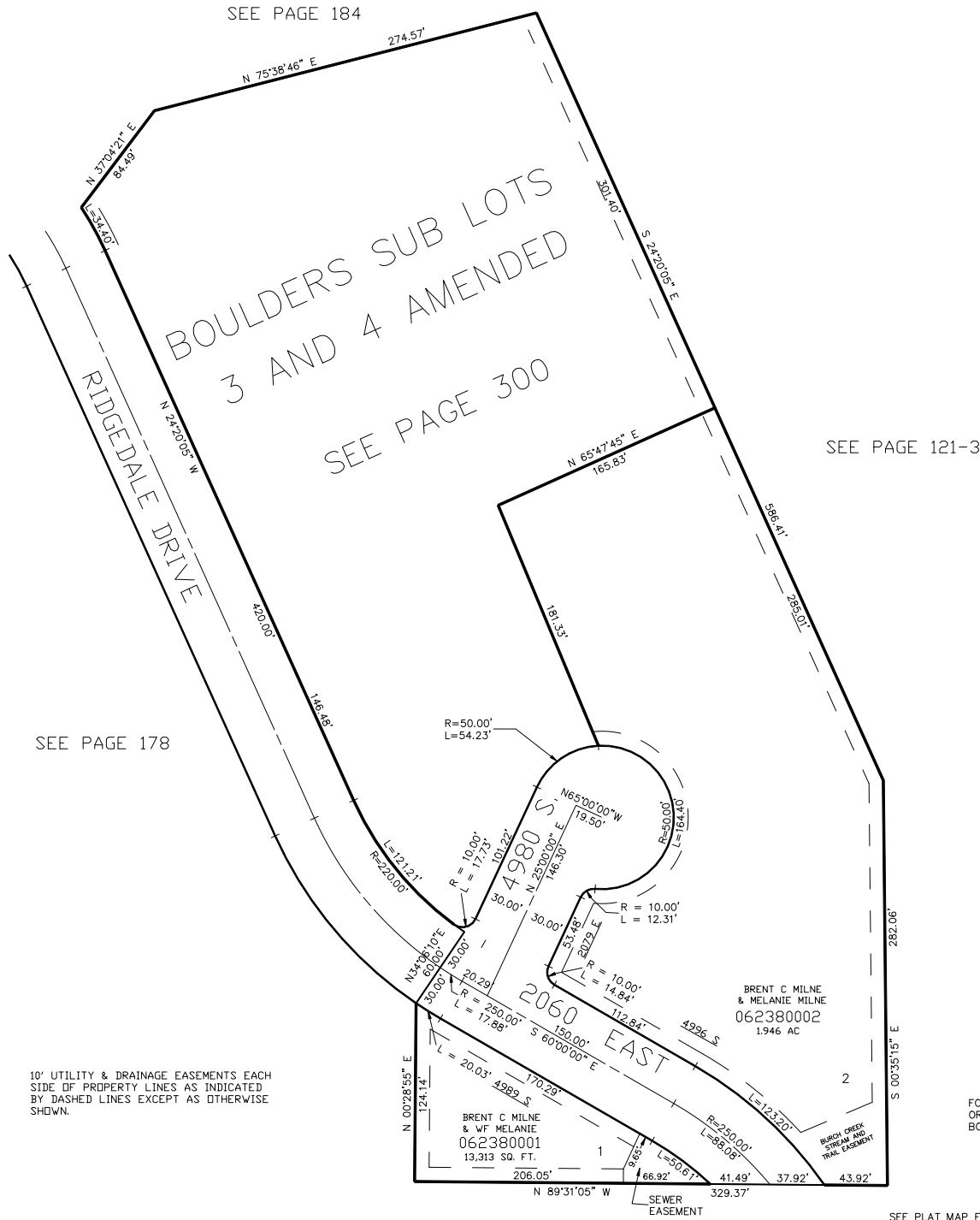


PART OF THE N.W. 1/4 OF SEC. 14, T.5N., R.1W., S.L.B. & M.
THE BOULDERS SUBDIVISION

IN OGDEN CITY
SCALE 1" = 60'

TAXING UNIT: 25



SEE PAGE 121-3

FOR TAX PURPOSES ONLY

SEE PLAT MAP FOR BUILDABLE
AREAS AND FIRE PROTECTION
SPRINKLER SYSTEM REQUIREMENTS.

FOR COMPLETE ENG DATA SEE
ORIGINAL DEDICATION PLAT IN
BOOK 41, PAGE 67 OF RECORDS.