

PART OF THE S.E. 1/4, OF SECTION 10, T.5N., R.1W., S.L.B. & M.
MOUNTAIN MEADOWS MULTIPLE UNIT CONDOMINIUM PHASE 6

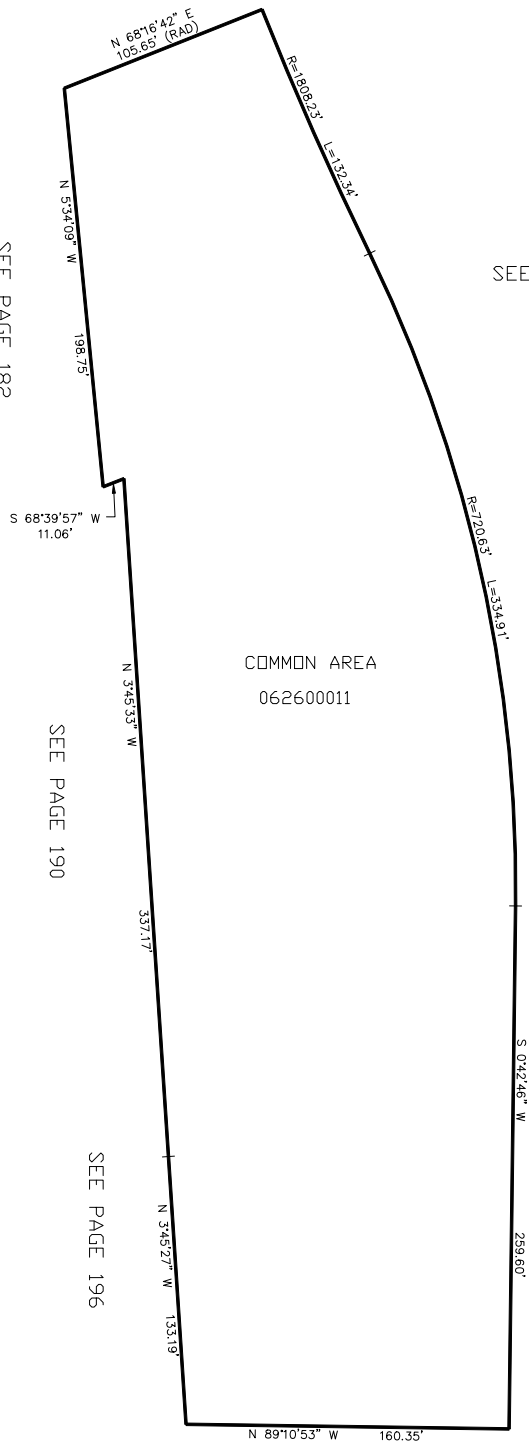
IN OGDEN CITY
SCALE 1" = 50'

TAXING UNIT: 25

SEE PAGE 222

SEE PAGE 182

SEE PAGE 245



UNIT NO.	SERIAL NO.	ADDRESS	OWNERS NAMES
1	062600001	1795 E. MEADOW CREEK LN.	ALEXIS ANN TABISH
2	062600002	1791 E. MEADOW CREEK LN.	HEIDI KAPANKA TRUST DTD 26 FEB 2016
3	062600003	1798 E. MEADOW CREEK LN.	CHLOE ANN GIBSON FAMILY TRUST
4	062600004	1790 E. MEADOW CREEK LN.	WOLFRAM FAMILY LIVING TRUST
5	062600005	4754 SO. BANBURY LANE	MONICA FRIDBERG
6	062600006	4751 SO. SKYLINE PARKWAY	DANALYNN HENNEBERGER
7	062600007	4743 SO. SKYLINE PARKWAY	LYNN M PAULSON FAMILY TRUST AGRMNT =1/2 ETAL
8	062600008	4744 SO. BANBURY LANE	DAREN L BELL & WF TIFFANY CLAUDINE
9	062600009	4729 SO. SKYLINE PARKWAY	DOUGLAS KNOWLES & WF MACHEL MORRIS
10	062600010	4717 SO. SKYLINE PARKWAY	DAVID E CHILD & WF JACQUELINE S

FOR COMPLETE ENG DATA SEE
ORIGINAL DEDICATION PLAT IN
BOOK 45, PAGE 2 OF RECORDS.

SEE PAGE 96

FOR TAX PURPOSES ONLY

PW 7-97