

PART OF THE S. 1/2, OF SEC. 10, T.5N., R.1W., S.L.B. & M.
THE POINTE AT STONE MOUNTAIN PRUD PHASE 1

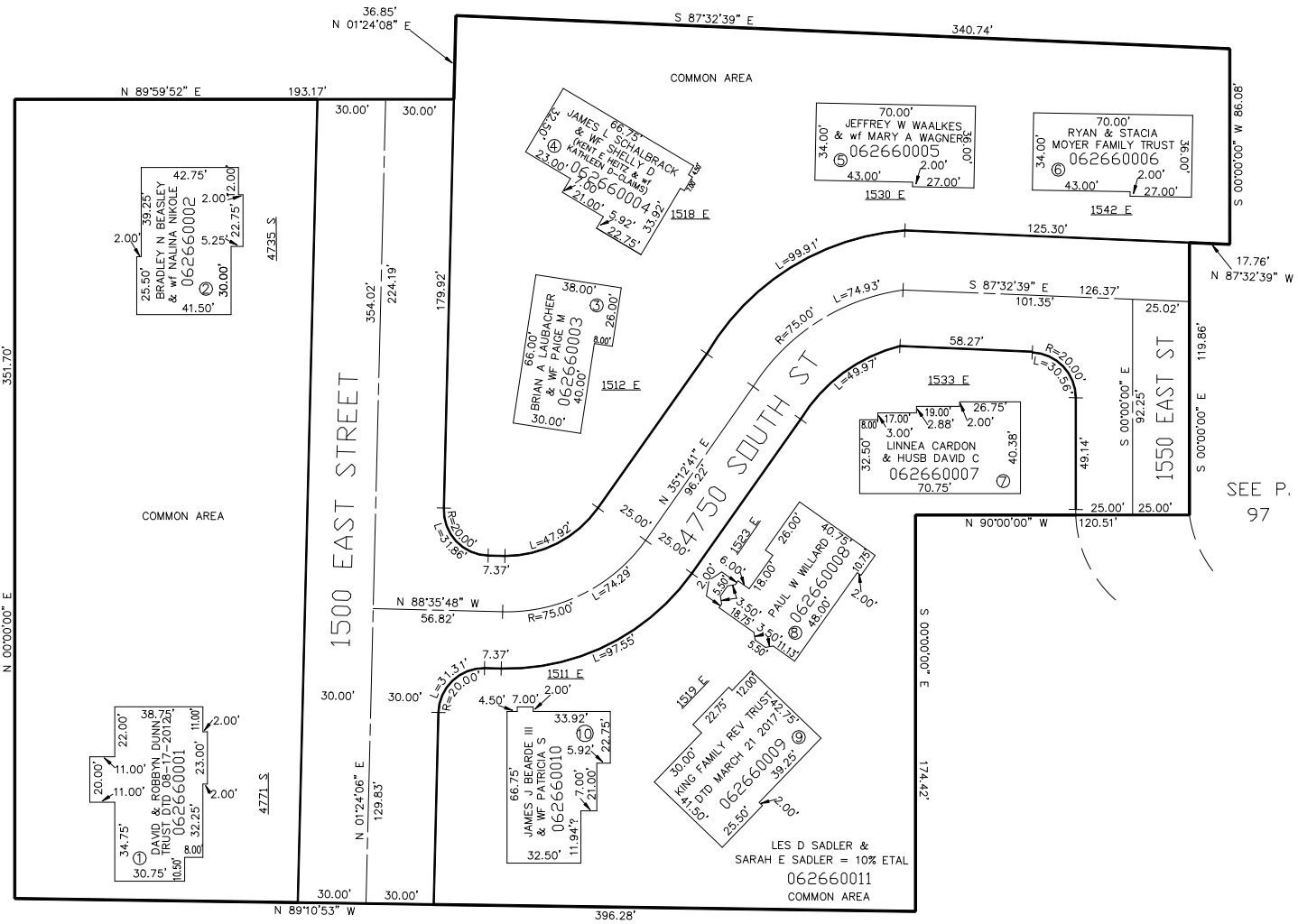
IN OGDEN CITY
SCALE 1" = 40'

TAXING UNIT: 25

SEE PAGE 220

SEE P.
97

SEE P.
97



FOR COMPLETE ENG DATA SEE
ORIGINAL DEDICATION PLAT IN
BOOK 47, PAGE 74 OF RECORDS.

SEE PAGE 97

FOR 10' WIDE FLOOD PLAIN
SEE DEDICATION PLAT