

PART N.W. 1/4 OF SEC. 7, T.5N., R.1W., & N.E. 1/4 OF SEC. 12, T.5N., R.2W., S.L.B. & M.

268

# WILD RIVER ESTATES

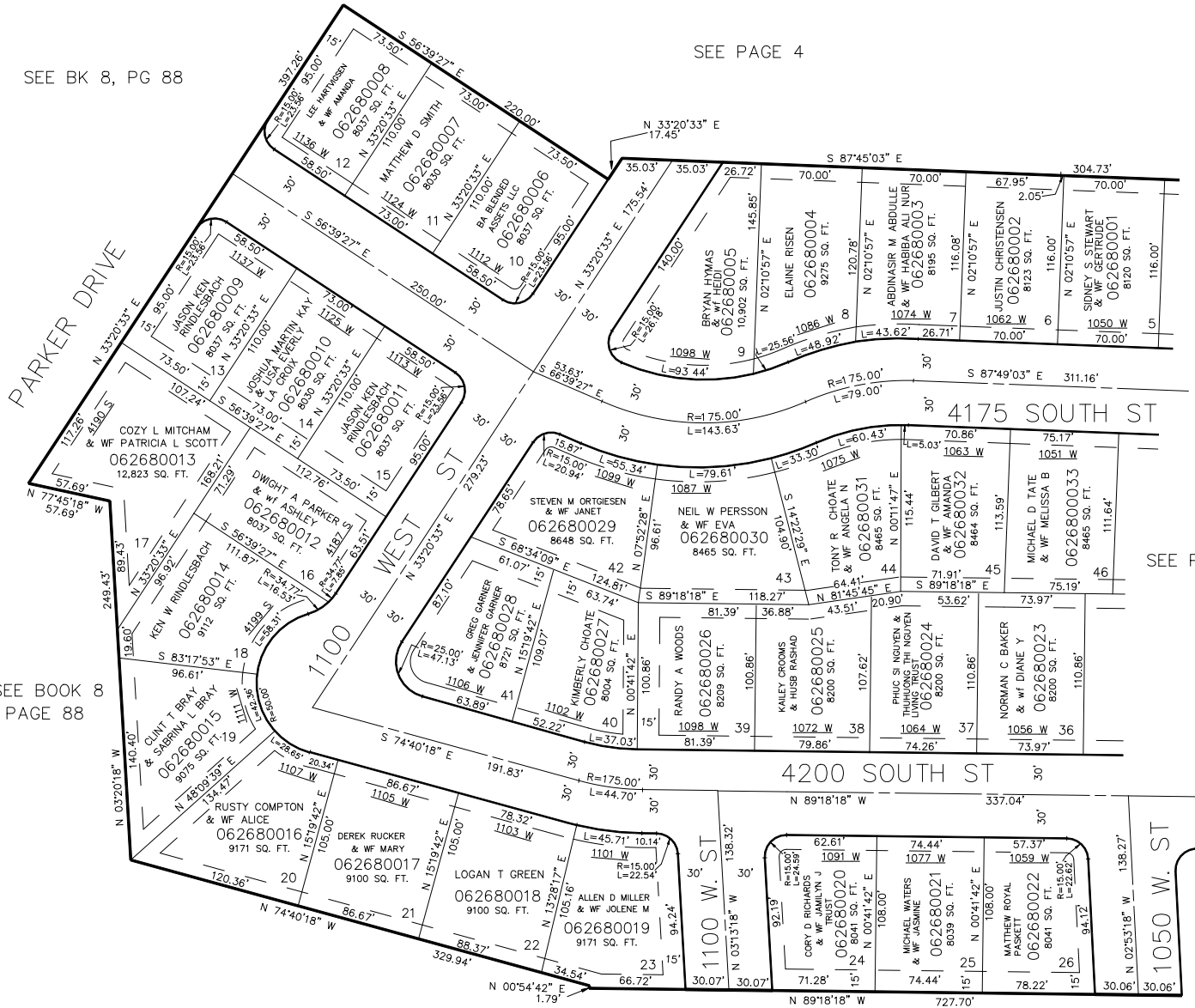
IN RIVERDALE CITY

TAXING UNIT: 26

SCALE 1" = 60'

SEE BK 8, PG 88

SEE PAGE 4



SEE PAGE 269

SEE PAGE 4

FOR COMPLETE ENG DATA SEE ORIGINAL DEDICATION PLAT IN BOOK 48, PAGE 83 OF RECORDS.

\*FOR TAX PURPOSES ONLY\*

KBR 2-99