

PART OF THE NW. 1/4 SEC. 7, T.5N., R.1W.
& PART OF THE NE. 1/4 SECTION 12, T.5N., R.2W., S.L.B. & M.

WILD RIVER ESTATES

TAXING UNIT: 26

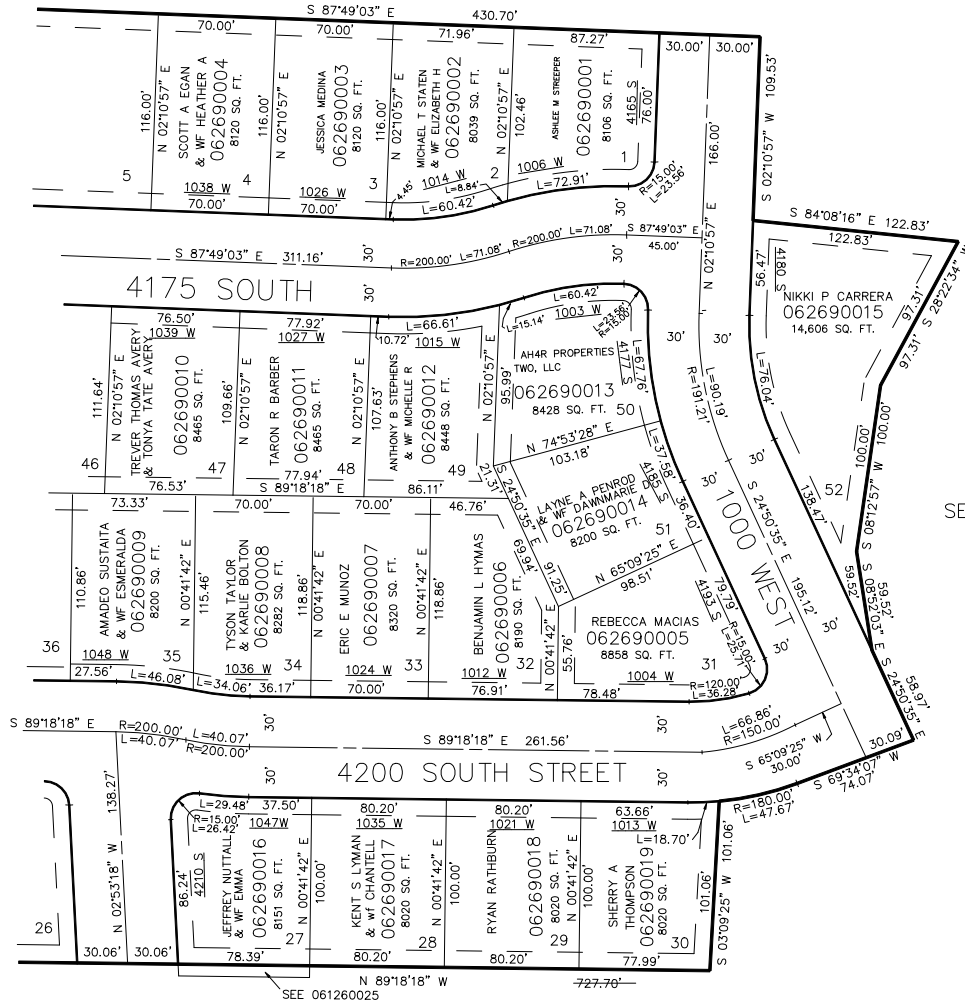
IN RIVERDALE CITY

SCALE 1" = 60'

SEE PAGE 4

SEE PAGE 268

SEE PAGE 4



SEE PAGE 4

FOR COMPLETE ENG DATA SEE
ORIGINAL DEDICATION PLAT IN
BOOK 48, PAGE 83 OF RECORDS.

10' UTILITY & DRAINAGE EASEMENTS EACH
SIDE OF PROPERTY LINES AS INDICATED
BY DASHED LINES EXCEPT AS OTHERWISE
SHOWN.

FOR TAX PURPOSES ONLY