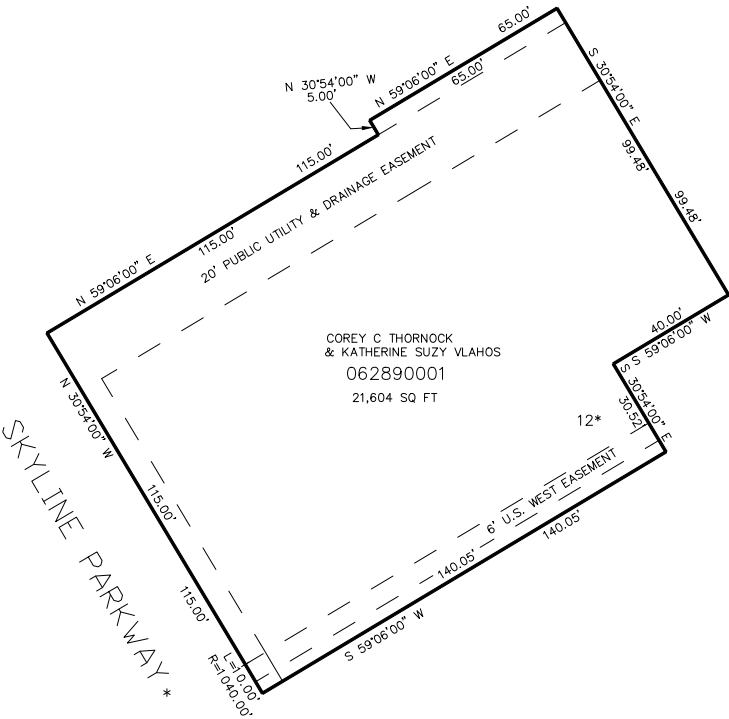


PART OF THE NE.1/4, OF SECTION 10, T.5N., R.1W., S.L.B. & M.
AMENDED LOTS 12 AND 13, OAK VIEW ESTATES PHASE ONE

TAXING UNIT: 25

IN OGDEN CITY
SCALE 1" = 30'

SEE PAGE 181



SEE PAGE 216

SEE PAGE 181

*FOR ALL OTHER EASEMENT AND LOT INFORMATION SEE DED. PLAT

*STREET NAME CHANGED
PER ORDINANCE NO. 97-4
E#2379405 10-DEC-08.

SEE PAGE 86

10' UTILITY & DRAINAGE EASEMENTS EACH
SIDE OF PROPERTY LINES AS INDICATED
BY DASHED LINES EXCEPT AS OTHERWISE
SHOWN.

FOR COMPLETE ENG DATA SEE
ORIGINAL DEDICATION PLAT IN
BOOK 59, PAGE 30 OF RECORDS.