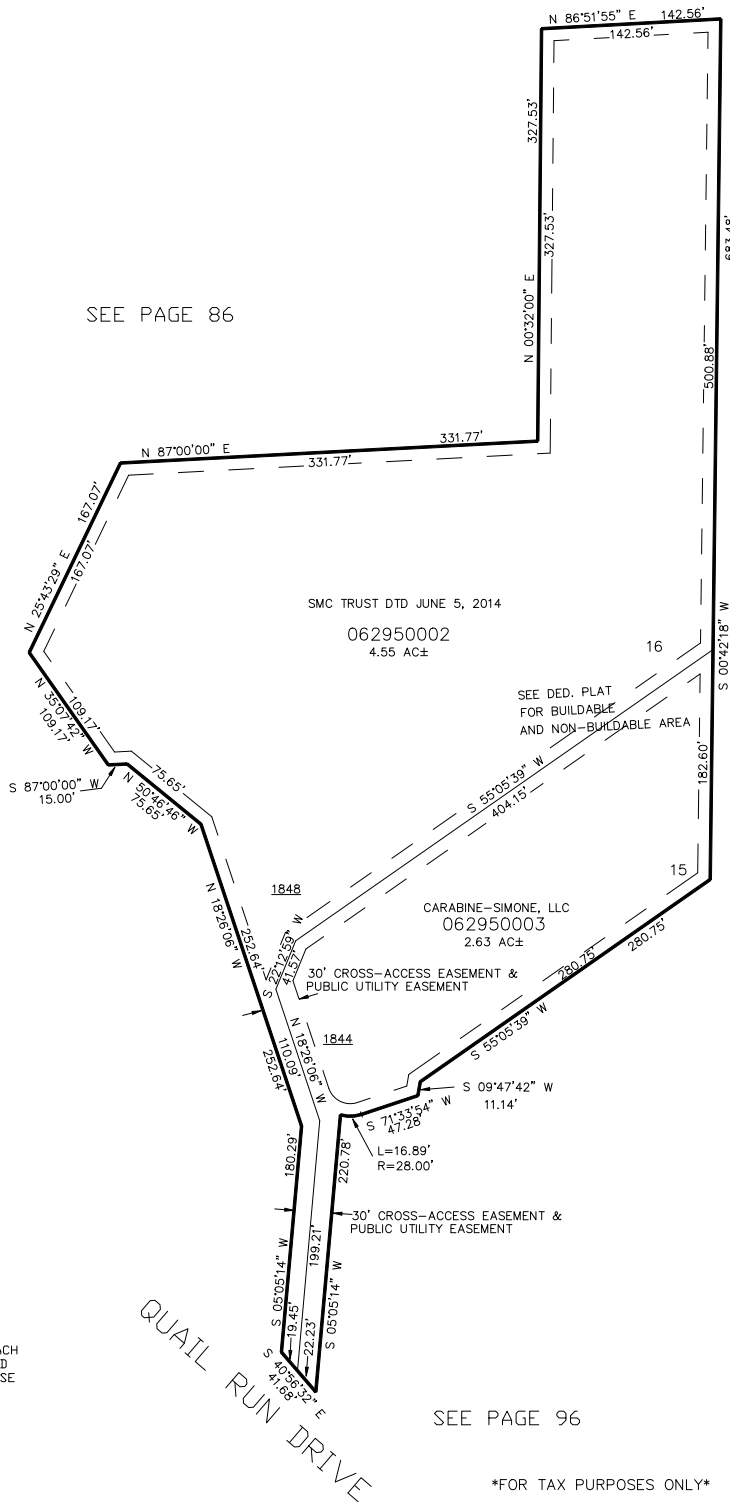


PART OF THE EAST 1/2, OF SECTION 10, T.5N., R.1W., S.L.B. & M.
QUAIL RIDGE ESTATES PHASE #7

IN OGDEN CITY
 SCALE 1" = 80'

TAXING UNIT: 25



SEE PAGE 86

SEE PAGE 86

SEE PAGE 96

FOR COMPLETE ENG DATA SEE
 ORIGINAL DEDICATION PLAT IN
 BOOK 60, PAGE 35 OF RECORDS.

10' UTILITY & DRAINAGE EASEMENTS EACH
 SIDE OF PROPERTY LINES AS INDICATED
 BY DASHED LINES EXCEPT AS OTHERWISE
 SHOWN.

FOR TAX PURPOSES ONLY