

PART OF THE SE.1/4, OF SECTION 10, T.5N., R.1W., S.L.B. & M.

REFLECTION RIDGE

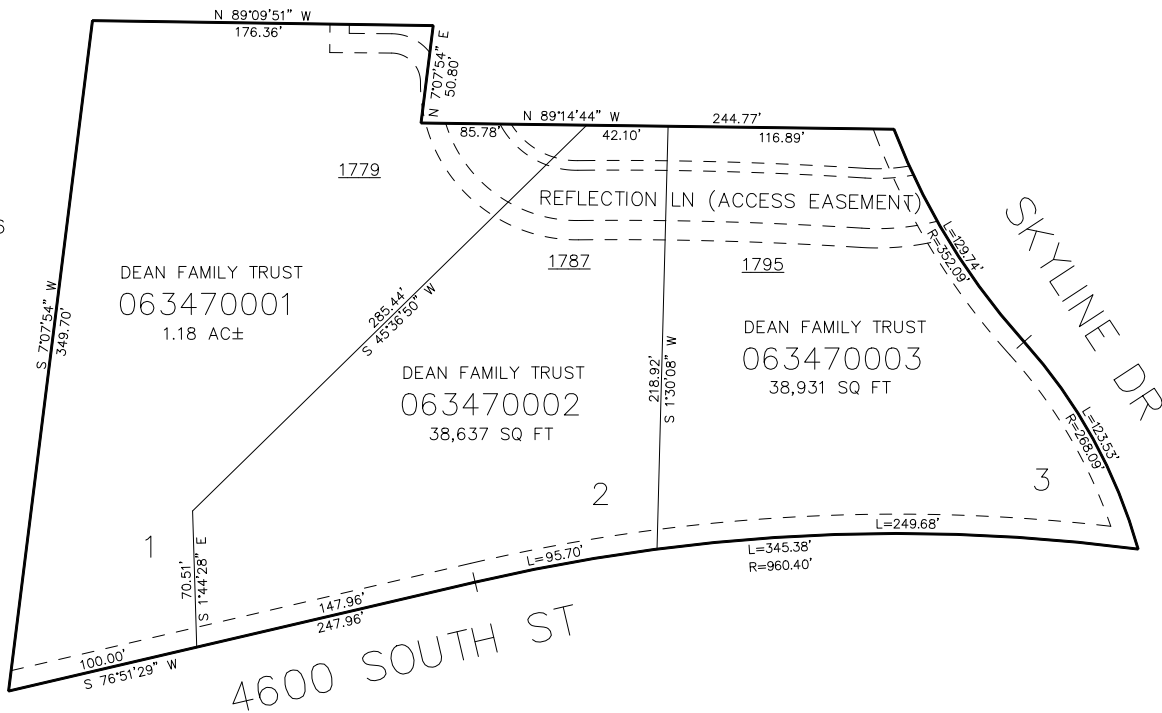
IN OGDEN CITY

TAXING UNIT: 25

SCALE 1" = 50'

SEE PAGE 96

SEE PAGE 96



SEE PAGE 96

SEE PAGE 96

10' UTILITY & DRAINAGE EASEMENTS EACH
SIDE OF PROPERTY LINES AS INDICATED
BY DASHED LINES EXCEPT AS OTHERWISE
SHOWN.

FOR COMPLETE ENC DATA SEE
ORIGINAL DEDICATION PLAT IN
BOOK 92, PAGE 48 OF RECORDS.