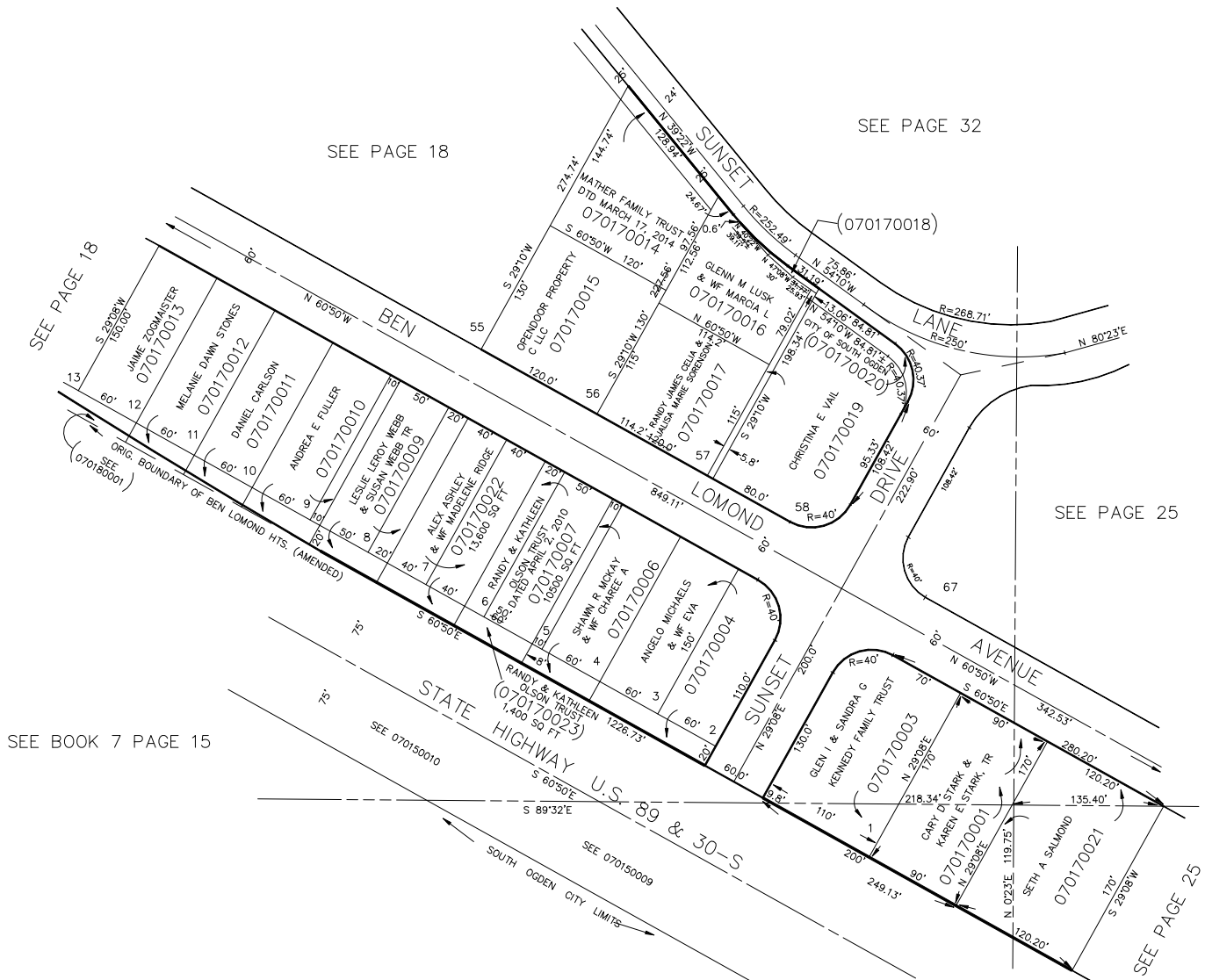


PART OF SEC. 16, T.5N., R.1W., S.L.B. & M.

17

AMENDED PLAT OF  
BEN LOMOND HEIGHTS  
LOTS 1 TO 12 & 56 TO 58  
IN SOUTH OGDEN CITY  
SCALE 1" = 80'

TAXING UNIT: 27



\*FOR TAX PURPOSES ONLY\*

JAB 5-89