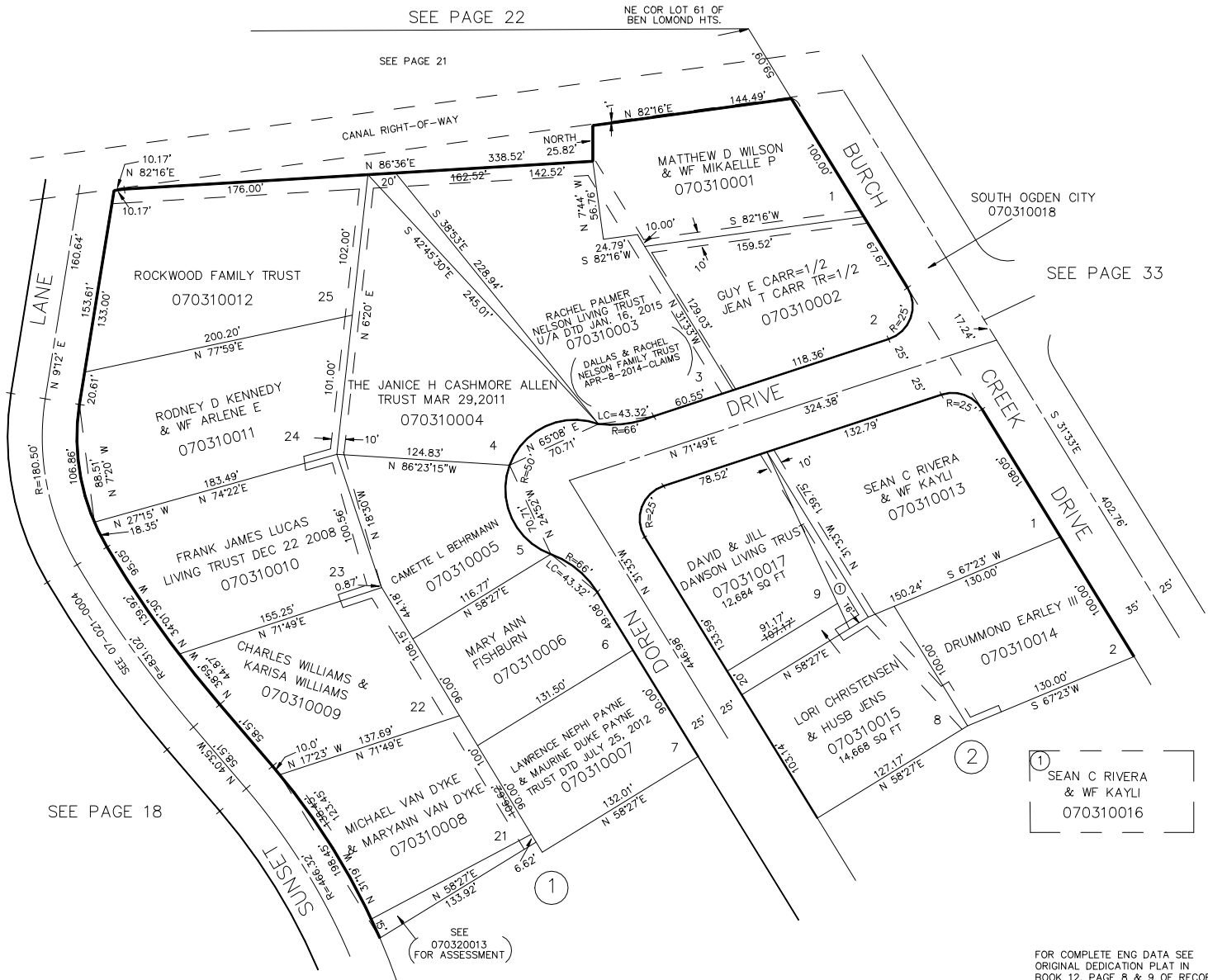


PART OF NW 1/4, SEC. 16, T.5N., R.1W., S.L.B. & M.
 PART OF LOTS 59,60 & 61, AMENDED PLAT OF BEN LOMOND HEIGHTS
KAMMEYER ADDITION

PART OF BLOCKS 1 & 2
 IN SOUTH OGDEN CITY
 SCALE 1" = 60'

TAXING UNIT: 27

31



7' UTILITY & DRAINAGE EASEMENTS EACH
 SIDE OF PROPERTY LINES AS INDICATED
 BY DASHED LINES EXCEPT AS OTHERWISE
 SHOWN.

FOR COMPLETE ENG DATA SEE
 ORIGINAL DEDICATION PLAT IN
 BOOK 12, PAGE 8 & 9 OF RECORDS.

SEE PAGE 32

FOR TAX PURPOSES ONLY

KST 5-89