

PART OF S 1/2 SEC. 17, T.5N., R.1W., S.L.B. & M.  
**SOUTHRIDGE SUBDIVISION NO.5**  
LOTS 94-101

IN WASHINGTON TERRACE CITY

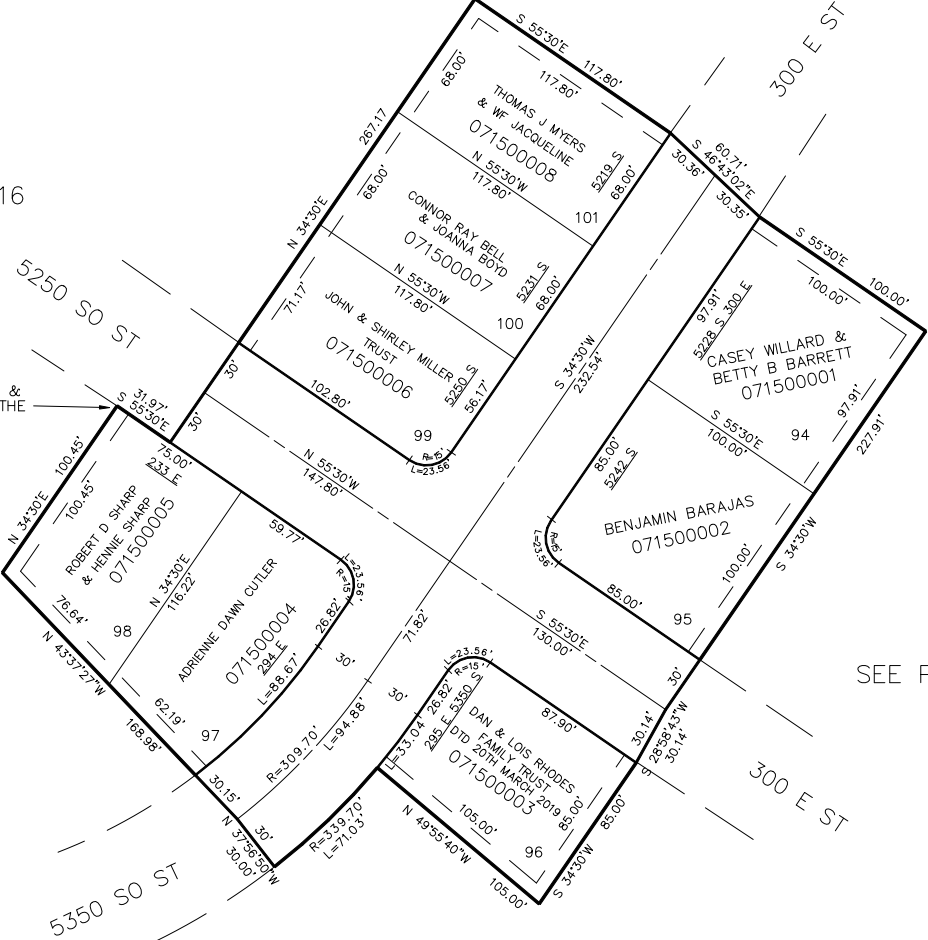
TAXING UNIT: 24

SCALE 1"=50'

SEE PAGE 117

SEE PAGE 116

S 89°36'43"E 3239.46' &  
SOUTH 438.08' FROM THE  
W 1/4 COR SEC 17



SEE PAGE 148

7' UTILITY & DRAINAGE EASEMENTS  
EACH SIDE OF PROPERTY LINES AS  
INDICATED BY DASHED LINES.

FOR COMPLETE ENG. DATA  
SEE ORIG. DED. PLAT IN  
BOOK 17, PAGE 22.

SEE PAGE 148

\*FOR TAX PURPOSES ONLY\*