

PART OF N.E. 1/4 SEC. 23, T.5N., R.1W., S.L.B. & M.  
**WOODLAND HILLS SUBDIVISION NO. 1**

LOTS 7-13  
 IN WEBER COUNTY  
 SCALE 1" = 60'

TAXING UNIT: 159

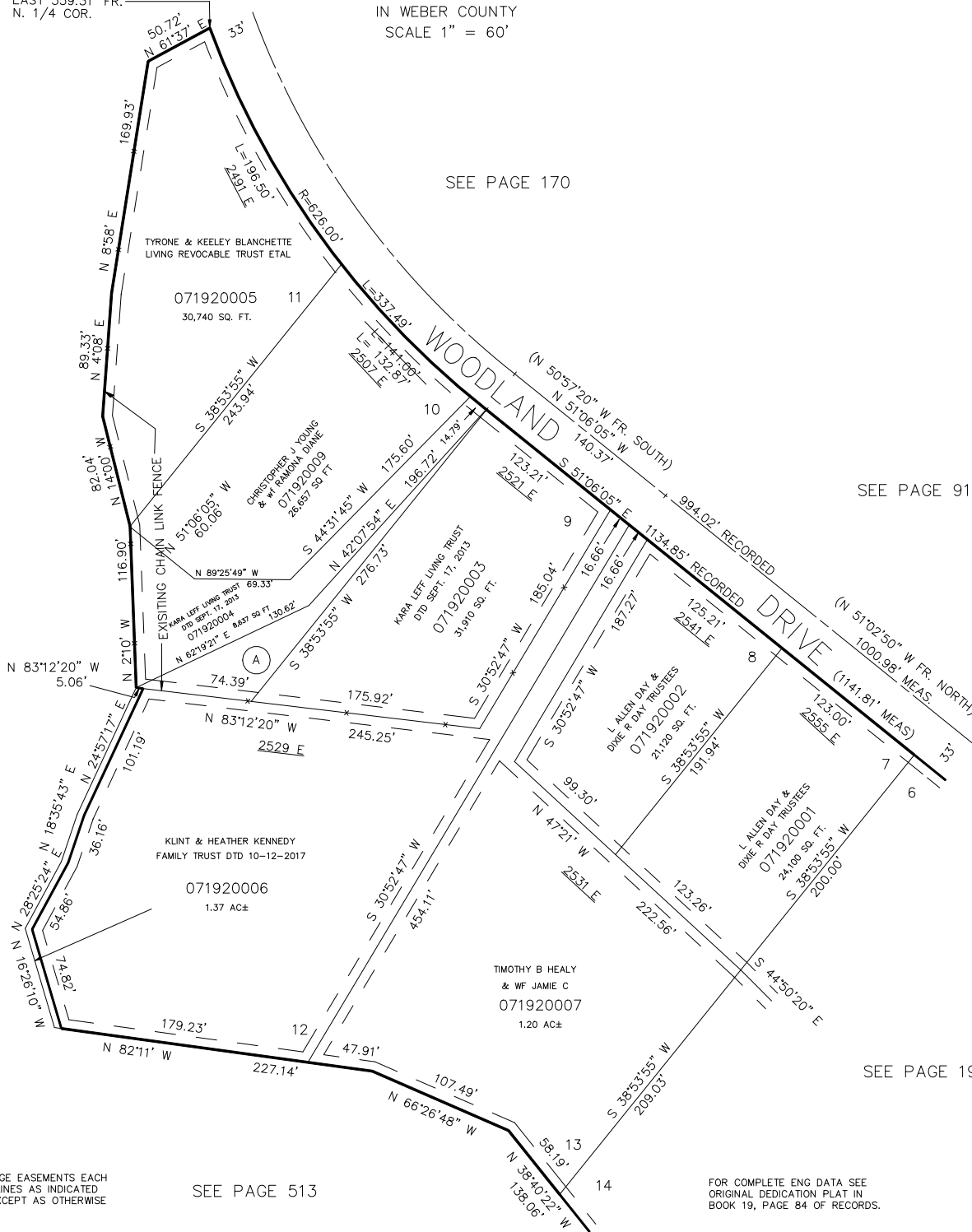
SOUTH 759.31' &  
 EAST 559.31' FR.  
 N. 1/4 COR.

SEE PAGE 170

SEE PAGE 91

SEE PAGE 513

(A)  
 KARA LEFF LIVING TRUST  
 DTD SEPT. 17, 2013  
 071920008  
 4285 SQ. FT.



SEE PAGE 191

7' UTILITY & DRAINAGE EASEMENTS EACH  
 SIDE OF PROPERTY LINES AS INDICATED  
 BY DASHED LINES EXCEPT AS OTHERWISE  
 SHOWN.

SEE PAGE 513

FOR COMPLETE ENG. DATA SEE  
 ORIGINAL DEDICATION PLAT IN  
 BOOK 19, PAGE 84 OF RECORDS.

\*FOR TAX PURPOSES ONLY\*