

PART OF SEC. 17, T.5N., R.1W., S.L.B. & M.

RIDGELINE SUBDIVISION PHASE 4

LOTS 63-65

IN WASHINGTON TERRACE CITY

SCALE 1"=60'

TAXING UNIT: 24

SEE PAGE 268

SEE PAGE 232

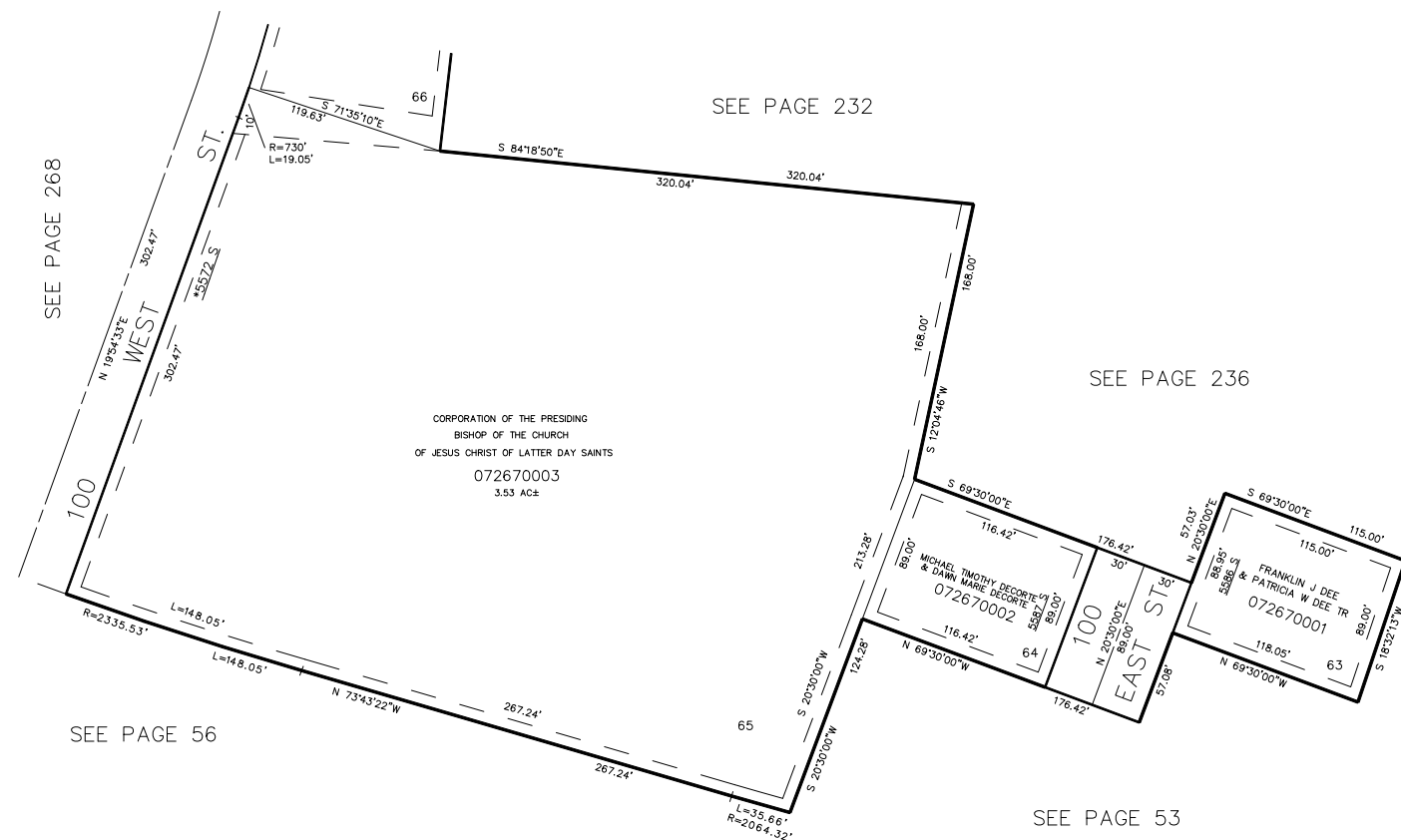
SEE PAGE 236

SEE PAGE 53

SEE PAGE 79

SEE PAGE 56

CORPORATION OF THE PRESIDING
BISHOP OF THE CHURCH
OF JESUS CHRIST OF LATTER DAY SAINTS
072670003
3.53 AC±



*ADDRESS AFFIDAVIT E#3219408

7' UTILITY & DRAINAGE EASEMENTS
EACH SIDE OF PROPERTY LINES AS
INDICATED BY DASHED LINES
EXCEPT AS OTHERWISE SHOWN.

FOR COMPLETE ENG. DATA
SEE ORIG. DED. PLAT IN
BOOK 23, PAGE 57.

FOR TAX PURPOSES ONLY