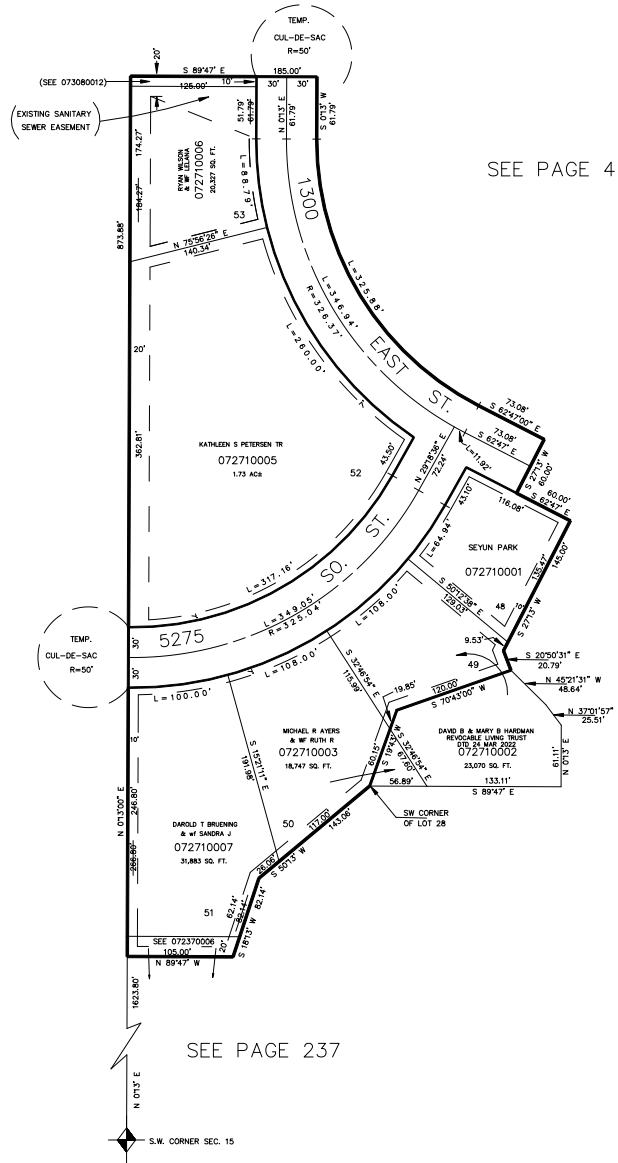


PART OF THE SW 1/4, SEC. 15, T.5N., R.1W., S.L.B. & M.  
**OAK CREEK ESTATES PHASE 5**  
 IN SOUTH OGDEN CITY  
 SCALE 1" = 100'

271

TAXING UNIT: 27

SEE PAGE 4



SEE PAGE 4

SEE PAGE 47

SEE PAGE 270

SEE PAGE 237

10' UTILITY EASEMENTS EACH SIDE OF PROPERTY LINE AS INDICATED BY DASHED LINES. ALL EASEMENTS TO BE USED FOR IRRIG. WATERLINES, DRAINAGE, SANITARY & STORM SEWERS, POWERLINES, TELEPHONE LINES & OTHER PUBLIC UTILITIES. FRONT PROPERTY LINE UTILITY ESMTS. ARE 7' WIDE. OTHER WIDTHS OF ESMTS ARE AS SHOWN.

FOR COMPLETE ENG DATA SEE ORIGINAL DEDICATION PLAT IN BOOK 23, PAGE 94 OF RECORDS.

\*FOR TAX PURPOSES ONLY\*