

PART OF E 1/2 SEC. 15, & N.W. 1/4 SEC. 14, T..5N., R.1W., S.L.B. & M.

273

SHADOW VALLEY ESTATES NO. 10

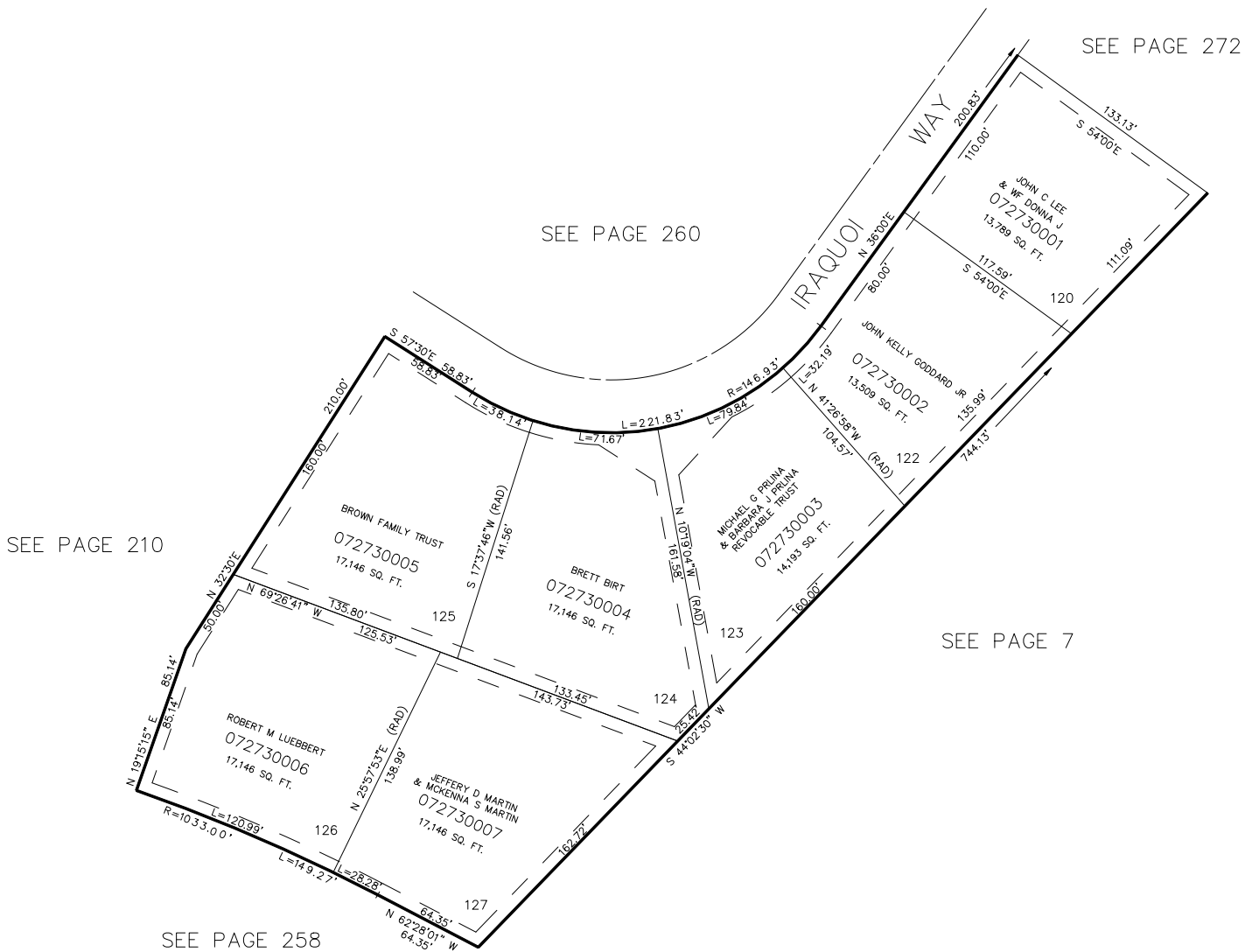
AMENDED PLAT

LOTS 120, 122 TO 127

IN OGDEN CITY

SCALE 1" = 50'

TAXING UNIT: 25



FOR COMPLETE ENG DATA SEE ORIGINAL DEDICATION PLAT IN BOOK 24, PAGE 29 OF RECORDS.

7" UTILITY & DRAINAGE EASEMENTS EACH SIDE OF PROPERTY LINE AS INDICATED BY DASHED LINES, EXCEPT AS OTHERWISE SHOWN.

FOR TAX PURPOSES ONLY