

PART OF THE E 1/2, SEC. 15, T.5N., R.1W., S.L.B. & M.
WHISPERING OAKS
 A P.R.U.D.

293

TAXING UNIT: 25

LOTS 7 TO 10, AND LOT 11 AMENDED*

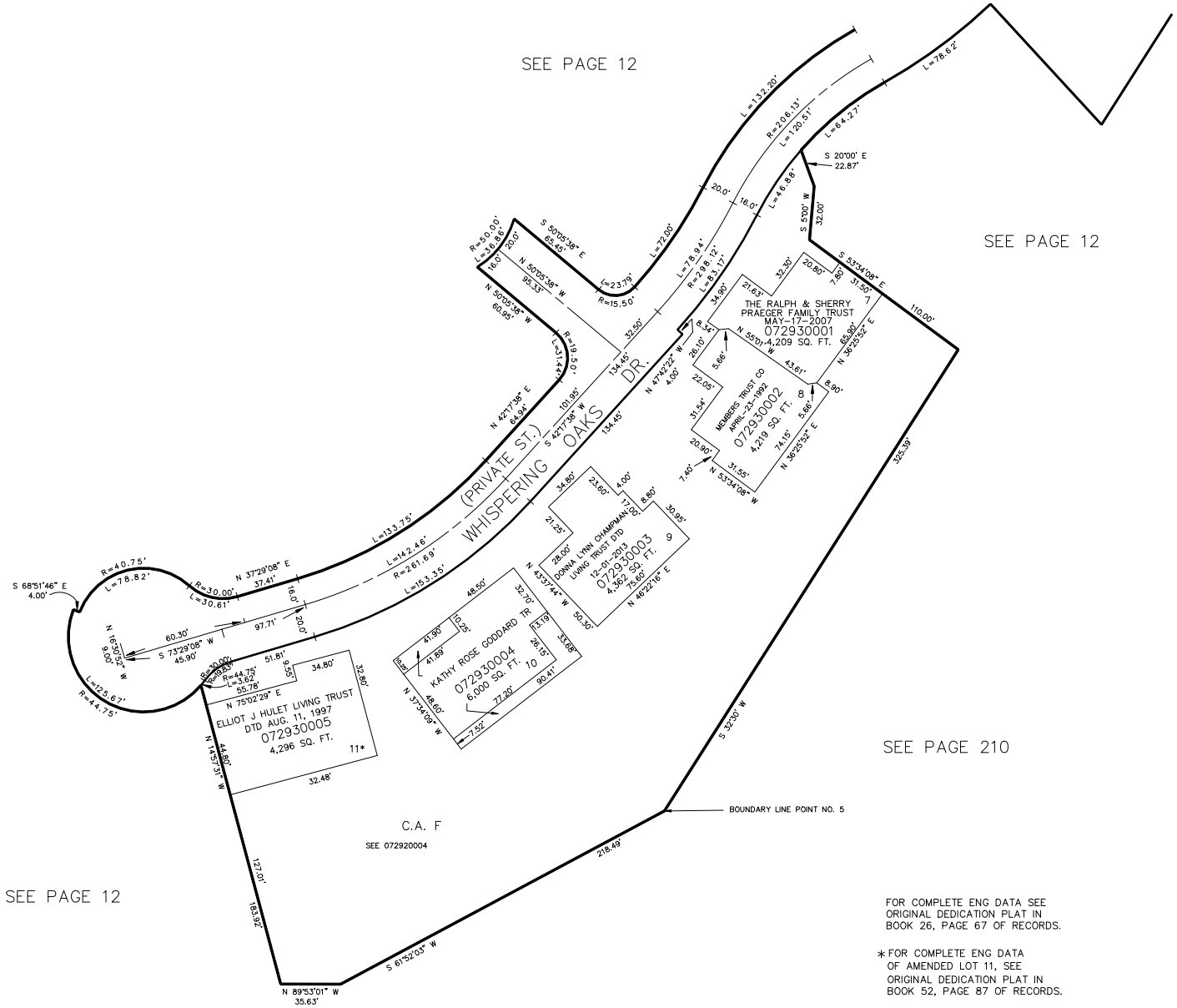
IN OGDEN CITY
 SCALE 1" = 50'

SEE PAGE 292

SEE PAGE 12

SEE PAGE 12

SEE PAGE 210



SEE PAGE 12

FOR COMPLETE ENG DATA SEE
 ORIGINAL DEDICATION PLAT IN
 BOOK 26, PAGE 67 OF RECORDS.

* FOR COMPLETE ENG DATA
 OF AMENDED LOT 11, SEE
 ORIGINAL DEDICATION PLAT IN
 BOOK 52, PAGE 87 OF RECORDS.

FOR TAX PURPOSES ONLY

JAB 3-89