

PART OF THE NE 1/4 OF SEC. 21, T.5N., R.1W., S.L.B. & M. PLEASANT VALLEY ESTATES – PHASE 8

310

LOTS 79 – 86

IN SOUTH OGDEN CITY

SCALE 1" TO 50'

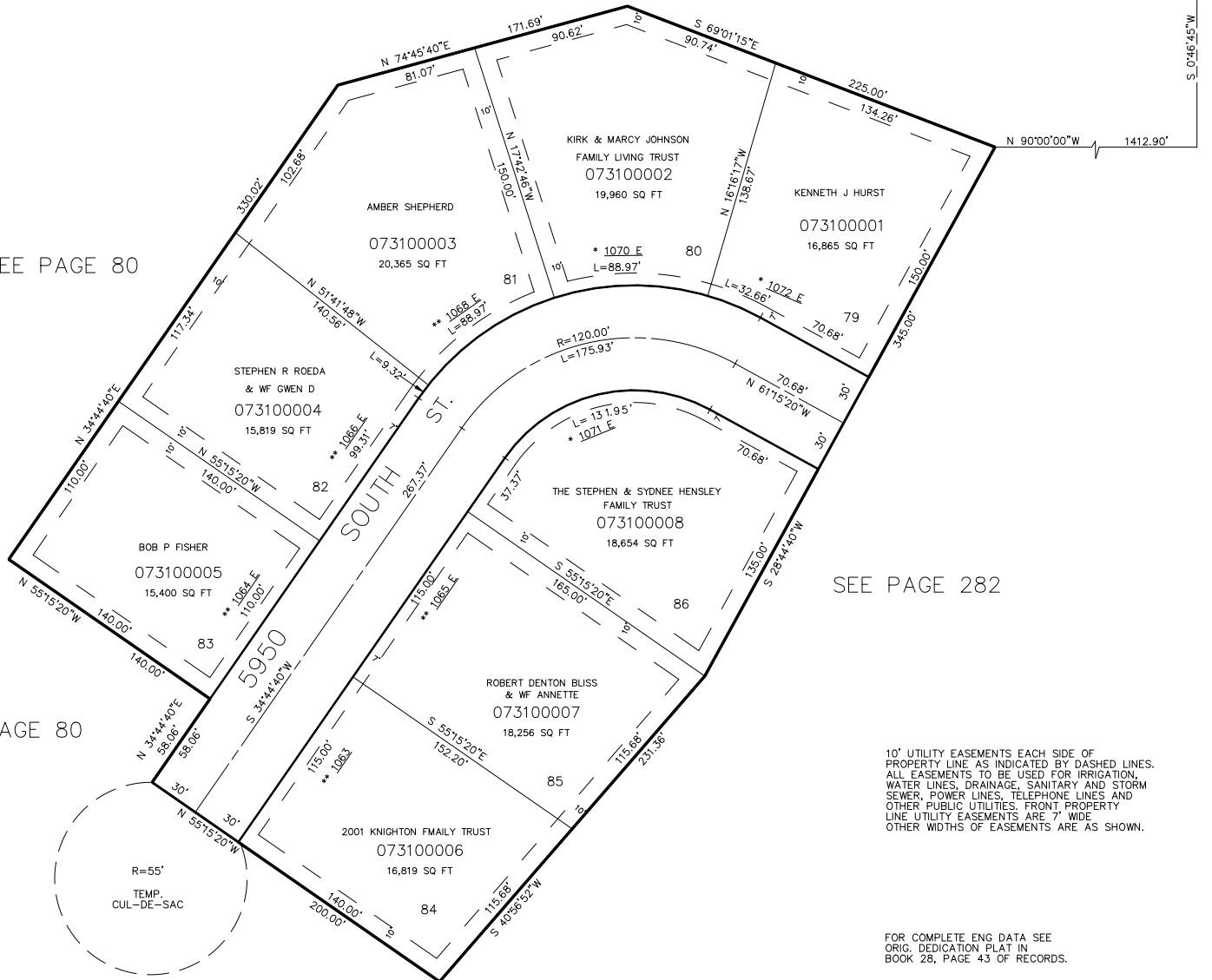
TAXING UNIT: 27

SEE PAGE 80

SEE PAGE 80

SEE PAGE 80

SEE PAGE 282



* SEE CORRECTION AFFIDAVIT
1535-1726

** SEE CORRECTION AFFIDAVIT
1536-143

*CORRECTION AFFIDAVIT
1535-1726
*CORRECTION AFFIDAVIT
1536-143

10' UTILITY EASEMENTS EACH SIDE OF
PROPERTY LINE AS INDICATED BY DASHED LINES.
ALL EASEMENTS TO BE USED FOR IRRIGATION,
WATER LINES, DRAINAGE, SANITARY AND STORM
SEWER, POWER LINES, TELEPHONE LINES AND
OTHER PUBLIC UTILITIES. FRONT PROPERTY
LINE UTILITY EASEMENTS ARE 7' WIDE.
OTHER WIDTHS OF EASEMENTS ARE AS SHOWN.

FOR COMPLETE ENG DATA SEE
ORIG. DEDICATION PLAT IN
BOOK 28, PAGE 43 OF RECORDS.

FOR TAX PURPOSES ONLY

L.D.T. 8-86