

PART OF THE N.E. 1/4 OF SECTION 21, T.5N., R.1W., S.L.B. & M.

319

PAGE 320 OMITTED

SPRINGTREE PHASE 1

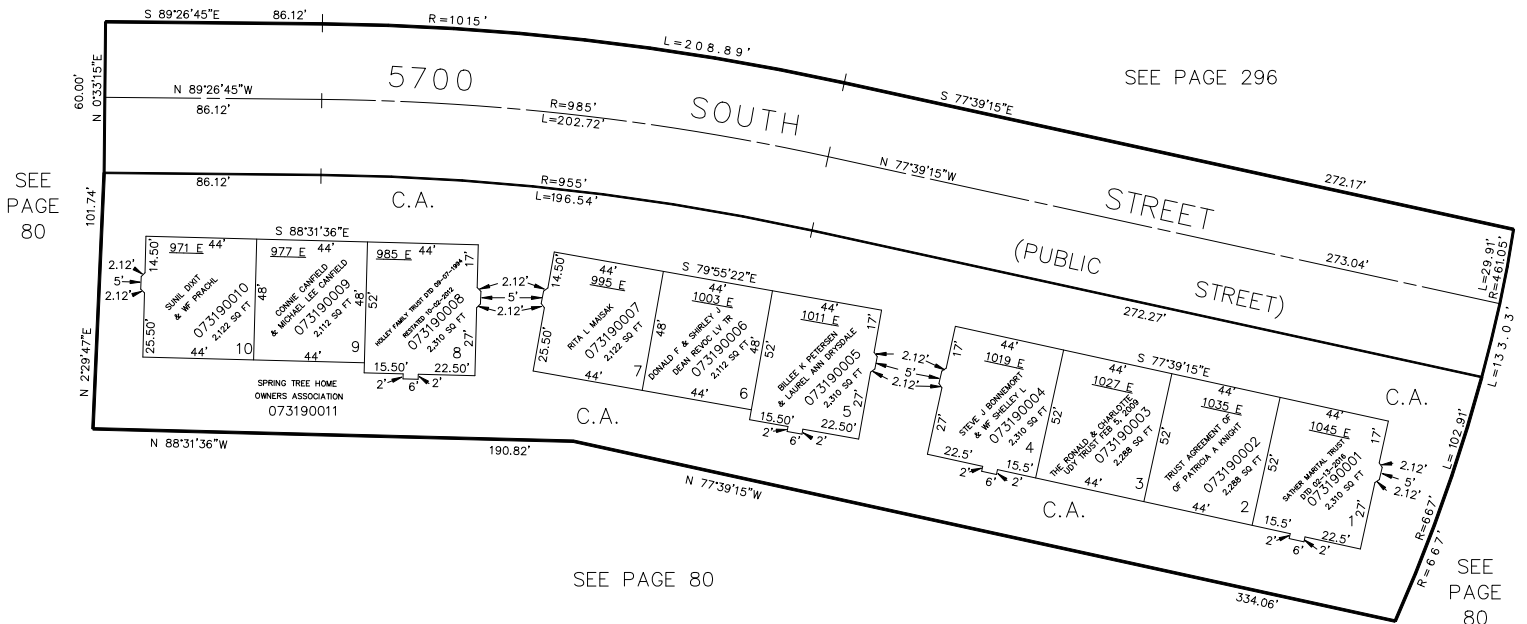
A PLANNED RESIDENTIAL UNIT DEVELOPMENT

IN SOUTH OGDEN CITY

TAXING UNIT: 27

SCALE 1"=40'

SEE PAGE 290



FOR COMPLETE ENG. DATA SEE
ORIGINAL DEDICATION PLAT IN
BOOK 29, PAGE 14 OF RECORDS.

NOTES:
ALL AREAS INCLUDING ROADWAYS (EXCEPT
PUBLIC STREETS) NOT WITHIN THE
BOUNDARIES OF THE TEN NUMBERED LOTS ARE
COMMON AREAS AND FACILITIES, CERTAIN OF
WHICH AREAS ARE MARKED 'CA' HEREON.
EACH OF THE NUMBERS 1 THRU 10 IS THE NUMBER OF A LOT IN
THE PROJECT. ALL COMMON AREA IS CONSIDERED TO BE AN EASEMENT
FOR PUBLIC UTILITIES AND DRAINAGE PURPOSES, THIS INCLUDES THE
PRIVATE STREETS.