

PART SE 1/4 SEC 23, SW 1/4 SEC 24 & NW 1/4 SEC 25, T.5N., R.1W., S.L.B. & M.

352

SPRING CREEK ESTATES SUBDIVISION NO. 2

LOTS 3 - 8

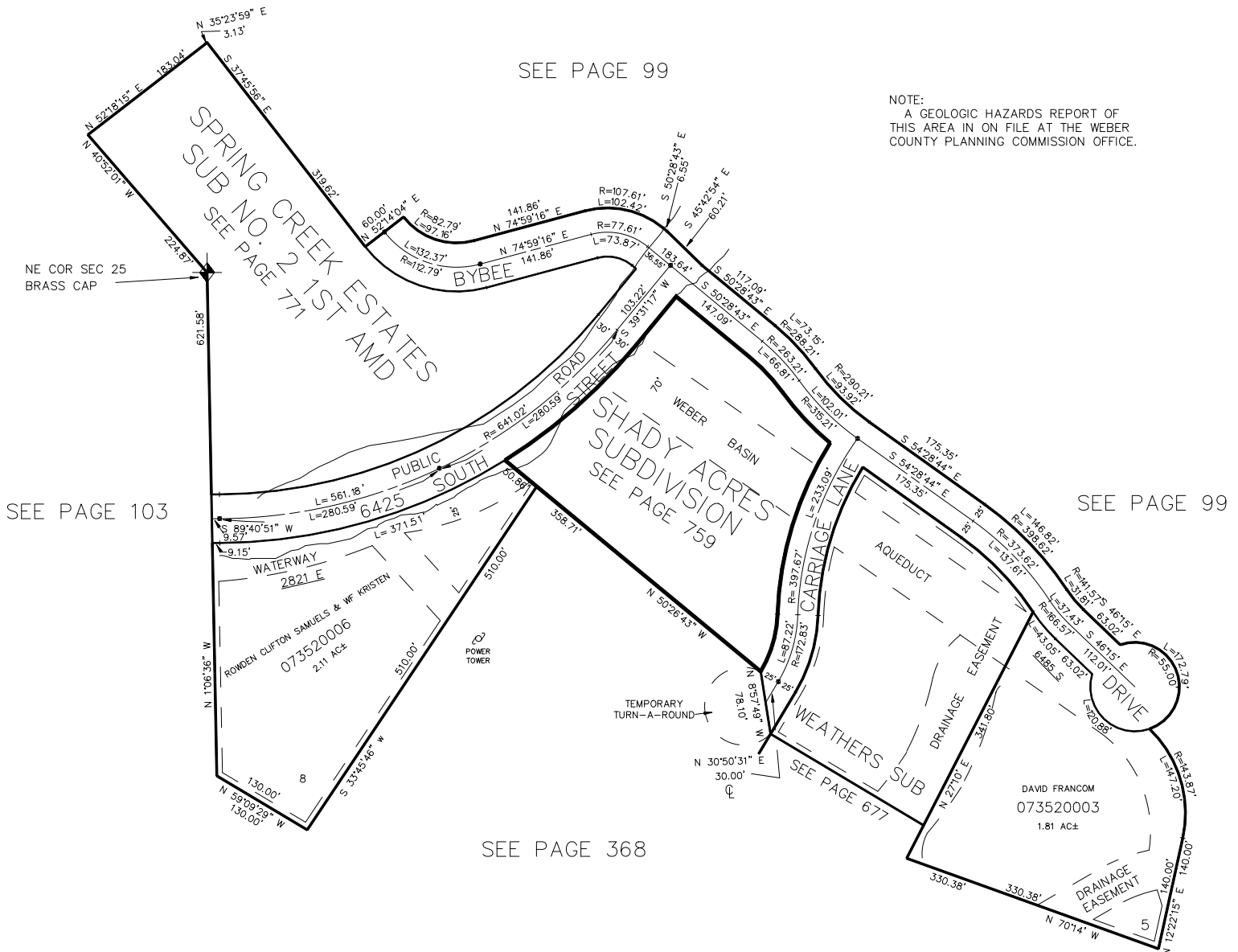
IN WEBER COUNTY

SCALE 1" = 100'

TAXING UNIT: 54

SEE PAGE 99

NOTE:
A GEOLOGIC HAZARDS REPORT OF
THIS AREA IS ON FILE AT THE WEBER
COUNTY PLANNING COMMISSION OFFICE.



SEE PAGE 103

SEE PAGE 99

SEE PAGE 368

*SEE CORRECTION AFFT.
3-25-92 (1622-160)

7' UTILITY & DRAINAGE EASEMENTS EACH
SIDE OF PROPERTY LINES AS INDICATED
BY DASHED LINES EXCEPT AS OTHERWISE
SHOWN.

FOR COMPLETE ENG DATA SEE
ORIGINAL DEDICATION PLAT IN
BOOK 30, PAGE 89 OF RECORDS.

FOR TAX PURPOSES ONLY

L.D.F. 9-88