

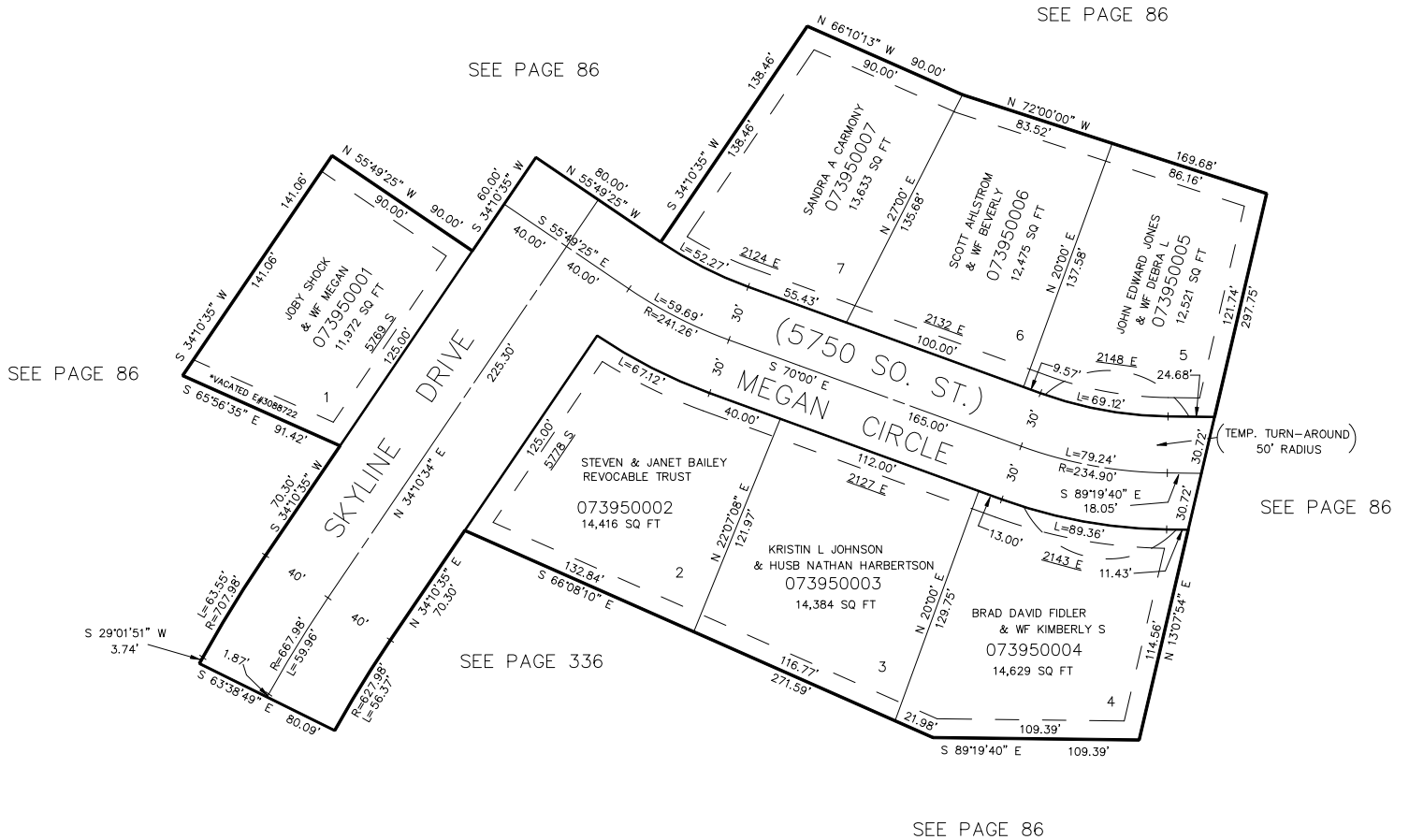
PART OF THE NW 1/4, SEC. 23, T.5N., R.1W., S.L.B. & M.  
**HIGHLAND COVE ESTATES SUBDIVISION**

395

IN WEBER COUNTY

TAXING UNIT: 159

SCALE 1" = 50'



10' UTILITY & DRAINAGE EASEMENTS EACH  
 SIDE OF PROPERTY LINES AS INDICATED  
 BY DASHED LINES EXCEPT AS OTHERWISE  
 SHOWN.

FOR COMPLETE ENG DATA SEE  
 ORIGINAL DEDICATION PLAT IN  
 BOOK 33, PAGE 95 OF RECORDS.

\*FOR TAX PURPOSES ONLY\*