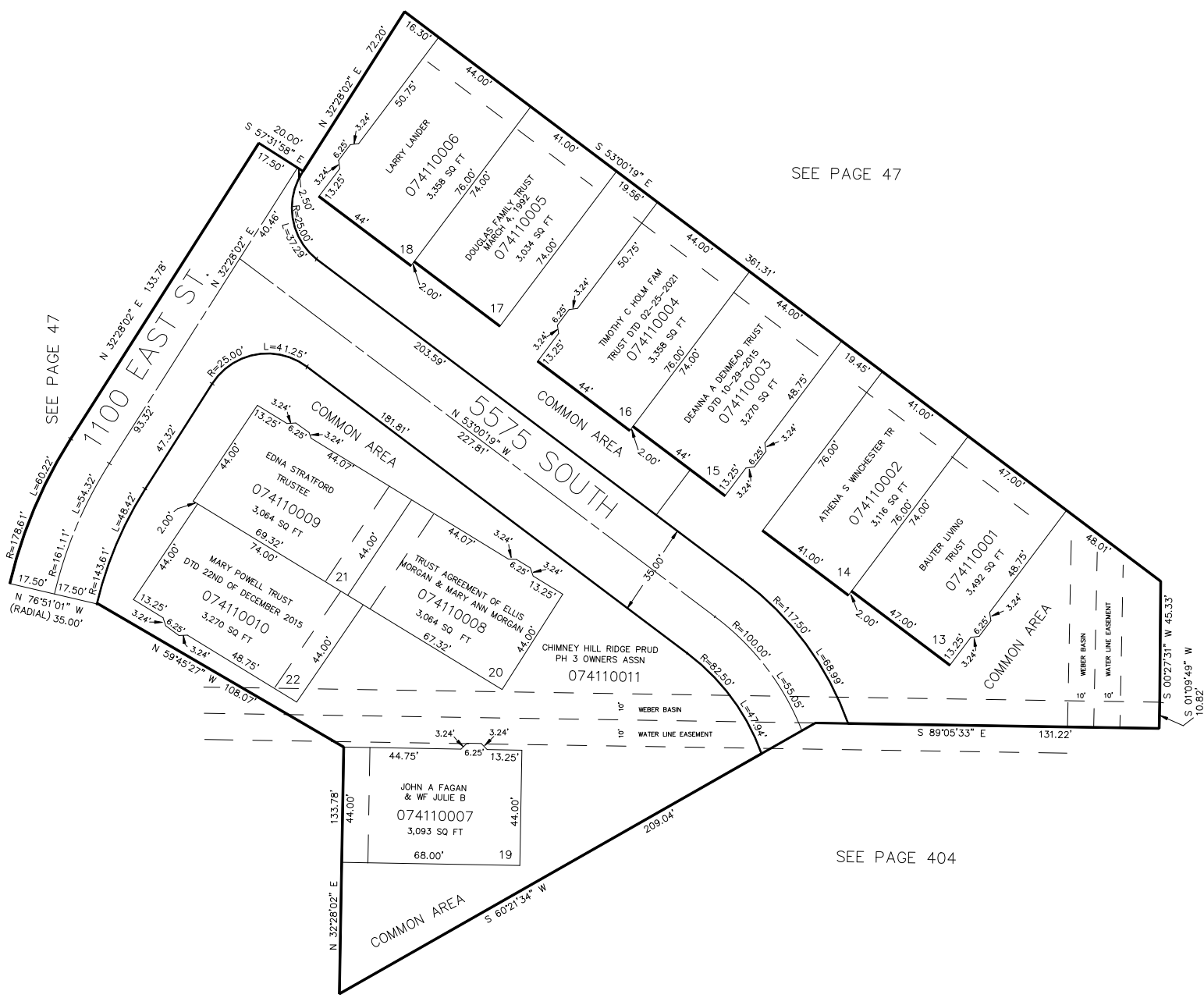


PART OF THE NE.1/4, SEC. 21, T.5N., R.1W., &  
 PART OF THE SE.1/4, SEC. 16, T.5N., R.1W., S.L.B. & M.  
**CHIMNEY HILL RIDGE PRUD, PHASE III**

TAXING UNIT: 27

IN SOUTH OGDEN CITY

SCALE 1" = 30'



SEE PAGE 47

SEE PAGE 404

10' WEBER BASIN WATER LINE EASEMENTS  
 AS INDICATED BY DASHED LINES.  
 ALSO, 10' SUBDIVISION IRRIGATION EASEMENTS  
 AT ENDS OF CONDOMINIUM UNITS AS SHOWN  
 BY DASHED LINES.

FOR COMPLETE ENG DATA SEE  
 ORIGINAL DEDICATION PLAT IN  
 BOOK 34, PAGE 80 OF RECORDS.

\*FOR TAX PURPOSES ONLY\*

KBR 11-92