

PART OF THE NW.1/4, OF SEC. 14 & PART OF THE NE.1/4 OF SEC. 15, .5N., R.1W., S.L.B. & M.

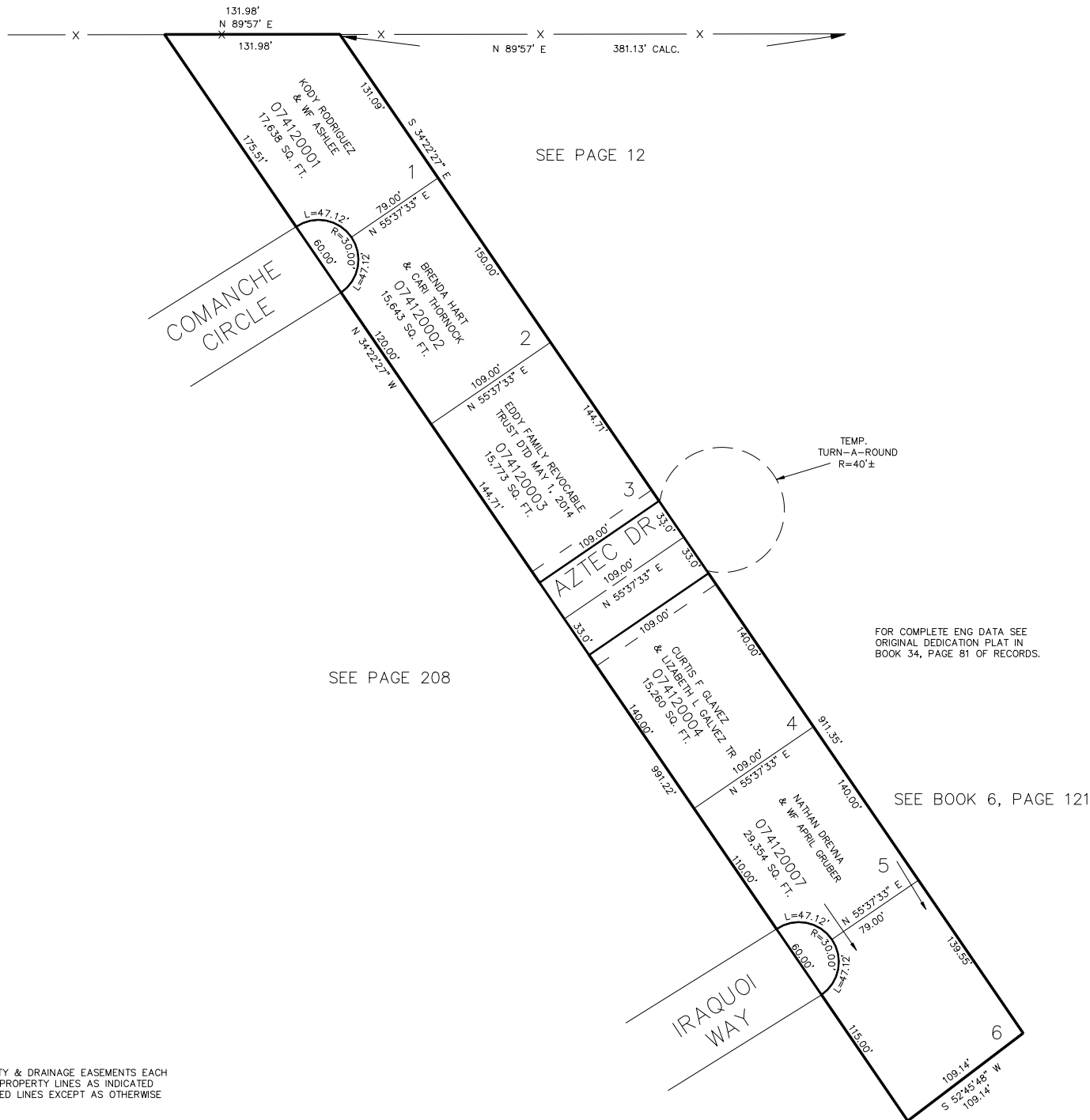
HIDDEN SHADOW ESTATES NO. 1

IN OGDEN CITY

TAXING UNIT: 25

SEE PAGE 12

SCALE 1" = 60'



10' UTILITY & DRAINAGE EASEMENTS EACH
SIDE OF PROPERTY LINES AS INDICATED
BY DASHED LINES EXCEPT AS OTHERWISE
SHOWN.

FOR TAX PURPOSES ONLY

REV. JPS 2-95
KBR 11-92