

PART OF THE SE 1/4, SEC. 16, T.5N., R.1W., S.L.B. & M.

415

PARKVIEW SUBDIVISION

IN SOUTH OGDEN CITY

TAXING UNIT: 27

SCALE 1" = 50'

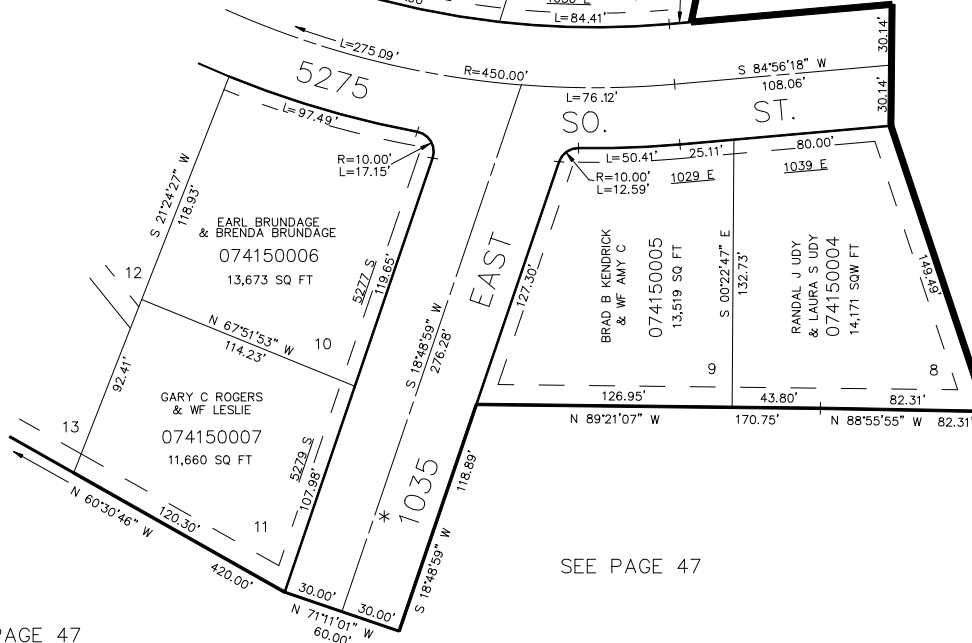
NOTE: SEE DEDICATION PLAT FOR
ALLOWABLE BUILDING AREAS,
SETBACK REQUIREMENTS

SEE PAGE 416

SEE PAGE 47

(SEE 070470095)

GLASMAN PARK
SUBDIVISION
SEE PG. 778



SEE PAGE 47

SEE PAGE 47

10' UTILITY EASEMENTS ON REAR & SIDES
OF LOTS; 7' EASEMENTS ALONG FRONTS OF
LOTS AS INDICATED BY DASHED LINES.
ALL EASEMENTS TO BE USED FOR ALL
PUBLIC UTILITIES.

* STREET NAME CHANGE
1729-2969
8-SEP-94

FOR COMPLETE ENG DATA SEE
ORIGINAL DEDICATION PLAT IN
BOOK 34, PAGE 94 OF RECORDS.

FOR TAX PURPOSES ONLY

JAB 12-92